

À des fins de recherche uniquement

Anticorps Polyclonal de lapin anti-CTHRC1



Numéro de catalogue: 16534-1-AP

Phare

22 Publications

Informations de base

Numéro de catalogue:

16534-1-AP

Taille:

150ul, Concentration: 500 µg/ml by Nanodrop;

Hôte:

Lapin

Isotype:

IgG

Immunogen Catalog Number:

AG9812

Numéro d'acquisition GenBank:

BC014245

Identification du gène (NCBI):

115908

Nom complet:

collagen triple helix repeat containing 1

MW calculé

243 aa, 26 kDa

MW observés:

30 kDa

Méthode de purification:

Purification par affinité contre l'antigène

Dilutions recommandées:

WB 1:500-1:3000

IP 0.5-4.0 ug for IP and 1:500-1:1000 for WB

IF 1:50-1:500

Applications

Applications testées:

IF, IP, WB, ELISA

Demandes citées:

IF, IHC, WB

Spécificité de l'espèce:

Humain, rat, souris

Espèces citées:

Humain, rat, souris

Contrôles positifs:

WB : cellules A375, cellules HEK-293, cellules Jurkat, tissu cérébral de souris, tissu pulmonaire de rat, tissu pulmonaire de souris

IP : cellules A375,

IF : cellules A375,

Informations générales

Collagen triple helix repeat-containing protein 1 (CTHRC1), also known protein NMTC1, is a glycosylated secreted protein. CTHRC1 was identified as a novel molecular in injured and diseased arteries where it may contribute to vascular remodeling by limiting collagen matrix deposition and promoting cell migration (PMID: 15618538). It has been reported that CTHRC1 is a positive regulator of osteoblastic bone formation (PMID: 18779865). Besides, studies reveal that CTHRC1 expression is implicated in various malignancies, including hepatocellular carcinoma, gastric carcinoma, colon cancer, and lung cancer (PMID: 23922981; 24504172; 24746208; 25139095).

Publications notables

Autrice	Pubmed ID	Journal	Application
Huifang Zhou	31576140	Onco Targets Ther	IHC
Biyi Guo	29021002	J Ovarian Res	WB, IHC
Lu-Ying Li	31119444	Clin Exp Metastasis	WB

Stockage

Stockage:

Stocker à -20°C. Stable pendant un an après l'expédition.

Tampon de stockage:

PBS avec azoture de sodium à 0,02 % et glycérol à 50 % pH 7,3

L'aliquotage n'est pas nécessaire pour le stockage à -20C

*** Les 20ul contiennent 0,1% de BSA.

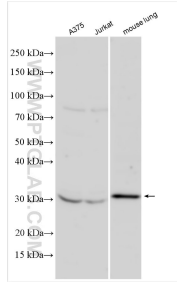
For technical support and original validation data for this product please contact:

T: 1 (888) 4PTGLAB (1-888-478-4522) (toll free in USA), or 1(312) 455-8498 (outside USA)

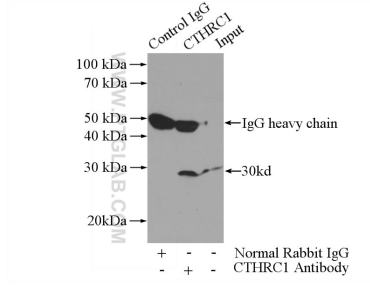
E: proteintech@ptglab.com
W: ptglab.com

This product is exclusively available under Proteintech Group brand and is not available to purchase from any other manufacturer.

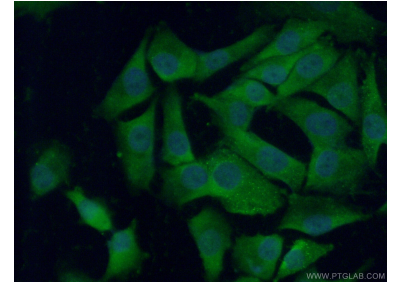
Données de validation sélectionnées



Various lysates were subjected to SDS PAGE followed by western blot with 16534-1-AP (CTHRC1 antibody) at dilution of 1:1500 incubated at room temperature for 1.5 hours.



IP Result of anti-CTHRC1 (IP:16534-1-AP, 3ug; Detection:16534-1-AP 1:500) with A375 cells lysate 3600ug.



Immunofluorescent analysis of (-20°C Ethanol) fixed A375 cells using 16534-1-AP (CTHRC1 antibody) at dilution of 1:50 and Alexa Fluor 488-conjugated AffiniPure Goat Anti-Rabbit IgG(H+L).