

À des fins de recherche uniquement

Anticorps Polyclonal de lapin anti-SERPINA7/TBG



Numéro de catalogue: 16536-1-AP

Informations de base

Numéro de catalogue: 16536-1-AP	Numéro d'acquisition GenBank: BC020747	Méthode de purification: Purification par affinité contre l'antigène
Taille: 150ul , Concentration: 200 µg/ml by Nanodrop and 180 µg/ml by Bradford method using BSA as the standard;	Identification du gène (NCBI): 6906	Dilutions recommandées: WB 1:1000-1:4000
Hôte: Lapin	Nom complet: serpin peptidase inhibitor, clade A (alpha-1 antiproteinase, antitrypsin), member 7	
Isotype: IgG	MW calculé 415 aa, 46 kDa	
Immunogen Catalog Number: AG9823	MW observés: 54 kDa	

Applications

Applications testées: WB, ELISA	Contrôles positifs: WB : plasma humain, urine humaine
Spécificité de l'espèce: Humain	

Informations générales

SERPINA7, also known as Thyroxine-binding globulin (TBG), is a 54 kDa acidic glycoprotein, consisting of a single polypeptide chain of 395 amino acids and four oligosaccharide chains. It is one of the major serum transport proteins of thyroid hormones (THs). Although high amounts of albumin are found in serum, TBG has a greater affinity for thyroxine (T4). Mutations in this gene result in TGB deficiency, which has been classified as partial deficiency, complete deficiency, and excess, based on the level of serum TBG.

Stockage

Stockage:
Stocker à -20°C. Stable pendant un an après l'expédition.
Tampon de stockage:
PBS avec azoture de sodium à 0,02 % et glycérol à 50 % pH 7,3
L'aliquotage n'est pas nécessaire pour le stockage à -20C

*** Les 20ul contiennent 0,1% de BSA.

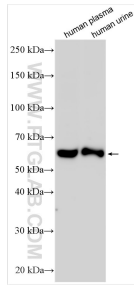
For technical support and original validation data for this product please contact:

T: 1 (888) 4PTGLAB (1-888-478-4522) (toll free in USA), or 1(312) 455-8498 (outside USA)

E: proteintech@ptglab.com
W: ptglab.com

This product is exclusively available under Proteintech Group brand and is not available to purchase from any other manufacturer.

Données de validation sélectionnées



Various lysates were subjected to SDS PAGE followed by western blot with 16536-1-AP (SERPINA7 antibody) at dilution of 1:2000 incubated at room temperature for 1.5 hours.