

À des fins de recherche uniquement

Anticorps Polyclonal de lapin anti-CCKBR-specific



Numéro de catalogue: 16549-1-AP

2 Publications

Informations de base

Numéro de catalogue:
16549-1-AP

Taille:
150ul, Concentration: 300 µg/ml by Nanodrop and 233 µg/ml by Bradford method using BSA as the standard;

Hôte:
Lapin

Isotype:
IgG

Numéro d'acquisition GenBank:
NM_176875

Identification du gène (NCBI):
887

Nom complet:
cholecystokinin B receptor

MW calculé
56 kDa

MW observés:
64 kDa, 50 kDa

Méthode de purification:
Purification par affinité contre l'antigène

Dilutions recommandées:
WB 1:500-1:1000
IF 1:10-1:100

Applications

Applications testées:
IF, WB, ELISA

Demandes citées:
IF, IHC, WB

Spécificité de l'espèce:
Humain

Espèces citées:
Humain

Contrôles positifs:

WB : cellules BxPC-3, cellules SGC-7901, tissu d'estomac humain

IF : cellules BxPC-3,

Informations générales

The cholecystokinin B receptor (CCKBR) is a G-protein coupled receptor for gastrin and cholecystokinin (CCK), regulatory peptides of the brain and gastrointestinal tract. This protein is a type B gastrin receptor, which has a high affinity for both sulfated and nonsulfated CCK analogs and is found principally in the central nervous system and the gastrointestinal tract. A misspliced transcript variant including an intron has been observed in cells from colorectal and pancreatic tumors.

Publications notables

| Autrice | Pubmed ID | Journal | Application |
|-------------|-----------|-------------------------|-------------|
| Jiang Chang | 33998814 | Mol Pharm | WB, IHC |
| Jiang Chang | 32488497 | J Cancer Res Clin Oncol | IF |

Stockage

Stockage:

Stocker à -20°C. Stable pendant un an après l'expédition.

Tampon de stockage:

PBS avec azoture de sodium à 0,02 % et glycérol à 50 % pH 7,3

L'aliquotage n'est pas nécessaire pour le stockage à -20C

*** Les 20ul contiennent 0,1% de BSA.

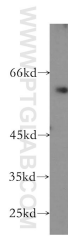
For technical support and original validation data for this product please contact:

T: 1 (888) 4PTGLAB (1-888-478-4522) (toll free in USA), or 1(312) 455-8498 (outside USA)

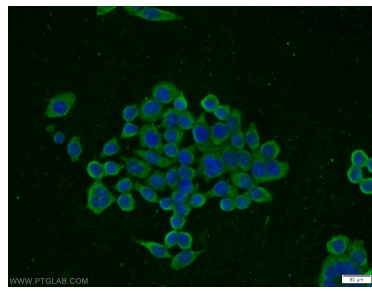
E: proteintech@ptglab.com
W: ptglab.com

This product is exclusively available under Proteintech Group brand and is not available to purchase from any other manufacturer.

Données de validation sélectionnées



BxPC-3 cells were subjected to SDS PAGE followed by western blot with 16549-1-AP (CCKBR-specific antibody) at dilution of 1:300 incubated at room temperature for 1.5 hours.



Immunofluorescent analysis of BxPC-3 cells using 16549-1-AP (CCKBR-specific antibody) at dilution of 1:25 and Alexa Fluor 488-conjugated AffiniPure Goat Anti-Rabbit IgG(H+L).