

À des fins de recherche uniquement

Anticorps Polyclonal de lapin anti-SMPDL3B



Numéro de catalogue: 16552-1-AP

Phare

4 Publications

Informations de base

Numéro de catalogue: 16552-1-AP	Numéro d'acquisition GenBank: BC014444	Méthode de purification: Purification par affinité contre l'antigène
Taille: 150ul, Concentration: 600 µg/ml by Nanodrop and 333 µg/ml by Bradford method using BSA as the standard;	Identification du gène (NCBI): 27293	Dilutions recommandées: WB 1:500-1:2000 IHC 1:250-1:1000
Hôte: Lapin	Nom complet: sphingomyelin phosphodiesterase, acid-like 3B	
Isotype: IgG	MW calculé 373aa,42 kDa; 455aa,51 kDa	
Immunogen Catalog Number: AG9535	MW observés: 42 kDa, 50-65 kDa	

Applications

Applications testées:

IHC, WB, ELISA

Demandes citées:

IF, IHC, WB

Spécificité de l'espèce:

Humain, rat, souris

Espèces citées:

Humain, porc, rat, singe, souris

Remarque-IHC: il est suggéré de démasquer l'antigène avec un tampon de TE buffer pH 9,0; (*) A défaut, 'le démasquage de l'antigène peut être effectué avec un tampon citrate pH 6,0.

Contrôles positifs:

WB : cellules COLO 320, cellules HEK-293

IHC : tissu rénal humain, tissu de cancer du côlon humain

Informations générales

SMPDL3B is lipid-modulating phosphodiesterase. Active on the surface of macrophages and dendritic cells and strongly influences macrophage lipid composition and membrane fluidity. SMPDL3B acts as a negative regulator of Toll-like receptor signaling. It lacks activity with phosphocholine-containing lipids, but can cleave CDP-choline, and can release phosphate from ATP and ADP in vitro (PMID: 26095358). SMPDL3B can be detected 60-70 kDa by N-glycosylation modification (PMID: 26095358, PMID: 31217420).

Publications notables

Autrice	Pubmed ID	Journal	Application
Taesik Gwag	33294831	JHEP Rep	WB
Xin Li	29923306	Basic Clin Pharmacol Toxicol	WB,IHC
Huiqing Qu	34504869	Front Mol Biosci	WB

Stockage

Stockage:

Stocker à -20°C. Stable pendant un an après l'expédition.

Tampon de stockage:

PBS avec azoture de sodium à 0,02 % et glycérol à 50 % pH 7,3

L'aliquotage n'est pas nécessaire pour le stockage à -20C

*** Les 20ul contiennent 0,1% de BSA.

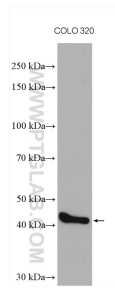
For technical support and original validation data for this product please contact:

T: 1 (888) 4PTGLAB (1-888-478-4522) (toll free in USA), or 1(312) 455-8498 (outside USA)

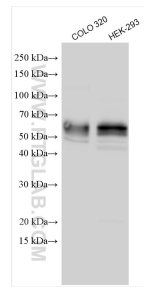
E: proteintech@ptglab.com
W: ptglab.com

This product is exclusively available under Proteintech Group brand and is not available to purchase from any other manufacturer.

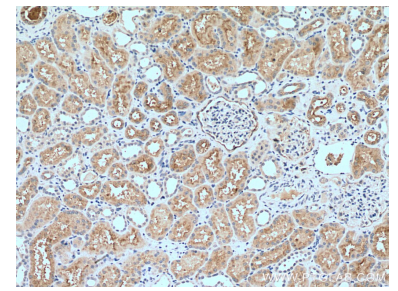
Données de validation sélectionnées



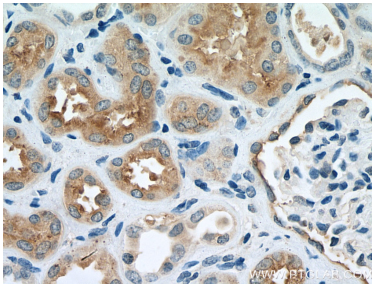
COLO 320 cells lysates were subjected to SDS PAGE followed by western blot with 16552-1-AP (SMPDL3B antibody) at dilution of 1:1500 incubated at room temperature for 1.5 hours.



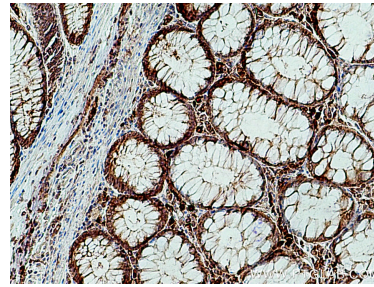
Various lysates were subjected to SDS PAGE followed by western blot with 16552-1-AP (SMPDL3B antibody) at dilution of 1:1000 incubated at room temperature for 1.5 hours.



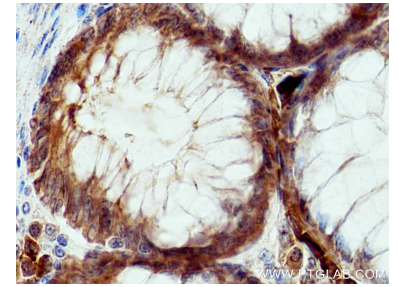
Immunohistochemical analysis of paraffin-embedded human kidney tissue slide using 16552-1-AP (SMPDL3B antibody) at dilution of 1:500 (under 10x lens). Heat mediated antigen retrieval with Tris-EDTA buffer (pH 9.0).



Immunohistochemical analysis of paraffin-embedded human kidney tissue slide using 16552-1-AP (SMPDL3B antibody) at dilution of 1:500 (under 40x lens). Heat mediated antigen retrieval with Tris-EDTA buffer (pH 9.0).



Immunohistochemical analysis of paraffin-embedded human colon cancer tissue slide using 16552-1-AP (SMPDL3B antibody) at dilution of 1:200 (under 10x lens). Heat mediated antigen retrieval with Tris-EDTA buffer (pH 9.0).



Immunohistochemical analysis of paraffin-embedded human colon cancer tissue slide using 16552-1-AP (SMPDL3B antibody) at dilution of 1:200 (under 40x lens). Heat mediated antigen retrieval with Tris-EDTA buffer (pH 9.0).