

À des fins de recherche uniquement

# Anticorps Polyclonal de lapin anti-Fetuin-A



Numéro de catalogue: 16571-1-AP

4 Publications

## Informations de base

Numéro de catalogue:

16571-1-AP

Taille:

150ul, Concentration: 600 µg/ml by Nanodrop and 260 µg/ml by Bradford method using BSA as the standard;

Hôte:

Lapin

Isotype:

IgG

Immunogen Catalog Number:

AG9853

Numéro d'acquisition GenBank:

BC048198

Identification du gène (NCBI):

197

Nom complet:

alpha-2-HS-glycoprotein

MW calculé

367 aa, 39 kDa

MW observés:

58 kDa

Méthode de purification:

Purification par affinité contre l'antigène

Dilutions recommandées:

WB 1:500-1:1000

IHC 1:50-1:500

## Applications

Applications testées:

IHC, WB, ELISA

Demandes citées:

IHC, WB

Spécificité de l'espèce:

Humain

Espèces citées:

Humain, Plasmodium falciparum

**Remarque-IHC: il est suggéré de démasquer l'antigène avec un tampon de TE buffer pH 9,0; (\*) A défaut, le démasquage de l'antigène peut être effectué avec un tampon citrate pH 6,0.**

Contrôles positifs:

WB : tissu hépatique humain, tissu cardiaque humain

IHC : tissu hépatique humain,

## Informations générales

Fetuin-A, also named as Alpha2-HS glycoprotein (AHSG), is a member of cystatin superfamily of protease inhibitors. It is a highly expressed glycoprotein in various fetal tissues whereas it is mainly expressed by the liver in adults. Fetuin A, an extracellular inhibitor of transforming growth factor  $\beta$ , is a profibrogenic stimulus in liver disease. Circulating fetuin-A may be a beneficial serum biomarker in the detection of liver and vascular fibrosis progression in patients with non-alcoholic fatty liver disease. It is also involved in several functions, such as endocytosis, brain development and the formation of bone tissue. Fetuin-A exerts its effects on the cardiovascular system by two different mechanisms. On the one hand it inhibits insulin signaling and induces insulin resistance contributing to the onset of atherosclerosis and on the other hand it inhibits calcium deposition and protects from vascular calcification.

## Publications notables

| Autrice    | Pubmed ID | Journal                  | Application |
|------------|-----------|--------------------------|-------------|
| Yufei Dong | 35746836  | Bioengineered            | IHC         |
| Xiao Lin   | 33585452  | Front Cell Dev Biol      | WB          |
| J Song     | 33892138  | Osteoarthritis Cartilage | IHC, WB     |

## Stockage

Stockage:

Stocker à -20°C. Stable pendant un an après l'expédition.

Tampon de stockage:

PBS avec azote de sodium à 0,02 % et glycérol à 50 % pH 7,3

L'aliquotage n'est pas nécessaire pour le stockage à -20C

\*\*\* Les 20ul contiennent 0,1% de BSA.

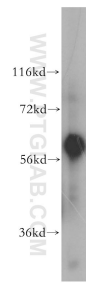
For technical support and original validation data for this product please contact:

T: 1 (888) 4PTGLAB (1-888-478-4522) (toll free in USA), or 1(312) 455-8498 (outside USA)

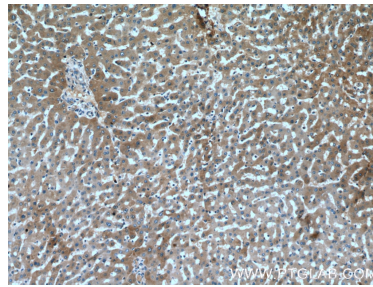
E: proteintech@ptglab.com  
W: ptglab.com

This product is exclusively available under Proteintech Group brand and is not available to purchase from any other manufacturer.

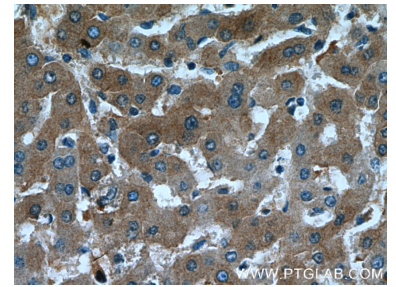
## Données de validation sélectionnées



human liver tissue were subjected to SDS PAGE followed by western blot with 16571-1-AP (Fetuin-A antibody) at dilution of 1:500 incubated at room temperature for 1.5 hours.



Immunohistochemical analysis of paraffin-embedded human liver tissue slide using 16571-1-AP (Fetuin-A antibody at dilution of 1:200 (under 10x lens).



Immunohistochemical analysis of paraffin-embedded human liver tissue slide using 16571-1-AP (Fetuin-A antibody at dilution of 1:200 (under 40x lens).