

À des fins de recherche uniquement

# Anticorps Polyclonal de lapin anti-CFHR3



Numéro de catalogue: 16583-1-AP

6 Publications

## Informations de base

Numéro de catalogue:

16583-1-AP

Taille:

150ul, Concentration: 500 µg/ml by Nanodrop and 280 µg/ml by Bradford method using BSA as the standard;

Hôte:

Lapin

Isotype:

IgG

Immunogen Catalog Number:

AG9963

Numéro d'acquisition GenBank:

BC058009

Identification du gène (NCBI):

10878

Nom complet:

complement factor H-related 3

MW calculé

330 aa, 37 kDa

MW observés:

45-56 kDa

Méthode de purification:

Purification par affinité contre l'antigène

Dilutions recommandées:

WB 1:1000-1:4000

IP 0.5-4.0 ug for IP and 1:200-1:1000 for WB

IHC 1:50-1:500

## Applications

Applications testées:

IHC, IP, WB, ELISA

Demandes citées:

IF, IHC, WB

Spécificité de l'espèce:

Humain, rat, souris

Espèces citées:

Humain

**Remarque-IHC: il est suggéré de démasquer l'antigène avec un tampon de TE buffer pH 9,0; (\*) A défaut, 'le démasquage de l'antigène peut être effectué avec un tampon citrate pH 6,0.**

Contrôles positifs:

WB : tissu hépatique de souris, tissu cardiaque humain, tissu hépatique de rat

IP : cellules HepG2,

IHC : tissu hépatique humain,

## Informations générales

CFHR3, also named as DOWN16, belongs to the complement factor H-related protein family. Expressed by the liver and secreted in plasma, human CFHR3 is composed of five short consensus repeats (SCRs), and it also has a 19-amino acid signal peptide and four N-linked glycosylation sites. It may be involved in complement regulation. Deletion of CFHR1 and CFHR3 genes was found to be associated with decreased risk of age-related macular degeneration (AMD), and with an increased risk of atypical hemolytic-uremic syndrome (aHUS).

## Publications notables

Autrice	Pubmed ID	Journal	Application
Zhirui Zeng	35549979	Bioengineered	WB,IHC
Yoko Yoshida	25951460	PLoS One	WB
Swati Arya	29580721	Exp Eye Res	IF

## Stockage

Stockage:

Stocker à -20°C. Stable pendant un an après l'expédition.

Tampon de stockage:

PBS avec azoture de sodium à 0,02 % et glycérol à 50 % pH 7,3

L'aliquotage n'est pas nécessaire pour le stockage à -20C

\*\*\* Les 20ul contiennent 0,1% de BSA.

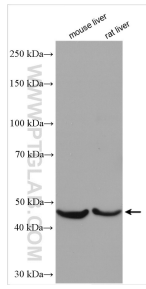
For technical support and original validation data for this product please contact:

T: 1 (888) 4PTGLAB (1-888-478-4522) (toll free in USA), or 1(312) 455-8498 (outside USA)

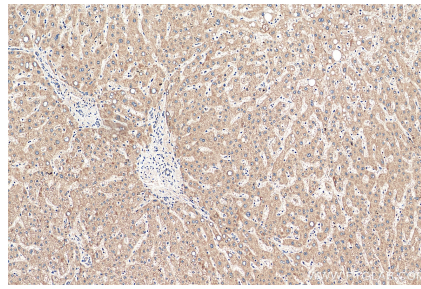
E: proteintech@ptglab.com  
W: ptglab.com

This product is exclusively available under Proteintech Group brand and is not available to purchase from any other manufacturer.

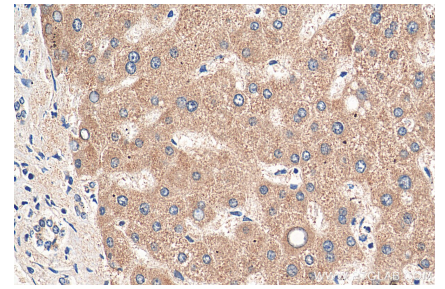
## Données de validation sélectionnées



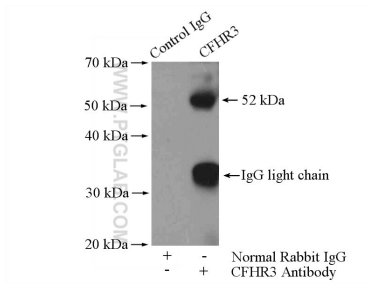
Various lysates were subjected to SDS PAGE followed by western blot with 16583-1-AP (CFHR3 antibody) at dilution of 1:2000 incubated at room temperature for 1.5 hours.



Immunohistochemical analysis of paraffin-embedded human liver tissue slide using 16583-1-AP (CFHR3 antibody) at dilution of 1:200 (under 10x lens). Heat mediated antigen retrieval with Tris-EDTA buffer (pH 9.0).



Immunohistochemical analysis of paraffin-embedded human liver tissue slide using 16583-1-AP (CFHR3 antibody) at dilution of 1:200 (under 40x lens). Heat mediated antigen retrieval with Tris-EDTA buffer (pH 9.0).



IP Result of anti-CFHR3 (IP:16583-1-AP, 4ug; Detection:16583-1-AP 1:300) with HepG2 cells lysate 2400ug.