

À des fins de recherche uniquement

Anticorps Polyclonal de lapin anti-SDR39U1



Numéro de catalogue: 16585-1-AP

Informations de base

Numéro de catalogue: 16585-1-AP	Numéro d'acquisition GenBank: BC000989	Méthode de purification: Purification par affinité contre l'antigène
Taille: 150ul , Concentration: 133 µg/ml by Bradford method using BSA as the standard;	Identification du gène (NCBI): 56948	Dilutions recommandées: WB 1:500-1:1000
Hôte: Lapin	Nom complet: short chain dehydrogenase/reductase family 39U, member 1	
Isotype: IgG	MW calculé: 35 kDa	
Immunogen Catalog Number: AG9973	MW observés: 35 kDa	

Applications

Applications testées: WB, ELISA	Contrôles positifs: WB : tissu de glande surrénale humain,
Spécificité de l'espèce: Humain, rat, souris	

Informations générales

SDR39U1 (Epimerase family protein SDR39U1) is also named as C14orf124, HCDI and belongs to the sugar epimerase family and SDR39U1 subfamily. It shares more sequence similarity with the sugar epimerase family than with the short-chain dehydrogenases/reductases (SDR) family. It has 3 isoforms produced by alternative splicing with the molecular weight of 35 kDa, 31 kDa and 21 kDa.

Stockage

Stockage:
Stocker à -20°C. Stable pendant un an après l'expédition.
Tampon de stockage:
PBS avec azoture de sodium à 0,02 % et glycérol à 50 % pH 7,3
L'aliquotage n'est pas nécessaire pour le stockage à -20°C

*** Les 20ul contiennent 0,1% de BSA.

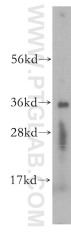
For technical support and original validation data for this product please contact:

T: 1 (888) 4PTGLAB (1-888-478-4522) (toll free in USA), or 1(312) 455-8498 (outside USA)

E: proteintech@ptglab.com
W: ptglab.com

This product is exclusively available under Proteintech Group brand and is not available to purchase from any other manufacturer.

Données de validation sélectionnées



human adrenal gland tissue were subjected to SDS PAGE followed by western blot with 16585-1-AP (SDR39U1 antibody) at dilution of 1:500 incubated at room temperature for 1.5 hours.