

À des fins de recherche uniquement

Anticorps Polyclonal de lapin anti-PGCP



Numéro de catalogue: 16601-1-AP

2 Publications

Informations de base

Numéro de catalogue:

16601-1-AP

Taille:

150ul, Concentration: 350 µg/ml by Nanodrop and 240 µg/ml by Bradford method using BSA as the standard;

Hôte:

Lapin

Isotype:

IgG

Immunogen Catalog Number:

AG9770

Numéro d'acquisition GenBank:

BC020689

Identification du gène (NCBI):

10404

Nom complet:

plasma glutamate carboxypeptidase

MW calculé

472 aa, 52 kDa

MW observés:

65-70 kDa

Méthode de purification:

Purification par affinité contre l'antigène

Dilutions recommandées:

WB 1:500-1:1000

IP 0.5-4.0 ug for IP and 1:500-1:1000 for WB

IF 1:20-1:200

Applications

Applications testées:

IF, IP, WB, ELISA

Demandes citées:

WB

Spécificité de l'espèce:

Humain, souris

Espèces citées:

Humain, rat

Contrôles positifs:

WB : cellules L02, tissu placentaire humain, tissu plasmatique humain, tissu rénal de souris

IP : tissu rénal de souris,

IF : cellules L02,

Informations générales

PGCP(plasma glutamate carboxypeptidase) is also named as LCH1,CPQ and belongs to the peptidase M28 family. It may play an important role in the hydrolysis of circulating peptides. It catalyzes more efficiently the hydrolysis of dipeptides with unsubstituted terminals into amino acids. It is a proteinase that acts on the unsubstituted N- and C-termini of dipeptides. It has been suggested that this PGCP is involved in the release of thyroxine(PMID:20951214). Human PGCP is a metallopeptidase with five potential glycosylation sites, whose activity depends on dimerization and it can be detected a band of 65-72kd in FRTL-5 cells which is pro-PGCP(PMID:22127294). It can be N-glycosylated(PMID:10206990). It has the pro-form of 60-65 kDa and mature form of 55 kDa(PMID:20951214).

Publications notables

Autrice	Pubmed ID	Journal	Application
Mengyan Hu	37402721	Nat Commun	WB
Tiemei Li	37246283	Adv Sci (Weinh)	WB

Stockage

Stockage:

Stocker à -20°C. Stable pendant un an après l'expédition.

Tampon de stockage:

PBS avec azoture de sodium à 0,02 % et glycérol à 50 % pH 7,3

L'aliquotage n'est pas nécessaire pour le stockage à -20C

*** Les 20ul contiennent 0,1% de BSA.

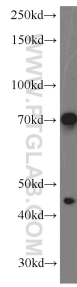
For technical support and original validation data for this product please contact:

T: 1 (888) 4PTGLAB (1-888-478-4522) (toll free in USA), or 1(312) 455-8498 (outside USA)

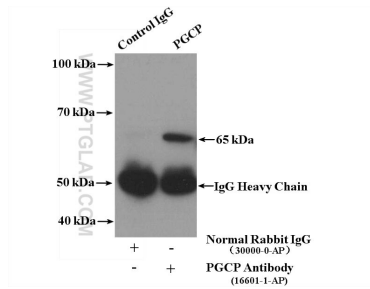
E: proteintech@ptglab.com
W: ptglab.com

This product is exclusively available under Proteintech Group brand and is not available to purchase from any other manufacturer.

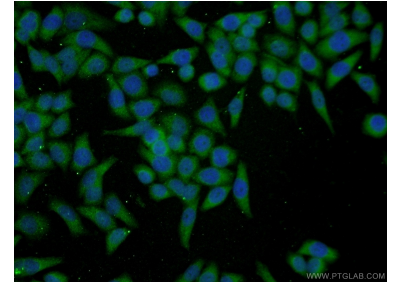
Données de validation sélectionnées



L02 cells were subjected to SDS PAGE followed by western blot with 16601-1-AP (PGCP antibody) at dilution of 1:600 incubated at room temperature for 1.5 hours.



IP Result of anti-PGCP (IP:16601-1-AP, 4ug; Detection:16601-1-AP 1:500) with mouse kidney tissue lysate 4000ug.



Immunofluorescent analysis of L02 cells using 16601-1-AP (PGCP antibody) at dilution of 1:50 and Alexa Fluor 488-conjugated AffiniPure Goat Anti-Rabbit IgG(H+L).