

À des fins de recherche uniquement

Anticorps Polyclonal de lapin anti-ME1



Numéro de catalogue: 16619-1-AP

Phare

18 Publications

Informations de base

Numéro de catalogue:

16619-1-AP

Taille:

150ul, Concentration: 550 µg/ml by Nanodrop;

Hôte:

Lapin

Isotype:

IgG

Immunogen Catalog Number:

AG9916

Numéro d'acquisition GenBank:

BC025246

Identification du gène (NCBI):

4199

Nom complet:

malic enzyme 1, NADP(+)-dependent, cytosolic

MW calculé

572 aa, 64 kDa

MW observés:

55-64 kDa

Méthode de purification:

Purification par affinité contre l'antigène

Dilutions recommandées:

WB 1:500-1:2000

IP 0.5-4.0 µg for IP and 1:500-1:1000 for WB

IHC 1:20-1:200

Applications

Applications testées:

IHC, IP, WB, ELISA

Demandes citées:

IF, IHC, WB

Spécificité de l'espèce:

Humain, rat, souris

Espèces citées:

Humain, souris

Contrôles positifs:

WB : tissu hépatique de souris, cellules HeLa, cellules MCF-7, tissu hépatique de rat, tissu placentaire de souris

IP : tissu hépatique de souris,

IHC : tissu hépatique humain, tissu placentaire humain

Remarque-IHC: il est suggéré de démasquer l'antigène avec un tampon de TE buffer pH 9,0; (*) À défaut, le démasquage de l'antigène peut être effectué avec un tampon citrate pH 6,0.

Informations générales

ME1(NADP-dependent malic enzyme) belongs to the malic enzymes family. This malic enzyme catalyzes the reversible oxidative decarboxylation of malate and is a link between the glycolytic pathway and the citric acid cycle. The reaction is L-malate plus NADP(+) to form pyruvate, CO₂, and NADPH. The predicted protein contains 572 amino acids and has a calculated molecular mass of 64.1 kDa.

Publications notables

Autrice	Pubmed ID	Journal	Application
Lorenzo M Fernandes	30250042	Sci Rep	IHC, WB
Lei Ye	33491741	Int J Oncol	WB
Al-Dwairi Ahmed A	23056418	PLoS One	IHC

Stockage

Stockage:

Stocker à -20°C. Stable pendant un an après l'expédition.

Tampon de stockage:

PBS avec azoture de sodium à 0,02 % et glycérol à 50 % pH 7,3

L'aliquotage n'est pas nécessaire pour le stockage à -20C

*** Les 20ul contiennent 0,1% de BSA.

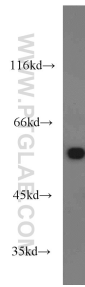
For technical support and original validation data for this product please contact:

T: 1 (888) 4PTGLAB (1-888-478-4522) (toll free in USA), or 1(312) 455-8498 (outside USA)

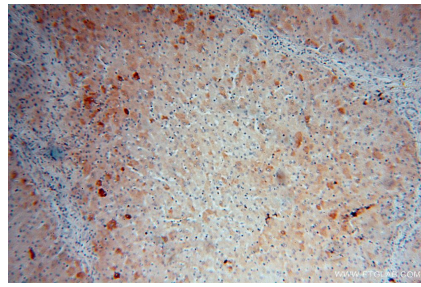
E: proteintech@ptglab.com
W: ptglab.com

This product is exclusively available under Proteintech Group brand and is not available to purchase from any other manufacturer.

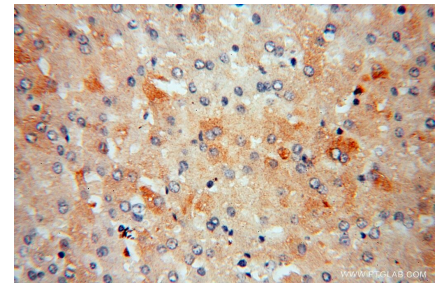
Données de validation sélectionnées



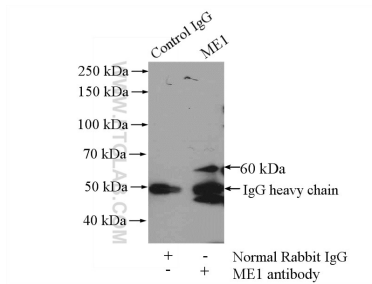
mouse liver tissue were subjected to SDS PAGE followed by western blot with 16619-1-AP (ME1 antibody) at dilution of 1:2000 incubated at room temperature for 1.5 hours.



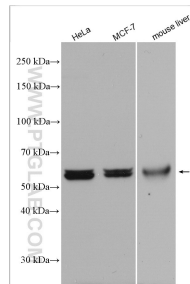
Immunohistochemical analysis of paraffin-embedded human liver using 16619-1-AP (ME1 antibody) at dilution of 1:100 (under 10x lens).



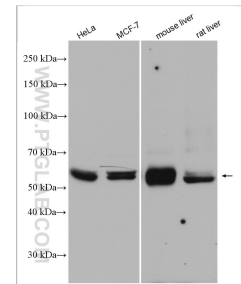
Immunohistochemical analysis of paraffin-embedded human liver using 16619-1-AP (ME1 antibody) at dilution of 1:100 (under 40x lens).



IP Result of anti-ME1 (IP:16619-1-AP, 4ug; Detection:16619-1-AP 1:500) with mouse liver tissue lysate 4000ug.



Various lysates were subjected to SDS PAGE followed by western blot with 16619-1-AP (ME1 antibody) at dilution of 1:4000 incubated at room temperature for 1.5 hours.



Various lysates were subjected to SDS PAGE followed by western blot with 16619-1-AP (ME1 antibody) at dilution of 1:4000 incubated at room temperature for 1.5 hours.