

À des fins de recherche uniquement

Anticorps Polyclonal de lapin anti-GRB10



Numéro de catalogue: 16622-1-AP

Informations de base

Numéro de catalogue: 16622-1-AP	Numéro d'acquisition GenBank: BC024285	Méthode de purification: Purification par affinité contre l'antigène
Taille: 150ul , Concentration: 140 µg/ml by Bradford method using BSA as the standard;	Identification du gène (NCBI): 2887	Dilutions recommandées: WB 1:200-1:1000 IF 1:20-1:200
Hôte: Lapin	Nom complet: growth factor receptor-bound protein 10	
Isotype: IgG	MW calculé 536aa,61 kDa; 594aa,67 kDa	
Immunogen Catalog Number: AG9921	MW observés: 65 kDa	

Applications

Applications testées: IF, WB, ELISA	Contrôles positifs: WB : cellules HepG2, IF : cellules HepG2,
Spécificité de l'espèce: Humain, rat, souris	

Informations générales

Growth factor receptor-bound protein 10 (GRB10) is an adapter protein which modulates coupling of a number of cell surface receptor kinases with specific signaling pathways. GRB10 has three consensus domains including pleckstrin homology (PH) domain, SH2/SH3 domain and Ras-associating domain. By binding to kinases, GRB10 suppresses signals from activated receptors tyrosine kinases, including the ins (INSR) and ins-like growth factor (IGF1R) receptors. It may play a role in mediating ins-stimulated ubiquitination of INSR, leading to proteasomal degradation.

Stockage

Stockage:
Stocker à -20°C. Stable pendant un an après l'expédition.
Tampon de stockage:
PBS avec azoture de sodium à 0,02 % et glycérol à 50 % pH 7,3
L'aliquotage n'est pas nécessaire pour le stockage à -20C

*** Les 20ul contiennent 0,1% de BSA.

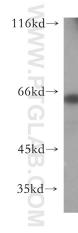
For technical support and original validation data for this product please contact:

T: 1 (888) 4PTGLAB (1-888-478-4522) (toll free in USA), or 1(312) 455-8498 (outside USA)

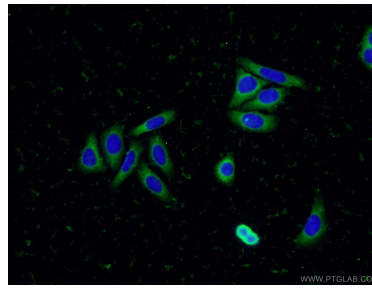
E: proteintech@ptglab.com
W: ptglab.com

This product is exclusively available under Proteintech Group brand and is not available to purchase from any other manufacturer.

Données de validation sélectionnées



HepG2 cells were subjected to SDS PAGE followed by western blot with 16622-1-AP (GRB10 antibody) at dilution of 1:500 incubated at room temperature for 1.5 hours.



Immunofluorescent analysis of (-20°C Ethanol) fixed HepG2 cells using 16622-1-AP (GRB10 antibody) at dilution of 1:50 and Alexa Fluor 488-conjugated AffiniPure Goat Anti-Rabbit IgG(H+L).