

À des fins de recherche uniquement

Anticorps Polyclonal de lapin anti-RTF2



Numéro de catalogue: 16633-1-AP

Phare

1 Publications

Informations de base

Numéro de catalogue:
16633-1-AP

Taille:
150ul, Concentration: 800 µg/ml by Nanodrop and 427 µg/ml by Bradford method using BSA as the standard;

Hôte:
Lapin

Isotype:
IgG

Immunogen Catalog Number:
AG9972

Numéro d'acquisition GenBank:
BC003359

Identification du gène (NCBI):
51507

Nom complet:
chromosome 20 open reading frame
43

MW calculé
34 kDa

MW observés:
35-40 kDa

Méthode de purification:
Purification par affinité contre l'antigène

Dilutions recommandées:
WB 1:1000-1:4000
IP 0.5-4.0 ug for IP and 1:500-1:1000 for WB
IF 1:50-1:500

Applications

Applications testées:
IF, IP, WB, ELISA

Demandes citées:
WB

Spécificité de l'espèce:
Humain, rat, souris

Espèces citées:
Humain

Contrôles positifs:

WB : cellules MCF-7, cellules HeLa

IP : cellules HeLa,

IF : cellules HeLa,

Informations générales

The function of C20orf43 remains largely unknown. Catalog#16633-1-AP is a rabbit polyclonal antibody raised against the full-length of human C20orf43. The MW of this protein is 40 kDa, and this antibody specially recognises the 40 kDa protein.

Publications notables

Autrice	Pubmed ID	Journal	Application
Molly C Kottemann	29290612	Mol Cell	WB

Stockage

Stockage:

Stocker à -20°C. Stable pendant un an après l'expédition.

Tampon de stockage:

PBS avec azoture de sodium à 0,02 % et glycérol à 50 % pH 7,3

L'aliquotage n'est pas nécessaire pour le stockage à -20C

*** Les 20ul contiennent 0,1% de BSA.

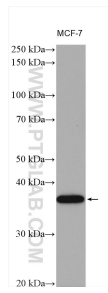
For technical support and original validation data for this product please contact:

T: 1 (888) 4PTGLAB (1-888-478-4522) (toll free in USA), or 1(312) 455-8498 (outside USA)

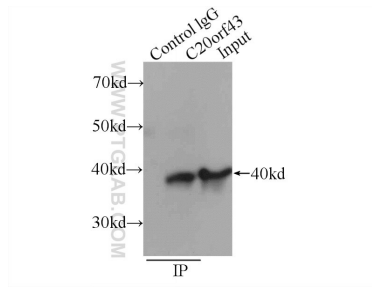
E: proteintech@ptglab.com
W: ptglab.com

This product is exclusively available under Proteintech Group brand and is not available to purchase from any other manufacturer.

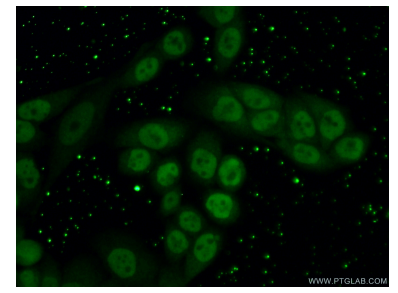
Données de validation sélectionnées



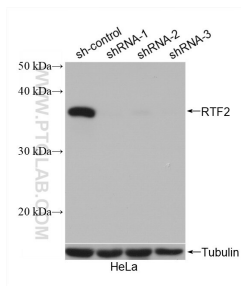
MCF-7 cells were subjected to SDS PAGE followed by western blot with 16633-1-AP (RTF2 antibody) at dilution of 1:2000 incubated at room temperature for 1.5 hours.



IP Result of anti-C20orf43 (IP:16633-1-AP, 3ug; Detection:16633-1-AP 1:500) with HeLa cells lysate 3440ug.



Immunofluorescent analysis of (10% Formaldehyde) fixed HeLa cells using 16633-1-AP (C20orf43 antibody) at dilution of 1:50 and Alexa Fluor 488-conjugated AffiniPure Goat Anti-Rabbit IgG(H+L).



WB result of RTF2 antibody (16633-1-AP; 1:1000; incubated at room temperature for 1.5 hours) with sh-Control and sh-RTF2 transfected HeLa cells.