

À des fins de recherche uniquement

Anticorps Polyclonal de lapin anti-TIMP1



Numéro de catalogue: 16644-1-AP

66 Publications

Informations de base

Numéro de catalogue: 16644-1-AP	Numéro d'acquisition GenBank: BC000866	Méthode de purification: Purification par affinité contre l'antigène
Taille: 150ul , Concentration: 500 µg/ml by Nanodrop;	Identification du gène (NCBI): 7076	Dilutions recommandées: IF 1:200-1:800
Hôte: Lapin	Nom complet: TIMP metalloproteinase inhibitor 1	
Isotype: IgG	MW calculé: 23 kDa	
Immunogen Catalog Number: AG10006	MW observés: 23 kDa	

Applications

Applications testées: IF, WB, ELISA	Contrôles positifs: IF : cellules HT-29,
Demandes citées: IF, IHC	
Spécificité de l'espèce: Humain	
Espèces citées: bovin, Humain, Lapin	

Informations générales

TIMP1 is a member of the family of matrix metalloproteinase inhibitors, which contains four members (TIMP1, TIMP2, TIMP3, and TIMP4). Tissue inhibitors of metalloproteinases (TIMPs) are multifaceted molecules that exhibit properties beyond their classical proteinase inhibitory function. TIMP1 has several MMP-independent functions such as modulation of angiogenesis, promotion of cell proliferation, and inhibition of apoptosis. TIMP1 plays important role in cell cycle regulation and cancer progression. Recently, clinical studies have shown that the aberrant expression of TIMP1 is associated with an unfavorable prognosis in a series of tumors, such as gastric cancer, papillary thyroid carcinoma, cutaneous melanoma and breast cancer. In pregnancy, TIMP1 plays a regulatory role in the process of implantation, particularly the cytotrophoblast invasion of the uterine endometrium. In pregnancy, TIMP1 plays a regulatory role in the process of implantation, particularly the cytotrophoblast invasion of the uterine endometrium.

Publications notables

Autrice	Pubmed ID	Journal	Application
Cheng-Chieh Fang	30217986	Sci Rep	IHC
Xiao-Xiao He	30219235	Biochem Biophys Res Commun	WB
Henrique Bregolin Dias	31509566	PLoS One	WB

Stockage

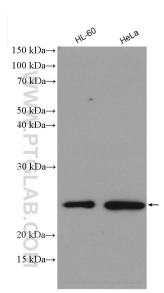
Stockage:
Stocker à -20°C. Stable pendant un an après l'expédition.
Tampon de stockage:
PBS avec azoture de sodium à 0,02 % et glycérol à 50 % pH 7,3
L'aliquotage n'est pas nécessaire pour le stockage à -20C

*** Les 20ul contiennent 0,1% de BSA.

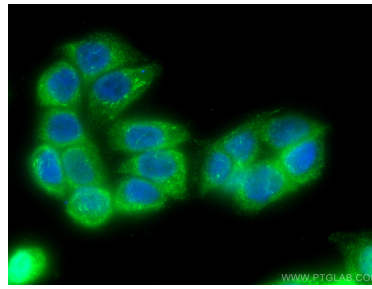
For technical support and original validation data for this product please contact:
T: 1 (888) 4PTGLAB (1-888-478-4522) (toll free in USA), or 1(312) 455-8498 (outside USA)
E: proteintech@ptglab.com
W: ptglab.com

This product is exclusively available under Proteintech Group brand and is not available to purchase from any other manufacturer.

Données de validation sélectionnées



Various lysates were subjected to SDS PAGE followed by western blot with 16644-1-AP (TIMP1 antibody) at dilution of 1:3000 incubated at room temperature for 1.5 hours.



Immunofluorescent analysis of (4% PFA) fixed HT-29 cells using TIMP1 antibody (16644-1-AP) at dilution of 1:400 and CoraLite®488-Conjugated AffiniPure Goat Anti-Rabbit IgG(H+L).