

À des fins de recherche uniquement

Anticorps Polyclonal de lapin anti-ASL



Numéro de catalogue: 16645-1-AP

3 Publications

Informations de base

Numéro de catalogue: 16645-1-AP	Numéro d'acquisition GenBank: BC008195	Méthode de purification: Purification par affinité contre l'antigène
Taille: 150ul , Concentration: 600 µg/ml by Nanodrop;	Identification du gène (NCBI): 435	Dilutions recommandées: WB 1:1000-1:6000 IHC 1:100-1:400
Hôte: Lapin	Nom complet: argininosuccinate lyase	
Isotype: IgG	MW calculé 55 kDa	
Immunogen Catalog Number: AG10007	MW observés: 49 kDa	

Applications

Applications testées:
IHC, WB, ELISA

Demandes citées:
IHC, WB

Spécificité de l'espèce:
Humain, rat, souris

Espèces citées:
Humain, souris

Contrôles positifs:

WB : tissu rénal de souris, tissu hépatique de rat, tissu hépatique de souris, tissu rénal de rat

IHC : tissu de cancer du foie humain,

Remarque-IHC: il est suggéré de démasquer l'antigène avec un tampon de TE buffer pH 9,0; (*) À défaut, le démasquage de l'antigène peut être effectué avec un tampon citrate pH 6,0.

Informations générales

Argininosuccinate lyase (ASL), one of the significant UC enzymes, catalyzes argininosuccinate cleavage to generate arginine and fumarate. Arginine is then catalyzed by arginase to ornithine and polyamines, which are found to promote cancer cell proliferation and growth. Importantly, ASL ectopic expression is closely associated with poor prognosis of colorectal cancer, hepatocellular. ASL is a member of the aspartase/fumarase superfamily. Enzymes of this superfamily share similar tetrameric structure and active site, though the sequence identities between different members are quite low (less than 20%). Members of this superfamily have been recognised as drug targets for microbial infections. ASL is a 464-amino-acid enzyme with a molecular mass of 49.7 kDa. (PMID: 22386318 PMID: 31018905)

Publications notables

Autrice	Pubmed ID	Journal	Application
Yin Cao	30901224	J Proteome Res	WB, IHC
Wenxiang Zhang	32029232	Mol Metab	WB
Jing He	37550284	Cell Discov	WB

Stockage

Stockage:

Stocker à -20°C. Stable pendant un an après l'expédition.

Tampon de stockage:

PBS avec azoture de sodium à 0,02 % et glycérol à 50 % pH 7,3

L'aliquote n'est pas nécessaire pour le stockage à -20°C

*** Les 20ul contiennent 0,1% de BSA.

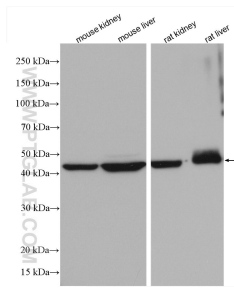
For technical support and original validation data for this product please contact:

T: 1 (888) 4PTGLAB (1-888-478-4522) (toll free in USA), or 1(312) 455-8498 (outside USA)

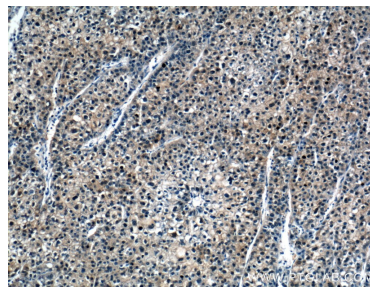
E: proteintech@ptglab.com
W: ptglab.com

This product is exclusively available under Proteintech Group brand and is not available to purchase from any other manufacturer.

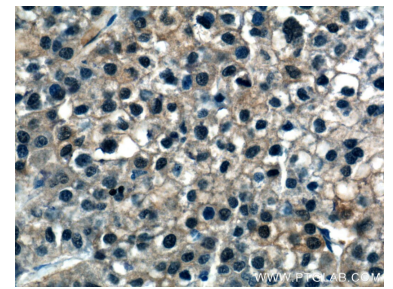
Données de validation sélectionnées



Various lysates were subjected to SDS PAGE followed by western blot with 16645-1-AP (ASL antibody) at dilution of 1:3000 incubated at room temperature for 1.5 hours.



Immunohistochemical analysis of paraffin-embedded human liver cancer tissue slide using 16645-1-AP (ASL Antibody) at dilution of 1:200 (under 10x lens).



Immunohistochemical analysis of paraffin-embedded human liver cancer tissue slide using 16645-1-AP (ASL Antibody) at dilution of 1:200 (under 40x lens).