

À des fins de recherche uniquement

Anticorps Polyclonal de lapin anti-CD163



Numéro de catalogue: 16646-1-AP

Phare

107 Publications

Informations de base

Numéro de catalogue: 16646-1-AP	Numéro d'acquisition GenBank: BC051281	Méthode de purification: Purification par affinité contre l'antigène
Taille: 150ul , Concentration: 600 µg/ml by Nanodrop;	Identification du gène (NCBI): 9332	Dilutions recommandées: WB 1:500-1:1000 IHC 1:1000-1:4000 IF 1:50-1:500
Hôte: Lapin	Nom complet: CD163 molecule	
Isotype: IgG	MW calculé 1156 aa, 125 kDa	
Immunogen Catalog Number: AG10029	MW observés: 130-145 kDa	

Applications

Applications testées:
FC, IF, IHC, WB, ELISA

Demandes citées:
FC, IF, IHC, WB

Spécificité de l'espèce:
Humain, porc, souris

Espèces citées:
Humain, porc, rat, souris

Remarque-IHC: il est suggéré de démasquer l'antigène avec un tampon de TE buffer pH 9,0; (*) À défaut, le démasquage de l'antigène peut être effectué avec un tampon citrate pH 6,0.

Contrôles positifs:

WB : tissu splénique de porc, tissu placentaire humain

IHC : tissu d'amygdalite humaine, tissu hépatique humain, tissu placentaire humain, tissu pulmonaire humain

IF : tissu d'amygdalite humaine, tissu hépatique humain

Informations générales

CD163 is a transmembrane protein which belongs to the scavenger receptor cysteine-rich (SRCR) superfamily. This protein is a scavenger receptor for the hemoglobin-haptoglobin complex and is a marker for monocytes and macrophages. Soluble CD163 (sCD163), as a result of ectodomain shedding during inflammatory activation of macrophages, circulates in blood and has been suggested as a plasma/serum marker for macrophage activity.

Publications notables

Autrice	Pubmed ID	Journal	Application
Xinmei Huang	34478541	J Clin Endocrinol Metab	IHC
Haoyu Guo	36201949	Biomaterials	IF
Yulin Xu	36146862	Viruses	WB

Stockage

Stockage:

Stocker à -20°C. Stable pendant un an après l'expédition.

Tampon de stockage:

PBS avec azoture de sodium à 0,02 % et glycérol à 50 % pH 7,3

L'aliquotage n'est pas nécessaire pour le stockage à -20C

*** Les 20ul contiennent 0,1% de BSA.

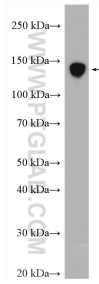
For technical support and original validation data for this product please contact:

T: 1 (888) 4PTGLAB (1-888-478-4522) (toll free in USA), or 1(312) 455-8498 (outside USA)

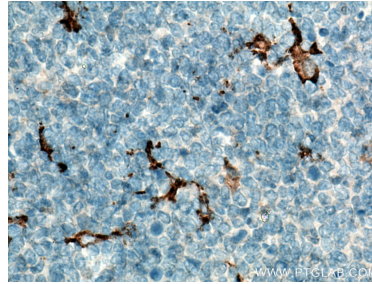
E: proteintech@ptglab.com
W: ptglab.com

This product is exclusively available under Proteintech Group brand and is not available to purchase from any other manufacturer.

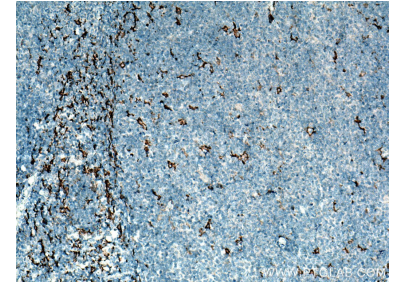
Données de validation sélectionnées



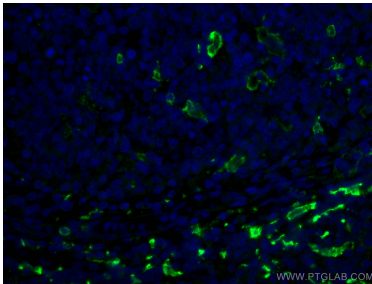
pig spleen tissue were subjected to SDS PAGE followed by western blot with 16646-1-AP (CD163 antibody) at dilution of 1:600 incubated at room temperature for 1.5 hours.



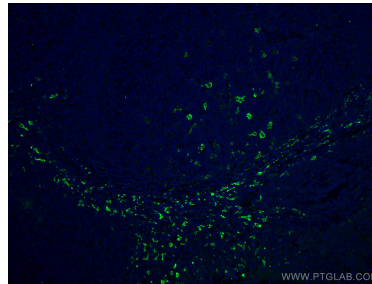
Immunohistochemical analysis of paraffin-embedded human tonsillitis tissue slide using 16646-1-AP (CD163 antibody) at dilution of 1:2000 (under 10x lens). Heat mediated antigen retrieval with Tris-EDTA buffer (pH 9.0).



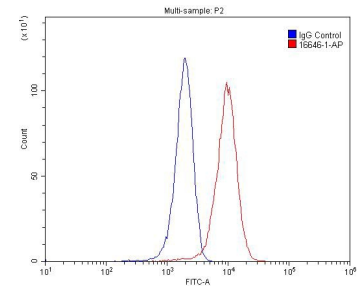
Immunohistochemical analysis of paraffin-embedded human tonsillitis tissue slide using 16646-1-AP (CD163 antibody) at dilution of 1:2000 (under 40x lens). Heat mediated antigen retrieval with Tris-EDTA buffer (pH 9.0).



Immunofluorescent analysis of (4% PFA) fixed human tonsillitis tissue using CD163 antibody (16646-1-AP) at dilution of 1:200 and CoraLite@488-Conjugated AffiniPure Goat Anti-Rabbit IgG(H+L).



Immunofluorescent analysis of (4% PFA) fixed human tonsillitis tissue using CD163 antibody (16646-1-AP) at dilution of 1:200 and CoraLite@488-Conjugated AffiniPure Goat Anti-Rabbit IgG(H+L).



1X10⁶ RAW 264.7 cells were stained with 0.2ug CD163 antibody (16646-1-AP, red) and control antibody (blue). Fixed with 4% PFA blocked with 3% BSA (30 min). Alexa Fluor 488-conjugated AffiniPure Goat Anti-Rabbit IgG(H+L) with dilution 1:1500.