

À des fins de recherche uniquement

Anticorps Polyclonal de lapin anti-LDB1



Numéro de catalogue: 16650-1-AP

Informations de base

Numéro de catalogue: 16650-1-AP	Numéro d'acquisition GenBank: BC000482	Méthode de purification: Purification par affinité contre l'antigène
Taille: 150ul , Concentration: 500 µg/ml by Nanodrop;	Identification du gène (NCBI): 8861	Dilutions recommandées: WB 1:1000-1:4000
Hôte: Lapin	Nom complet: LIM domain binding 1	
Isotype: IgG	MW calculé 46 kDa	
Immunogen Catalog Number: AG10082	MW observés: 46 kDa	

Applications

Applications testées: WB, ELISA	Contrôles positifs: WB : cellules HEK-293, cellules HeLa, cellules K-562, tissu rénal de souris
Spécificité de l'espèce: Humain	

Informations générales

LIM domain-binding protein 1 (LDB1), also known as Carboxyl-terminal LIM domain-binding protein 2 (CLIM2), binds to the LIM domain of a wide variety of LIM domain-containing transcription factors. LDB1 may regulate the transcriptional activity of LIM-containing proteins by determining specific partner interactions. It plays a role in the development of interneurons and motor neurons in cooperation with LHX3 and ISL1. LDB1 acts synergistically with LHX1/LIM1 in axis formation and activation of gene expression. It also acts with LMO2 in the regulation of red blood cell development, maintaining erythroid precursors in an immature state. LDB1 strongly interacts with the LIM2 domain of LMX1A to form homodimer. LDB1 protein is expressed in a wide range of adult tissues including brain, heart, skeletal muscle, colon, thymus, spleen, kidney, liver, small intestine, lung and peripheral blood leukocytes. Due to alternative splicing events, three isoforms exist for LDB1. This antibody reacts with isoform 1.

Stockage

Stockage:
Stocker à -20°C. Stable pendant un an après l'expédition.
Tampon de stockage:
PBS avec azoture de sodium à 0,02 % et glycérol à 50 % pH 7,3
L'aliquotage n'est pas nécessaire pour le stockage à -20C

***** Les 20ul contiennent 0,1% de BSA.**

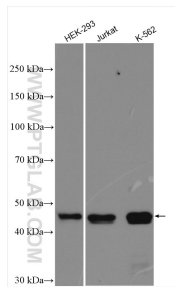
For technical support and original validation data for this product please contact:

T: 1 (888) 4PTGLAB (1-888-478-4522) (toll free in USA), or 1(312) 455-8498 (outside USA)

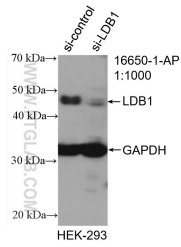
E: proteintech@ptglab.com
W: ptglab.com

This product is exclusively available under Proteintech Group brand and is not available to purchase from any other manufacturer.

Données de validation sélectionnées



Various lysates were subjected to SDS PAGE followed by western blot with 16650-1-AP (LDB1 antibody) at dilution of 1:2000 incubated at room temperature for 1.5 hours.



WB result of LDB1 antibody (16650-1-AP; 1:1000; incubated at room temperature for 1.5 hours) with sh-Control and sh-LDB1 transfected HEK-293 cells.