

À des fins de recherche uniquement

Anticorps Polyclonal de lapin anti-SPATA19



Numéro de catalogue: 16656-1-AP

2 Publications

Informations de base

Numéro de catalogue:

16656-1-AP

Taille:

150ul, Concentration: 240 µg/ml by Nanodrop and 180 µg/ml by Bradford method using BSA as the standard;

Hôte:

Lapin

Isotype:

IgG

Immunogen Catalog Number:

AG10108

Numéro d'acquisition GenBank:

BC058039

Identification du gène (NCBI):

219938

Nom complet:

spermatogenesis associated 19

MW calculé

167 aa, 19 kDa

MW observés:

19 kDa

Méthode de purification:

Purification par affinité contre l'antigène

Dilutions recommandées:

WB 1:500-1:2000

IHC 1:20-1:200

IF 1:50-1:500

Applications

Applications testées:

IF, IHC, WB, ELISA

Demandes citées:

IF, WB

Spécificité de l'espèce:

Humain, rat, souris

Espèces citées:

souris

Remarque-IHC: il est suggéré de démasquer l'antigène avec un tampon de TE buffer pH 9,0; (*) A défaut, le démasquage de l'antigène peut être effectué avec un tampon citrate pH 6,0.

Contrôles positifs:

WB : tissu testiculaire humain, tissu testiculaire de rat, tissu testiculaire de souris

IHC : tissu testiculaire humain, tissu cutané humain, tissu hépatique humain, tissu ovarien humain, tissu placentaire humain, tissu pulmonaire humain, tissu splénique humain

IF : tissu testiculaire de souris,

Informations générales

Publications notables

Autrice	Pubmed ID	Journal	Application
Xiaoli Wang	33674260	Development	WB,IF
	34437685	Development	WB,IF

Stockage

Stockage:

Stocker à -20°C. Stable pendant un an après l'expédition.

Tampon de stockage:

PBS avec azoture de sodium à 0,02 % et glycérol à 50 % pH 7,3

L'aliquotage n'est pas nécessaire pour le stockage à -20C

*** Les 20ul contiennent 0,1% de BSA.

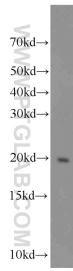
For technical support and original validation data for this product please contact:

T: 1 (888) 4PTGLAB (1-888-478-4522) (toll free in USA), or 1(312) 455-8498 (outside USA)

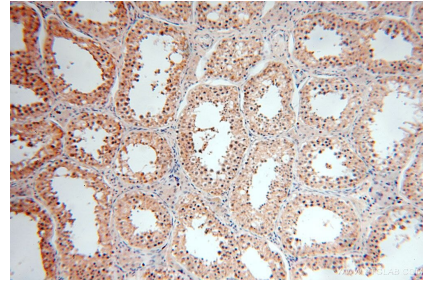
E: proteintech@ptglab.com
W: ptglab.com

This product is exclusively available under Proteintech Group brand and is not available to purchase from any other manufacturer.

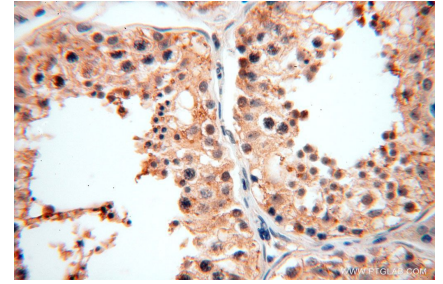
Données de validation sélectionnées



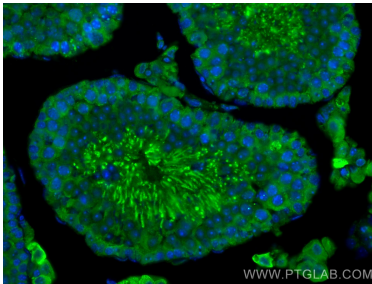
human testis tissue were subjected to SDS PAGE followed by western blot with 16656-1-AP (SPATA19 antibody) at dilution of 1:1000 incubated at room temperature for 1.5 hours.



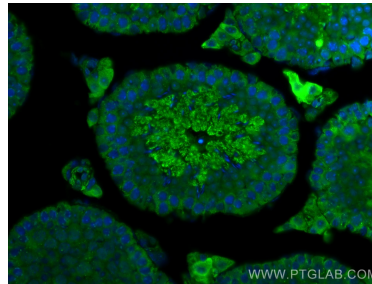
Immunohistochemical analysis of paraffin-embedded human testis using 16656-1-AP (SPATA19 antibody) at dilution of 1:100 (under 10x lens).



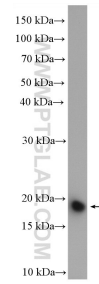
Immunohistochemical analysis of paraffin-embedded human testis using 16656-1-AP (SPATA19 antibody) at dilution of 1:100 (under 40x lens).



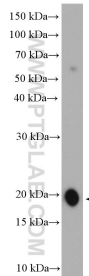
Immunofluorescent analysis of (4% PFA) fixed mouse testis tissue using SPATA19 antibody (16656-1-AP) at dilution of 1:200 and CoraLite®488-Conjugated AffiniPure Goat Anti-Rabbit IgG(H+L).



Immunofluorescent analysis of (4% PFA) fixed mouse testis tissue using SPATA19 antibody (16656-1-AP) at dilution of 1:200 and CoraLite®488-Conjugated AffiniPure Goat Anti-Rabbit IgG(H+L).



mouse testis tissue were subjected to SDS PAGE followed by western blot with 16656-1-AP (SPATA19 antibody) at dilution of 1:1500 incubated at room temperature for 1.5 hours.



rat testis tissue were subjected to SDS PAGE followed by western blot with 16656-1-AP (SPATA19 antibody) at dilution of 1:1500 incubated at room temperature for 1.5 hours.