

À des fins de recherche uniquement

# Anticorps Polyclonal de lapin anti-CD3 Delta



Numéro de catalogue: 16669-1-AP

5 Publications

## Informations de base

Numéro de catalogue:  
16669-1-AP

Taille:  
150ul, Concentration: 300 µg/ml by Nanodrop and 260 µg/ml by Bradford method using BSA as the standard;

Hôte:  
Lapin

Isotype:  
IgG

Immunogen Catalog Number:  
AG10148

Numéro d'acquisition GenBank:  
BC070321

Identification du gène (NCBI):  
915

Nom complet:  
CD3d molecule, delta (CD3-TCR complex)

MW calculé  
171 aa, 19 kDa

MW observés:  
20-25 kDa

Méthode de purification:  
Purification par affinité contre l'antigène

Dilutions recommandées:  
WB 1:500-1:3000  
IP 0.5-4.0 ug for IP and 1:500-1:1000 for WB  
IF 1:50-1:500

## Applications

Applications testées:  
FC, IF, IP, WB, ELISA

Demandes citées:  
IF, IHC, IP, WB

Spécificité de l'espèce:  
Humain, rat, souris

Espèces citées:  
Humain, souris

Contrôles positifs:

WB : cellules Jurkat, tissu de thymus de rat, tissu de thymus de souris

IP : cellules Jurkat,

IF : tissu d'amygdalite humain,

## Informations générales

CD3 is a complex of proteins that directly associates with the T cell receptor (TCR). The TCR/CD3 complex of T-Lymphocytes consists of either a TCR alpha/beta or TCR gamma/delta heterodimer coexpressed at the cell surface with the invariant subunits of CD3 labeled gamma, delta, epsilon, zeta, and eta. The TCR recognizes antigens bound to major histocompatibility complex (MHC) molecules. TCR-mediated peptide-MHC recognition is transmitted to the CD3 complex, leading to the intracellular signal transduction. CD3 is considered to be a pan-T cell marker for detection of normal and neoplastic T cells.

## Publications notables

Autrice	Pubmed ID	Journal	Application
Yuji Fukushima	36130493	Cell Rep	WB,IP
Marie Klintman	27179111	Clin Cancer Res	
Binghao Li	29735547	Cancer Res	IHC

## Stockage

Stockage:

Stocker à -20°C. Stable pendant un an après l'expédition.

Tampon de stockage:

PBS avec azoture de sodium à 0,02 % et glycérol à 50 % pH 7,3

L'aliquotage n'est pas nécessaire pour le stockage à -20C

\*\*\* Les 20ul contiennent 0,1% de BSA.

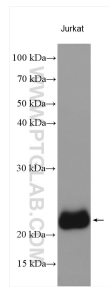
For technical support and original validation data for this product please contact:

T: 1 (888) 4PTGLAB (1-888-478-4522) (toll free in USA), or 1(312) 455-8498 (outside USA)

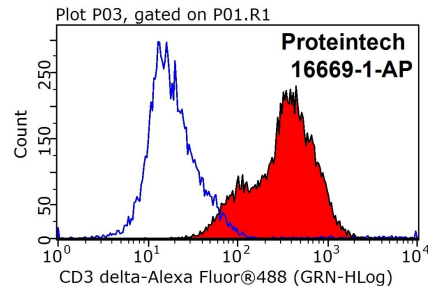
E: proteintech@ptglab.com  
W: ptglab.com

This product is exclusively available under Proteintech Group brand and is not available to purchase from any other manufacturer.

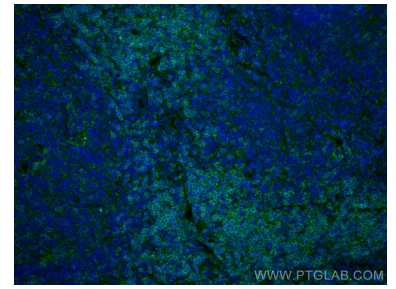
## Données de validation sélectionnées



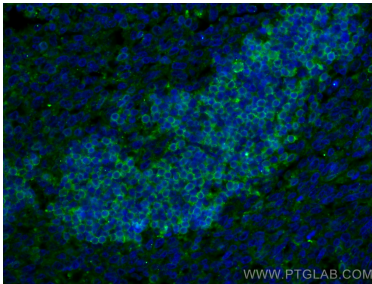
Jurkat cells were subjected to SDS PAGE followed by western blot with 16669-1-AP (CD3 delta antibody) at dilution of 1:1500 incubated at room temperature for 1.5 hours.



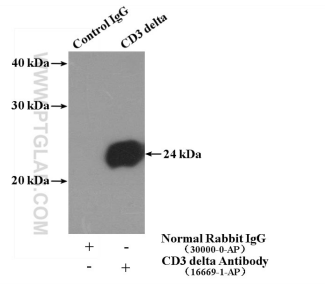
1X10<sup>6</sup> Jurkat cells were stained with 0.5ug CD3 delta antibody (16669-1-AP, red) and control antibody (blue). Fixed with 90% MeOH blocked with 3% BSA (30 min). Alexa Fluor 488-conjugated AffiniPure Goat Anti-Rabbit IgG(H+L) with dilution 1:1000.



Immunofluorescent analysis of (4% PFA) fixed human tonsillitis tissue using CD3 Delta antibody (16669-1-AP) at dilution of 1:200 and CoraLite@488-Conjugated AffiniPure Goat Anti-Rabbit IgG(H+L).



Immunofluorescent analysis of (4% PFA) fixed human tonsillitis tissue using CD3 Delta antibody (16669-1-AP) at dilution of 1:200 and CoraLite@488-Conjugated AffiniPure Goat Anti-Rabbit IgG(H+L).



IP Result of anti-CD3 delta (IP:16669-1-AP, 4ug; Detection:16669-1-AP 1:800) with Jurkat cells lysate 2800ug.