

À des fins de recherche uniquement

Anticorps Polyclonal de lapin anti-KLHL14



Numéro de catalogue: 16693-1-AP

Informations de base

Numéro de catalogue: 16693-1-AP	Numéro d'acquisition GenBank: BC021267	Méthode de purification: Purification par affinité contre l'antigène
Taille: 150ul, Concentration: 850 µg/ml by Nanodrop and 407 µg/ml by Bradford method using BSA as the standard;	Identification du gène (NCBI): 57565	Dilutions recommandées: WB 1:1000-1:4000 IF 1:20-1:200
Hôte: Lapin	Nom complet: kelch-like 14 (Drosophila)	
Isotype: IgG	MW calculé 44 kDa, 71 kDa	
Immunogen Catalog Number: AG10065	MW observés: 35 kDa, 70 kDa	

Applications

Applications testées: IF, WB, ELISA	Contrôles positifs: WB : cellules PC-3, cellules HepG2, cellules MCF-7
Spécificité de l'espèce: Humain, rat, souris	IF : cellules HepG2,

Informations générales

Kelch-like protein 14 (KLHL14) is a member of the KLHL family. The kelch motif was initially discovered in Kelch. In this protein there are six copies of the motif. It has been shown for one member that it is related to Galactose Oxidase for which a structure has been solved. Two isoforms of this protein exist - 70kDa and 43kDa.

Stockage

Stockage:
Stocker à -20°C. Stable pendant un an après l'expédition.
Tampon de stockage:
PBS avec azoture de sodium à 0,02 % et glycérol à 50 % pH 7,3
L'aliquotage n'est pas nécessaire pour le stockage à -20C

***** Les 20ul contiennent 0,1% de BSA.**

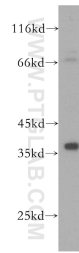
For technical support and original validation data for this product please contact:

T: 1 (888) 4PTGLAB (1-888-478-4522) (toll free in USA), or 1(312) 455-8498 (outside USA)

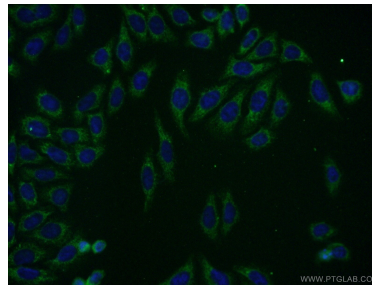
E: proteintech@ptglab.com
W: ptglab.com

This product is exclusively available under Proteintech Group brand and is not available to purchase from any other manufacturer.

Données de validation sélectionnées



PC-3 cells were subjected to SDS PAGE followed by western blot with 16693-1-AP (KLHL14 antibody) at dilution of 1:1000 incubated at room temperature for 1.5 hours.



Immunofluorescent analysis of (-20°C Ethanol) fixed HepG2 cells using 16693-1-AP (KLHL14 antibody) at dilution of 1:50 and Alexa Fluor 488-conjugated AffiniPure Goat Anti-Rabbit IgG(H+L).