

À des fins de recherche uniquement

Anticorps Polyclonal de lapin anti-MTH1



Numéro de catalogue: 16705-1-AP

Phare

2 Publications

Informations de base

Numéro de catalogue:

16705-1-AP

Taille:

150ul, Concentration: 133 µg/ml by Bradford method using BSA as the standard;

Hôte:

Lapin

Isotype:

IgG

Immunogen Catalog Number:

AG10103

Numéro d'acquisition GenBank:

BC014618

Identification du gène (NCBI):

4521

Nom complet:

nudix (nucleoside diphosphate linked moiety X)-type motif 1

MW calculé

179aa,20 kDa; 197aa,23 kDa

MW observés:

18-24 kDa

Méthode de purification:

Purification par affinité contre l'antigène

Dilutions recommandées:

WB 1:200-1:1000

IF 1:10-1:100

Applications

Applications testées:

IF, WB, ELISA

Demandes citées:

WB

Spécificité de l'espèce:

Humain, rat, souris

Espèces citées:

Humain, souris

Contrôles positifs:

WB : cellules HepG2, cellules HEK-293, cellules PC-3

IF : cellules PC-3,

Informations générales

MTH1, also known as NUDT1 or 8-Oxo-dGTPase, is an important repair enzyme that prevents oxidative stress-induced DNA damage through hydrolyzing mutagenic 8-oxo-dGTP into 8-oxo-dGMP. MTH1 is expressed in postmitotic neurons as well as in proliferative tissues, and it is localized both in the mitochondria and nucleus. MTH1 might be a useful marker of oxidative stress and its level increased upon oxidative stress. Increased expression of MTH1 were also found in various cancer tissues and neurodegenerative diseases.

Publications notables

Autrice	Pubmed ID	Journal	Application
Ya Gao	29221173	Oncotarget	WB
Xiang Wang	35395477	Colloids Surf B Biointerfaces	WB

Stockage

Stockage:

Stocker à -20°C. Stable pendant un an après l'expédition.

Tampon de stockage:

PBS avec azoture de sodium à 0,02 % et glycérol à 50 % pH 7,3

L'aliquotage n'est pas nécessaire pour le stockage à -20C

*** Les 20ul contiennent 0,1% de BSA.

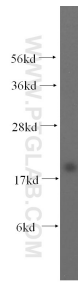
For technical support and original validation data for this product please contact:

T: 1 (888) 4PTGLAB (1-888-478-4522) (toll free in USA), or 1(312) 455-8498 (outside USA)

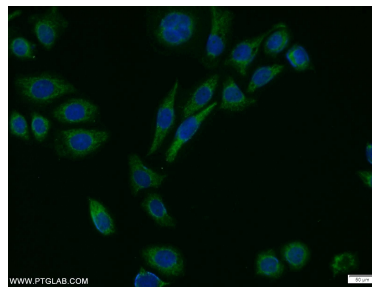
E: proteintech@ptglab.com
W: ptglab.com

This product is exclusively available under Proteintech Group brand and is not available to purchase from any other manufacturer.

Données de validation sélectionnées



HepG2 cells were subjected to SDS PAGE followed by western blot with 16705-1-AP (MTH1 antibody) at dilution of 1:300 incubated at room temperature for 1.5 hours.



Immunofluorescent analysis of PC-3 cells using 16705-1-AP (MTH1 antibody) at dilution of 1:25 and Alexa Fluor 488-conjugated AffiniPure Goat Anti-Rabbit IgG(H+L).