

À des fins de recherche uniquement

# Anticorps Polyclonal de lapin anti- PSPC1



Numéro de catalogue: 16714-1-AP

5 Publications

## Informations de base

Numéro de catalogue:  
16714-1-AP

Taille:  
150ul, Concentration: 793 µg/ml by  
Bradford method using BSA as the  
standard;

Hôte:  
Lapin

Isotype:  
IgG

Immunogen Catalog Number:  
AG10136

Numéro d'acquisition GenBank:  
BC014184

Identification du gène (NCBI):  
55269

Nom complet:  
paraspeckle component 1

MW calculé  
523 aa, 59 kDa

MW observés:  
66 kDa

Méthode de purification:  
Purification par affinité contre  
l'antigène

Dilutions recommandées:  
WB 1:5000-1:50000  
IP 0.5-4.0 ug for IP and 1:500-1:2000  
for WB  
IF 1:50-1:500

## Applications

Applications testées:  
IF, IP, WB, ELISA

Demandes citées:  
IF, WB

Spécificité de l'espèce:  
Humain, rat, souris

Espèces citées:  
Humain, souris

Contrôles positifs:

WB : cellules HEK-293, cellules HepG2, cellules PC-3

IP : cellules HEK-293,

IF : cellules PC-3,

## Informations générales

PSPC1 (paraspeckle component 1), a known paraspeckle biomarker, is a putative transcription factor that belongs to the Drosophila behavior/human splicing (DBHS) family. PSPC1 was recently identified as a contextual determinant of tumor progression in multiple cancer types involving oncogenic reprogramming to switch proapoptotic TGF-β to prometastatic TGF-β via hijacking of Smad2/3 targeting. Upregulated PSPC1 is correlated with advanced tumor stages and poor survival of patients with breast, lung, and liver cancers. Upregulated PSPC1 potentiates expression of mesenchymal markers, EMT transcription factors (EMT-TF), cancer stem-like cell transcription factors (CSC-TF), and c-Myc-related proliferation genes, thus promoting migration, invasion, spheroid formation, tumor formation, and metastasis.

## Publications notables

Autrice	Pubmed ID	Journal	Application
Jing Fan	30032211	Nucleic Acids Res	WB
Ralf Kleene	36674445	Int J Mol Sci	WB
Wei Zhang	37647746	Drug Resist Updat	WB

## Stockage

Stockage:

Stocker à -20°C. Stable pendant un an après l'expédition.

Tampon de stockage:

PBS avec azoture de sodium à 0,02 % et glycérol à 50 % pH 7,3

L'aliquotage n'est pas nécessaire pour le stockage à -20C

\*\*\* Les 20ul contiennent 0,1% de BSA.

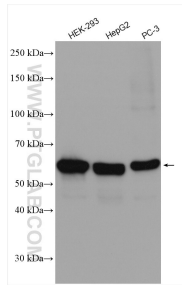
For technical support and original validation data for this product please contact:

T: 1 (888) 4PTGLAB (1-888-478-4522) (toll free  
in USA), or 1(312) 455-8498 (outside USA)

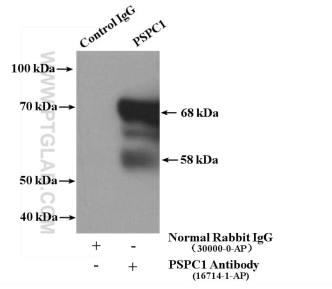
E: proteintech@ptglab.com  
W: ptglab.com

This product is exclusively available under Proteintech Group brand and is not available to purchase from any other manufacturer.

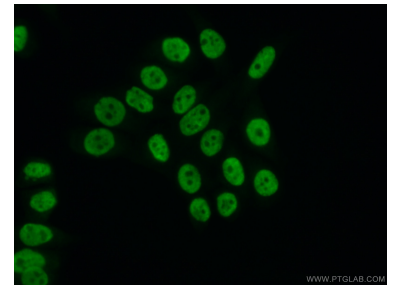
## Données de validation sélectionnées



Various lysates were subjected to SDS PAGE followed by western blot with 16714-1-AP (PSPC1 antibody) at dilution of 1:12000 incubated at room temperature for 1.5 hours.



IP Result of anti-PSPC1 (IP:16714-1-AP, 4ug; Detection:16714-1-AP 1:1000) with HEK-293 cells lysate 2800ug.



Immunofluorescent analysis of (10% Formaldehyde) fixed PC-3 cells using 16714-1-AP (PSPC1 antibody) at dilution of 1:50 and Alexa Fluor 488-conjugated AffiniPure Goat Anti-Rabbit IgG(H+L).