

À des fins de recherche uniquement

Anticorps Polyclonal de lapin anti-NPL



Numéro de catalogue: 16715-1-AP

Informations de base

Numéro de catalogue: 16715-1-AP	Numéro d'acquisition GenBank: BC058003	Méthode de purification: Purification par affinité contre l'antigène
Taille: 150ul , Concentration: 400 µg/ml by Nanodrop and 267 µg/ml by Bradford method using BSA as the standard;	Identification du gène (NCBI): 80896	Dilutions recommandées: WB 1:500-1:2000 IF 1:10-1:100
Hôte: Lapin	Nom complet: N-acetylneuraminate pyruvate lyase (dihydrodipicolinate synthase)	
Isotype: IgG	MW calculé 27 kDa, 35 kDa	
Immunogen Catalog Number: AG10137	MW observés: 35 kDa	

Applications

Applications testées:
IF, WB, ELISA

Spécificité de l'espèce:
Humain, rat, souris

Contrôles positifs:

WB : tissu cérébral de souris, cellules Raji, tissu cérébral de rat, tissu rénal de rat, tissu rénal de souris

IF : cellules MCF-7,

Informations générales

The N-acetylneuraminate lyase(NPL) from human (hNAL) which consists of 320 amino acids, has a molecular mass of 35.2 kDa and it catalyses the reversible aldol reaction of sialic acid, and has been extensively used in the synthesis of sialic acids and its analogues(PMID:19057931). The enzyme is widely distributed and are present in numerous pro- and eukaryotic cells, in which they are localized only in the cytosol(PMID:12453637). It belongs to the DHDP5 family and has 5 isoforms produced by alternative splicing.

Stockage

Stockage:
Stocker à -20°C. Stable pendant un an après l'expédition.

Tampon de stockage:
PBS avec azoture de sodium à 0,02 % et glycérol à 50 % pH 7,3

L'aliquotage n'est pas nécessaire pour le stockage à -20C

*** Les 20ul contiennent 0,1% de BSA.

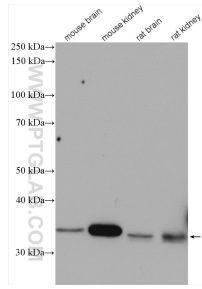
For technical support and original validation data for this product please contact:

T: 1 (888) 4PTGLAB (1-888-478-4522) (toll free in USA), or 1(312) 455-8498 (outside USA)

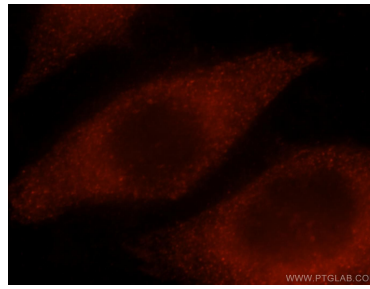
E: proteintech@ptglab.com
W: ptglab.com

This product is exclusively available under Proteintech Group brand and is not available to purchase from any other manufacturer.

Données de validation sélectionnées



Various lysates were subjected to SDS PAGE followed by western blot with 16715-1-AP (NPL antibody) at dilution of 1:1000 incubated at room temperature for 1.5 hours.



Immunofluorescent analysis of MCF-7 cells, using NPL antibody 16715-1-AP at 1:25 dilution and Rhodamine-labeled goat anti-rabbit IgG (red).