

À des fins de recherche uniquement

# Anticorps Polyclonal de lapin anti-OBFC2A



Numéro de catalogue: 16719-1-AP

Phare

6 Publications

## Informations de base

Numéro de catalogue:  
16719-1-AP

Taille:  
150ul, Concentration: 400 µg/ml by Nanodrop and 240 µg/ml by Bradford method using BSA as the standard;

Hôte:  
Lapin

Isotype:  
IgG

Immunogen Catalog Number:  
AG10158

Numéro d'acquisition GenBank:  
BC107723

Identification du gène (NCBI):  
64859

Nom complet:  
oligonucleotide/oligosaccharide-binding fold containing 2A

MW calculé:  
124 aa, 14 kDa

MW observés:  
22 kDa

Méthode de purification:  
Purification par affinité contre l'antigène

Dilutions recommandées:  
WB 1:500-1:1000

## Applications

Applications testées:  
WB, ELISA

Demandes citées:  
IP, WB

Spécificité de l'espèce:  
Humain, rat, souris

Espèces citées:  
Humain, souris

Contrôles positifs:

WB: cellules COLO 320,

## Informations générales

Single-stranded DNA (ssDNA)-binding proteins (SSBs) are ubiquitous and essential for a variety of DNA metabolic processes, including recombination, replication, and detection and repair of damage. SSBs have multiple roles in binding and sequestering ssDNA, detecting DNA damage, stimulating nucleases, helicases and strand-exchange proteins, activating transcription and mediating protein-protein interactions [PMID:18449195] Human single-stranded DNA-binding protein 1 (hSSB1), encoded by OBFC2B, is characterized as an essential factor for the initiation of DNA damage checkpoints and the maintenance of genomic stability [PMID:22940690].

## Publications notables

Autrice	Pubmed ID	Journal	Application
Didier Boucher	34642383	Sci Rep	IP
Qianxue Wu	34868954	Front Oncol	WB
Matthias Pfeifer	31085591	J Immunol	WB

## Stockage

Stockage:

Stocker à -20°C. Stable pendant un an après l'expédition.

Tampon de stockage:

PBS avec azoture de sodium à 0,02 % et glycérol à 50 % pH 7,3

L'aliquotage n'est pas nécessaire pour le stockage à -20C

\*\*\* Les 20ul contiennent 0,1% de BSA.

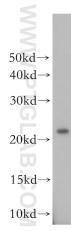
For technical support and original validation data for this product please contact:

T: 1 (888) 4PTGLAB (1-888-478-4522) (toll free in USA), or 1(312) 455-8498 (outside USA)

E: proteintech@ptglab.com  
W: ptglab.com

This product is exclusively available under Proteintech Group brand and is not available to purchase from any other manufacturer.

## Données de validation sélectionnées



COLO 320 cells were subjected to SDS PAGE followed by western blot with 16719-1-AP (OBF2A antibody) at dilution of 1:500 incubated at room temperature for 1.5 hours.