

À des fins de recherche uniquement

Anticorps Polyclonal de lapin anti-EXOSC10



Numéro de catalogue: 16731-1-AP **Phare**

Informations de base

Numéro de catalogue:
16731-1-AP

Taille:
150ul, Concentration: 1000 µg/ml by
Nanodrop and 533 µg/ml by Bradford
method using BSA as the standard;

Hôte:
Lapin

Isotype:
IgG

Immunogen Catalog Number:
AG10189

Numéro d'acquisition GenBank:
BC073788

Identification du gène (NCBI):
5394

Nom complet:
exosome component 10

MW calculé
885 aa, 101 kDa

MW observés:
100 kDa

Méthode de purification:

Purification par affinité contre
l'antigène

Dilutions recommandées:

WB 1:1000-1:8000
IP 0.5-4.0 ug for IP and 1:500-1:1000
for WB
IHC 1:50-1:500
IF 1:20-1:200

Applications

Applications testées:
IF, IHC, IP, WB, ELISA

Spécificité de l'espèce:
Humain, souris

Remarque-IHC: il est suggéré de démasquer l'antigène avec un tampon de TE buffer pH 9,0; (*) À défaut, le démasquage de l'antigène peut être effectué avec un tampon citrate pH 6,0.

Contrôles positifs:

WB : cellules BxPC-3, cellules HeLa, tissu splénique de souris

IP : cellules HeLa,

IHC : tissu de cancer de l'estomac humain, tissu de cancer du foie humain

IF : cellules HeLa, cellules NIH/3T3

Informations générales

About 50% of patients with polymyositis/scleroderma (PM-Scl) overlap syndrome are reported to have autoantibodies to a nuclear/nucleolar particle termed PM-Scl. Exosome component 10 (EXOSC10), also named autoantigen PM/Scl 2, is the 100 kDa antigen component of PM-Scl and is recognized by most sera of PM-Scl patients. EXOSC10 is strongly enriched in the nucleolus and a small amount has been found in cytoplasm supporting the existence of a nucleolar RNA exosome complex form. As a putative catalytic component of the RNA exosome complex which has 3'->5' exoribonuclease activity, EXOSC10 participates in a multitude of cellular RNA processing and degradation events.

Stockage

Stockage:

Stocker à -20°C. Stable pendant un an après l'expédition.

Tampon de stockage:

PBS avec azoture de sodium à 0,02 % et glycérol à 50 % pH 7,3

L'aliquotage n'est pas nécessaire pour le stockage à -20C

*** Les 20ul contiennent 0,1% de BSA.

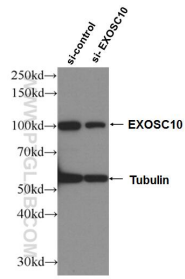
For technical support and original validation data for this product please contact:

T: 1 (888) 4PTGLAB (1-888-478-4522) (toll free in USA), or 1(312) 455-8498 (outside USA)

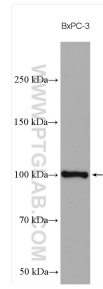
E: proteintech@ptglab.com
W: ptglab.com

This product is exclusively available under Proteintech Group brand and is not available to purchase from any other manufacturer.

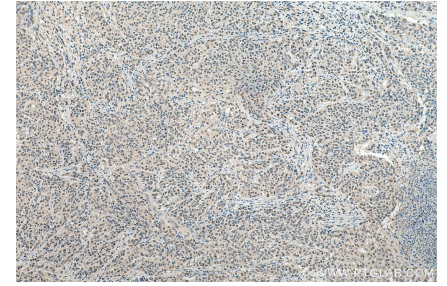
Données de validation sélectionnées



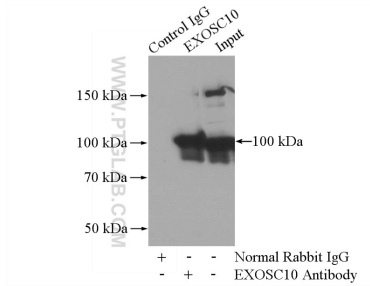
WB result of EXOSC10 antibody (16731-1-AP; 1:10000; incubated at room temperature for 1.5 hours) with sh-Control and sh-EXOSC10 transfected HeLa cells.



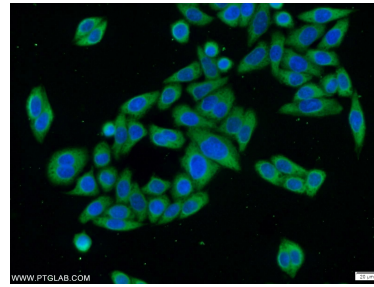
BxPC-3 cells were subjected to SDS PAGE followed by western blot with 16731-1-AP (EXOSC10 antibody) at dilution of 1:4000 incubated at room temperature for 1.5 hours.



Immunohistochemical analysis of paraffin-embedded human stomach cancer tissue slide using 16731-1-AP (EXOSC10 antibody) at dilution of 1:200 (under 10x lens). Heat mediated antigen retrieval with Tris-EDTA buffer (pH 9.0).



IP Result of anti-EXOSC10 (IP:16731-1-AP, 4ug; Detection:16731-1-AP 1:700) with HeLa cells lysate 1200ug.



Immunofluorescent analysis of HeLa cells using 16731-1-AP (EXOSC10 antibody) at dilution of 1:50 and Alexa Fluor 488-conjugated AffiniPure Goat Anti-Rabbit IgG(H+L).