

À des fins de recherche uniquement

Anticorps Polyclonal de lapin anti-PHKG1



Numéro de catalogue: 16743-1-AP

1 Publications

Informations de base

Numéro de catalogue:

16743-1-AP

Taille:

150ul, Concentration: 450 µg/ml by Nanodrop and 280 µg/ml by Bradford method using BSA as the standard;

Hôte:

Lapin

Isotype:

IgG

Immunogen Catalog Number:

AG10032

Numéro d'acquisition GenBank:

BC051327

Identification du gène (NCBI):

5260

Nom complet:

phosphorylase kinase, gamma 1 (muscle)

MW calculé

387 aa, 45 kDa

MW observés:

40 kDa

Méthode de purification:

Purification par affinité contre l'antigène

Dilutions recommandées:

WB 1:1000-1:5000

IP 0.5-4.0 ug for IP and 1:500-1:1000 for WB

IHC 1:50-1:500

Applications

Applications testées:

IHC, IP, WB, ELISA

Demandes citées:

WB

Spécificité de l'espèce:

Humain, rat, souris

Espèces citées:

porc

Remarque-IHC: il est suggéré de démasquer l'antigène avec un tampon de TE buffer pH 9,0; (*) A défaut, 'le démasquage de l'antigène peut être 'effectué avec un tampon citrate pH 6,0.

Contrôles positifs:

WB : tissu de muscle squelettique de souris, tissu de muscle squelettique de rat

IP : tissu de muscle squelettique de souris,

IHC : tissu de muscle squelettique de souris,

Informations générales

PHKG1(Phosphorylase b kinase gamma catalytic chain, skeletal muscle isoform) is also named as phosphorylase kinase subunit gamma-1, PHKG and belongs to the CAMK Ser/Thr protein kinase family. Phosphorylase kinase is a crucial glycogenolytic regulatory enzyme. The holoenzymes are composed of 16 subunit proteins containing equimolar ratios of 4 subunit types known as alpha, beta, gamma, and delta. This protein is the skeletal muscle isoform of phosphorylase kinase and kinetic differences exist between the cardiac and adult skeletal muscle enzymes, and the liver and skeletal muscle enzymes are known to be separate isozymes.

Publications notables

Autrice	Pubmed ID	Journal	Application
Junwu Ma	25340394	PLoS Genet	WB

Stockage

Stockage:

Stocker à -20°C. Stable pendant un an après l'expédition.

Tampon de stockage:

PBS avec azoture de sodium à 0,02 % et glycérol à 50 % pH 7,3

L'aliquotage n'est pas nécessaire pour le stockage à -20C

*** Les 20ul contiennent 0,1% de BSA.

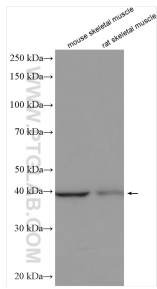
For technical support and original validation data for this product please contact:

T: 1 (888) 4PTGLAB (1-888-478-4522) (toll free in USA), or 1(312) 455-8498 (outside USA)

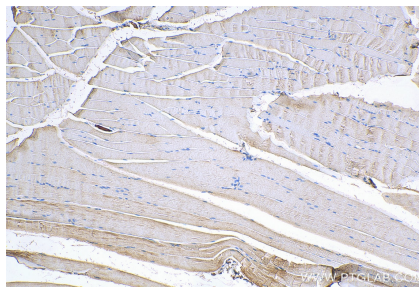
E: proteintech@ptglab.com
W: ptglab.com

This product is exclusively available under Proteintech Group brand and is not available to purchase from any other manufacturer.

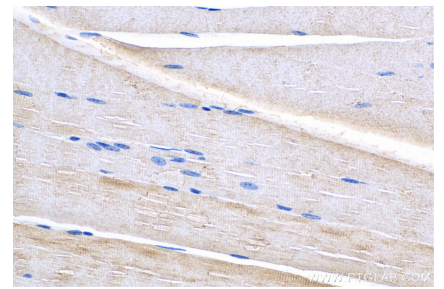
Données de validation sélectionnées



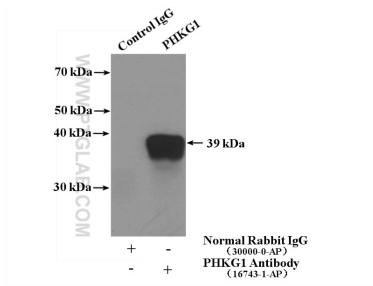
Various lysates were subjected to SDS PAGE followed by western blot with 16743-1-AP (PHKG1 antibody) at dilution of 1:2500 incubated at room temperature for 1.5 hours.



Immunohistochemical analysis of paraffin-embedded mouse skeletal muscle tissue slide using 16743-1-AP (PHKG1 antibody) at dilution of 1:200 (under 10x lens). Heat mediated antigen retrieval with Tris-EDTA buffer (pH 9.0).



Immunohistochemical analysis of paraffin-embedded mouse skeletal muscle tissue slide using 16743-1-AP (PHKG1 antibody) at dilution of 1:200 (under 40x lens). Heat mediated antigen retrieval with Tris-EDTA buffer (pH 9.0).



IP Result of anti-PHKG1 (IP:16743-1-AP, 4ug; Detection:16743-1-AP 1:600) with mouse skeletal muscle tissue lysate 4000ug.