

À des fins de recherche uniquement

Anticorps Polyclonal de lapin anti-IL-15RA



Numéro de catalogue: 16744-1-AP

7 Publications

Informations de base

| | | |
|---|---|--|
| Numéro de catalogue: 16744-1-AP | Numéro d'acquisition GenBank: BC107777 | Méthode de purification: Purification par affinité contre l'antigène |
| Taille: 150ul, Concentration: 400 µg/ml by Nanodrop and 233 µg/ml by Bradford method using BSA as the standard; | Identification du gène (NCBI): 3601 | Dilutions recommandées: WB 1:500-1:1000 IHC 1:50-1:500 |
| Hôte: Lapin | Nom complet: interleukin 15 receptor, alpha | |
| Isotype: IgG | MW calculé: 231 aa, 24 kDa | |
| Immunogen Catalog Number: AG10151 | MW observés: 55-65 kDa | |

Applications

Applications testées:

IHC, WB, ELISA

Demandes citées:

IF, IHC, WB

Spécificité de l'espèce:

Humain

Espèces citées:

Humain, Hamster

Remarque-IHC: il est suggéré de démasquer l'antigène avec un tampon de TE buffer pH 9,0; (*) A défaut, 'le démasquage de l'antigène peut être effectué avec un tampon citrate pH 6,0.

Contrôles positifs:

WB : cellules HeLa,

IHC : tissu de cancer du foie humain, tissu cardiaque humain, tissu cérébral humain, tissu cutané humain, tissu rénal humain, tissu splénique humain, tissu testiculaire humain

Informations générales

Interleukin-15 (IL-15) is a pleiotropic cytokine that plays an important role in both innate and adaptive immunity. IL-15 is mainly produced by activated monocytes, macrophages and dendritic cells, and is structurally similar to IL-2 (PMID: 8178155; 12401478). These two cytokines share the same IL-2/15R β and common γ -chain receptor subunits. In addition, IL-2 and IL-15 have their own private α -chain receptor subunit, IL-2R α and IL-15R α , respectively (PMID: 7641685). The IL-15R α chain is expressed by many cell types including monocytes, DCs, NK, T cells and fibroblasts. Several isoforms of IL-15R α exist and are generated either by alternative splicing or by proteolytic cleavage (PMID: 10480910; 15265897). The calculated molecular weight of full-length IL-15R α is 28 kDa, IL-15R α can be glycosylated, and larger apparent molecular weights of 55-65 kDa have been reported by some researches (PMID: 10480910; 15976182; 15671076; 17912462).

Publications notables

| Autrice | Pubmed ID | Journal | Application |
|----------------|-----------|---------------------|-------------|
| Debashis Sahoo | 32995790 | bioRxiv | IHC |
| Pradipta Ghosh | 35577777 | Nat Commun | IHC |
| Xuguang Chen | 31078730 | Free Radic Biol Med | WB, IF |

Stockage

Stockage:

Stocker à -20°C. Stable pendant un an après l'expédition.

Tampon de stockage:

PBS avec azoture de sodium à 0,02 % et glycérol à 50 % pH 7,3

L'aliquotage n'est pas nécessaire pour le stockage à -20C

*** Les 20ul contiennent 0,1% de BSA.

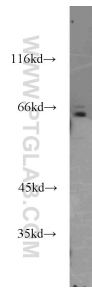
For technical support and original validation data for this product please contact:

T: 1 (888) 4PTGLAB (1-888-478-4522) (toll free in USA), or 1(312) 455-8498 (outside USA)

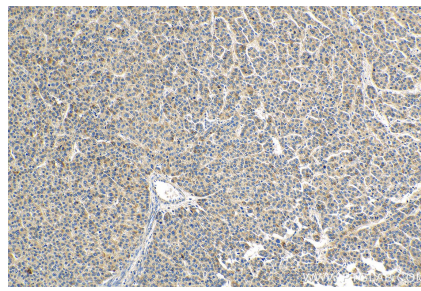
E: proteintech@ptglab.com
W: ptglab.com

This product is exclusively available under Proteintech Group brand and is not available to purchase from any other manufacturer.

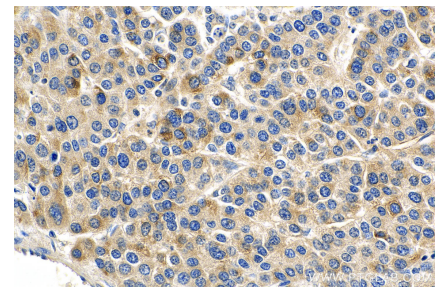
Données de validation sélectionnées



HeLa cells were subjected to SDS PAGE followed by western blot with 16744-1-AP (IL15RA antibody) at dilution of 1:500 incubated at room temperature for 1.5 hours.



Immunohistochemical analysis of paraffin-embedded human liver cancer tissue slide using 16744-1-AP (IL-15RA antibody) at dilution of 1:200 (under 10x lens). Heat mediated antigen retrieval with Tris-EDTA buffer (pH 9.0).



Immunohistochemical analysis of paraffin-embedded human liver cancer tissue slide using 16744-1-AP (IL-15RA antibody) at dilution of 1:200 (under 40x lens). Heat mediated antigen retrieval with Tris-EDTA buffer (pH 9.0).