

À des fins de recherche uniquement

# Anticorps Polyclonal de lapin anti-PCK1



Numéro de catalogue: 16754-1-AP

Phare

57 Publications

## Informations de base

Numéro de catalogue:

16754-1-AP

Taille:

150ul, Concentration: 650 µg/ml by Nanodrop;

Hôte:

Lapin

Isotype:

IgG

Immunogen Catalog Number:

AG10261

Numéro d'acquisition GenBank:

BC023978

Identification du gène (NCBI):

5105

Nom complet:

phosphoenolpyruvate carboxykinase 1 (soluble)

MW calculé

622 aa, 69 kDa

MW observés:

66-69 kDa

Méthode de purification:

Purification par affinité contre l'antigène

Dilutions recommandées:

WB 1:5000-1:50000

IP 0.5-4.0 ug for IP and 1:500-1:1000 for WB

IF 1:200-1:800

## Applications

Applications testées:

IF, IP, WB, ELISA

Demandes citées:

CoIP, IF, IHC, IP, WB

Spécificité de l'espèce:

Humain, rat, souris

Espèces citées:

bovin, Chèvre, Humain, porc, rat, souris

Contrôles positifs:

WB : tissu hépatique de souris, cellules HepG2, tissu hépatique de rat

IP : cellules HepG2,

IF : cellules HepG2,

## Informations générales

PCK1(Phosphoenolpyruvate carboxykinase, cytosolic) is also named as PEPC1 and belongs to the phosphoenolpyruvate carboxykinase [GTP] family. It catalyzes the formation of phosphoenolpyruvate from oxaloacetate, with the release of carbon dioxide and GDP. It is also a main control point for the regulation of gluconeogenesis. In eukaryotes there are two isozymes: a cytoplasmic one and a mitochondrial one. Defects in PCK1 are the cause of cytosolic phosphoenolpyruvate carboxykinase deficiency (C-PEPCKD).

## Publications notables

Autrice	Pubmed ID	Journal	Application
Yong Zhang	32970960	Can J Physiol Pharmacol	WB
Teresa W-M Fan	36150727	J Immunol	
Wei Xu	32935679	Food Funct	WB

## Stockage

Stockage:

Stocker à -20°C. Stable pendant un an après l'expédition.

Tampon de stockage:

PBS avec azoture de sodium à 0,02 % et glycérol à 50 % pH 7,3

L'aliquotage n'est pas nécessaire pour le stockage à -20C

\*\*\* Les 20ul contiennent 0,1% de BSA.

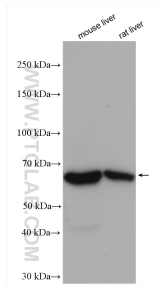
For technical support and original validation data for this product please contact:

T: 1 (888) 4PTGLAB (1-888-478-4522) (toll free in USA), or 1(312) 455-8498 (outside USA)

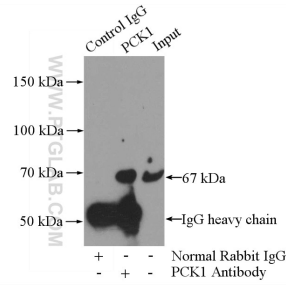
E: proteintech@ptglab.com  
W: ptglab.com

This product is exclusively available under Proteintech Group brand and is not available to purchase from any other manufacturer.

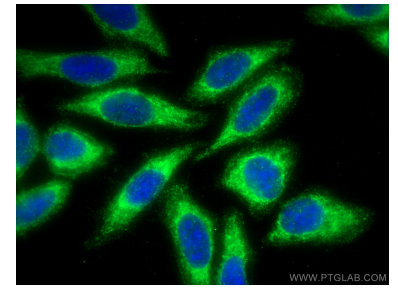
## Données de validation sélectionnées



Various lysates were subjected to SDS PAGE followed by western blot with 16754-1-AP (PCK1 antibody) at dilution of 1:10000 incubated at room temperature for 1.5 hours.



IP Result of anti-PCK1 (IP:16754-1-AP, 4ug; Detection:16754-1-AP 1:500) with HepG2 cells lysate 3600ug.



Immunofluorescent analysis of (-20°C Methanol) fixed HepG2 cells using PCK1 antibody (16754-1-AP) at dilution of 1:400 and CoraLite®488-Conjugated AffiniPure Goat Anti-Rabbit IgG(H+L).