

À des fins de recherche uniquement

Anticorps Polyclonal de lapin anti-GPT2



Numéro de catalogue: 16757-1-AP

Phare

27 Publications

Informations de base

Numéro de catalogue:

16757-1-AP

Taille:

150ul, Concentration: 500 µg/ml by Nanodrop;

Hôte:

Lapin

Isotype:

IgG

Immunogen Catalog Number:

AG10273

Numéro d'acquisition GenBank:

BC062555

Identification du gène (NCBI):

84706

Nom complet:

glutamic pyruvate transaminase (alanine aminotransferase) 2

MW calculé

523 aa, 58 kDa

MW observés:

58 kDa, 47 kDa

Méthode de purification:

Purification par affinité contre l'antigène

Dilutions recommandées:

WB 1:500-1:3000

IP 0.5-4.0 ug for IP and 1:500-1:1000 for WB

IHC 1:50-1:500

IF 1:20-1:200

Applications

Applications testées:

FC, IF, IHC, IP, WB, ELISA

Demandes citées:

IF, IHC, WB

Spécificité de l'espèce:

Humain, rat, souris

Espèces citées:

Humain, souris

Contrôles positifs:

WB : tissu hépatique de souris, cellules HepG2, tissu rénal de souris

IP : tissu rénal de souris,

IHC : tissu de muscle squelettique humain, tissu cérébral de souris

IF : cellules HepG2,

Remarque-IHC: il est suggéré de démasquer l'antigène avec un tampon de TE buffer pH 9,0; (*) À défaut, 'le démasquage de l'antigène peut être 'effectué avec un tampon citrate pH 6,0.

Informations générales

GPT2 (Alanine aminotransferase 2; ALT2) is a key enzyme in intermediary metabolism, catalysing the reversible transfer of the amino group of glutamate to pyruvate, yielding alanine and ketoglutarate. GPT2 protein localizes to mitochondria, and is mainly expressed in the pancreas, brain, adrenal gland, skeletal muscle and heart. Serum GPT2 is a useful marker for liver damage. Recently mutation of GPT2 has been reported to be a cause of neural disorder (27601654). 16757-1-AP antibody recognizes two different isoforms of GPT2 protein.

Publications notables

Autrice	Pubmed ID	Journal	Application
Qing Ouyang	27601654	Proc Natl Acad Sci U S A	WB,IF
Bo Zhang	35499760	Cancer Res	WB
Xiao Zhang	33897873	Theranostics	WB

Stockage

Stockage:

Stocker à -20°C. Stable pendant un an après l'expédition.

Tampon de stockage:

PBS avec azoture de sodium à 0,02 % et glycérol à 50 % pH 7,3

L'aliquotage n'est pas nécessaire pour le stockage à -20C

***** Les 20ul contiennent 0,1% de BSA.**

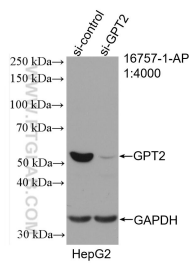
For technical support and original validation data for this product please contact:

T: 1 (888) 4PTGLAB (1-888-478-4522) (toll free in USA), or 1(312) 455-8498 (outside USA)

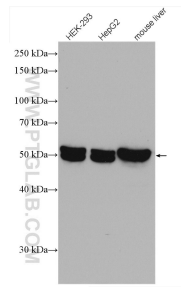
E: proteintech@ptglab.com
W: ptglab.com

This product is exclusively available under Proteintech Group brand and is not available to purchase from any other manufacturer.

Données de validation sélectionnées



WB result of GPT2 antibody (16757-1-AP; 1:4000; incubated at room temperature for 1.5 hours) with sh-Control and sh-GPT2 transfected HepG2 cells.



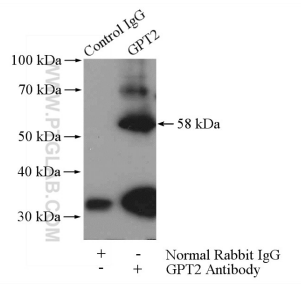
Various lysates were subjected to SDS PAGE followed by western blot with 16757-1-AP (GPT2 antibody) at dilution of 1:1500 incubated at room temperature for 1.5 hours.



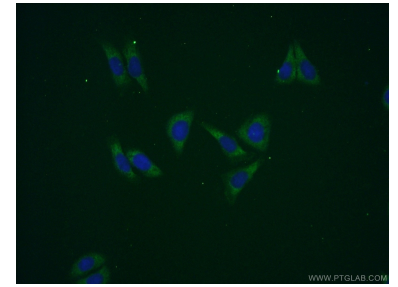
Immunohistochemical analysis of paraffin-embedded human skeletal muscle tissue slide using 16757-1-AP (GPT2 Antibody) at dilution of 1:50 (under 40x lens).



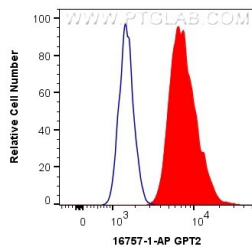
Immunohistochemical analysis of paraffin-embedded human skeletal muscle tissue slide using 16757-1-AP (GPT2 Antibody) at dilution of 1:50 (under 10x lens).



IP Result of anti-GPT2 (IP:16757-1-AP, 4ug; Detection:16757-1-AP 1:500) with mouse kidney tissue lysate 7200ug.



Immunofluorescent analysis of (-20°C Ethanol) fixed HepG2 cells using 16757-1-AP (GPT2 antibody) at dilution of 1:50 and Alexa Fluor 488-conjugated AffiniPure Goat Anti-Rabbit IgG(H+L).



1X10⁶ HepG2 cells were intracellularly stained with 0.4 ug Anti-Human GPT2 (16757-1-AP) and CoraLite®488-Conjugated AffiniPure Goat Anti-Rabbit IgG(H+L) at dilution 1:1000 (red), or 0.4 ug Isotype Control. Cells were fixed with 4% PFA and permeabilized with Flow Cytometry Perm Buffer (PF00011-C).