

À des fins de recherche uniquement

Anticorps Polyclonal de lapin anti-IL-1 Alpha



Numéro de catalogue: 16765-1-AP

29 Publications

Informations de base

Numéro de catalogue:

16765-1-AP

Taille:

150ul, Concentration: 300 µg/ml by Nanodrop;

Hôte:

Lapin

Isotype:

IgG

Immunogen Catalog Number:

AG10339

Numéro d'acquisition GenBank:

BC013142

Identification du gène (NCBI):

3552

Nom complet:

interleukin 1, alpha

MW calculé

271 aa, 31 kDa

MW observés:

30 kDa

Méthode de purification:

Purification par affinité contre l'antigène

Dilutions recommandées:

WB 1:500-1:2000

IF 1:50-1:500

Applications

Applications testées:

IF, WB, ELISA

Demandes citées:

ELISA, IF, IHC, WB

Spécificité de l'espèce:

Humain, souris

Espèces citées:

Humain, rat, souris

Contrôles positifs:

WB : PMA, LPS and Brefeldin A treated THP-1 cells, tissu hépatique de souris, tissu placentaire humain, tissu pulmonaire de souris

IF : cellules RAW 264.7,

Informations générales

Interleukin-1 α (IL-1 Alpha) is a protein that plays a crucial role in the regulation of a number of key cellular processes. IL-1 Alpha is a cytokine and a potent mediator of body's response to inflammation, microbial invasion, tissue injury and immunological response. In addition, recent studies suggest that IL-1 Alpha also has a role in wound healing, rheumatoid arthritis, Alzheimer's disease and tumor growth. IL-1 Alpha functions as an alarmin during the process of sterile inflammation. It serves as a signal from dying cells to potentiate the inflammatory response, increasing the expression of other secreted factors like IL-6 and IL-8. IL-1 Alpha was found to affect the cell cycle of osteosarcoma cell to reduce cell growth. IL-1 Alpha is initially translated as approximately 30-kD polypeptides that are processed to approximately 17.5-kD polypeptides prior to, or during, release from macrophages.

Publications notables

Autrice	Pubmed ID	Journal	Application
Wenlong Zhao	36116152	Int Immunopharmacol	WB
Zhifeng Zhao	33173984	Mol Med Rep	IHC
Nao Kimura	31757582	J Tissue Viability	IHC

Stockage

Stockage:

Stocker à -20°C. Stable pendant un an après l'expédition.

Tampon de stockage:

PBS avec azote de sodium à 0,02 % et glycérol à 50 % pH 7,3

L'aliquotage n'est pas nécessaire pour le stockage à -20C

*** Les 20ul contiennent 0,1% de BSA.

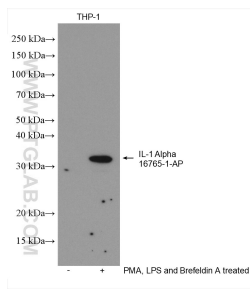
For technical support and original validation data for this product please contact:

T: 1 (888) 4PTGLAB (1-888-478-4522) (toll free in USA), or 1(312) 455-8498 (outside USA)

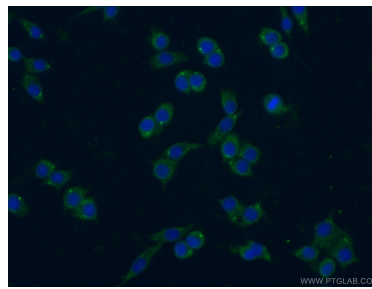
E: proteintech@ptglab.com
W: ptglab.com

This product is exclusively available under Proteintech Group brand and is not available to purchase from any other manufacturer.

Données de validation sélectionnées



Untreated THP-1 cells, THP-1 cells (treated with 50 nM PMA and 5 ug/ml LPS for 24 hours, with addition of 300ng/ml Brefeldin A for the last 3 hours.) were subjected to SDS PAGE followed by western blot with 16765-1-AP (IL-1 Alpha antibody) at dilution of 1:1000 incubated at room temperature for 1.5 hours.



Immunofluorescent analysis of (-20°C Ethanol) fixed RAW 264.7 cells using 16765-1-AP (IL 1 alpha antibody) at dilution of 1:50 and Alexa Fluor 488-conjugated AffiniPure Goat Anti-Rabbit IgG(H+L).