

À des fins de recherche uniquement

# Anticorps Polyclonal de lapin anti-IL-1 Beta



Numéro de catalogue: 16806-1-AP

517 Publications

## Informations de base

Numéro de catalogue: 16806-1-AP	Numéro d'acquisition GenBank: BC008678	Méthode de purification: Purification par affinité contre l'antigène
Taille: 150ul , Concentration: 700 µg/ml by Nanodrop;	Identification du gène (NCBI): 3553	Dilutions recommandées: WB 1:500-1:2000 IHC 1:50-1:500
Hôte: Lapin	Nom complet: interleukin 1, beta	
Isotype: IgG	MW calculé: 269 aa, 31 kDa	
Immunogen Catalog Number: AG10295	MW observés: 30-35 kDa	

## Applications

### Applications testées:

FC, IHC, WB, ELISA

### Demandes citées:

ELISA, IF, IHC, WB

### Spécificité de l'espèce:

Humain

### Espèces citées:

canin, Humain, Lapin, poisson-zèbre, porc

**Remarque-IHC: il est suggéré de démasquer l'antigène avec un tampon de TE buffer pH 9,0; (\*) À défaut, 'le démasquage de l'antigène peut être effectué avec un tampon citrate pH 6,0.**

### Contrôles positifs:

WB : cellules THP-1 traitées au LPS et à l'inhibiteur du transport des protéines, cellules A431, tissu de glande surrénale humaine

IHC : tissu d'amygdale humaine, tissu rénal humain

## Informations générales

Interleukin-1 is a pro-inflammatory cytokine with multiple biological effects. The IL-1 gene family encodes three proteins: IL-1 $\alpha$ , IL-1 $\beta$  and their naturally occurring inhibitor IL-1RN. IL-1 Beta(IL-1 $\beta$ ), mainly produced by blood monocytes and tissue macrophages, has been implicated in mediating both acute and chronic inflammation. IL-1 $\beta$  is known to be involved in a variety of cellular activities, including cell proliferation, differentiation and apoptosis. IL-1 $\beta$  is emerging as a key mediator of carcinogenesis that characterizes host-environment interactions. Human IL-1 $\beta$  is synthesized as a 31 kDa precursor. To gain activity, the precursor must be cleaved by caspase-1 between Asp116 and Ala117 to yield a 17 kDa mature form.

## Publications notables

Autrice	Pubmed ID	Journal	Application
Yangfei Yi	36178080	Orthop Surg	WB
JiangFan Yu	36248980	Front Oncol	WB
Chuyue Zhang	30272163	Hum Reprod	WB

## Stockage

### Stockage:

Stocker à -20°C. Stable pendant un an après l'expédition.

### Tampon de stockage:

PBS avec azoture de sodium à 0,02 % et glycérol à 50 % pH 7,3

L'aliquotage n'est pas nécessaire pour le stockage à -20C

\*\*\* Les 20ul contiennent 0,1% de BSA.

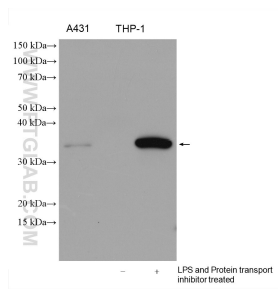
For technical support and original validation data for this product please contact:

T: 1 (888) 4PTGLAB (1-888-478-4522) (toll free in USA), or 1(312) 455-8498 (outside USA)

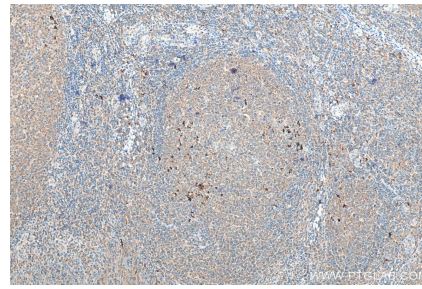
E: proteintech@ptglab.com  
W: ptglab.com

This product is exclusively available under Proteintech Group brand and is not available to purchase from any other manufacturer.

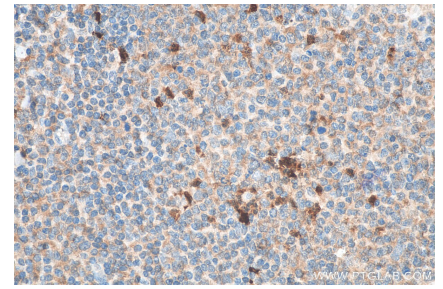
## Données de validation sélectionnées



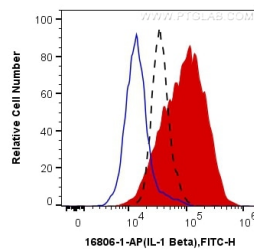
A431 cells, untreated THP-1 cells, THP-1 cells (treated with 100 ng/ml LPS for 3h, then add 300 ng/ml protein transport inhibitor for 3h) were subjected to SDS PAGE followed by western blot with 16806-1-AP (IL-1 Beta antibody) at dilution of 1:1000 incubated at room temperature for 1.5 hours.



Immunohistochemical analysis of paraffin-embedded human tonsillitis tissue slide using 16806-1-AP (IL-1 Beta antibody) at dilution of 1:200 (under 10x lens). Heat mediated antigen retrieval with Tris-EDTA buffer (pH 9.0).



Immunohistochemical analysis of paraffin-embedded human tonsillitis tissue slide using 16806-1-AP (IL-1 Beta antibody) at dilution of 1:200 (under 40x lens). Heat mediated antigen retrieval with Tris-EDTA buffer (pH 9.0).



1X10<sup>6</sup> THP-1 cells untreated (dashed lines), LPS treated (red) were intracellularly stained with 0.4 ug Anti-Human IL-1 Beta (16806-1-AP) and CoraLite®488-Conjugated AffiniPure Goat Anti-Rabbit IgG(H+L) at dilution 1:1000 (red), or 0.4 ug Control Antibody (blue). Cells were fixed with 4% PFA and permeabilized with Flow Cytometry Perm Buffer (PF00011-C).