

À des fins de recherche uniquement

Anticorps Polyclonal de lapin anti-p130Cas



Numéro de catalogue: 16815-1-AP

Informations de base

Numéro de catalogue: 16815-1-AP	Numéro d'acquisition GenBank: BC062556	Méthode de purification: Purification par affinité contre l'antigène
Taille: 150ul, Concentration: 550 µg/ml by Nanodrop and 267 µg/ml by Bradford method using BSA as the standard;	Identification du gène (NCBI): 9564	Dilutions recommandées: WB 1:1000-1:8000 IP 0.5-4.0 ug for IP and 1:500-1:1000 for WB
Hôte: Lapin	Nom complet: breast cancer anti-estrogen resistance 1	IHC 1:50-1:500 IF 1:50-1:500
Isotype: IgG	MW calculé 870 aa, 93 kDa	
Immunogen Catalog Number: AG10354	MW observés: 116 kDa	

Applications

Applications testées:
FC, IF, IHC, IP, WB, ELISA

Spécificité de l'espèce:
Humain, rat, souris

Remarque-IHC: il est suggéré de démasquer l'antigène avec un tampon de TE buffer pH 9.0; (*) À défaut, le démasquage de l'antigène peut être effectué avec un tampon citrate pH 6.0.

Contrôles positifs:

WB : cellules HeLa, cellules A431, cellules HepG2, cellules T-47D

IP : cellules RAW 264.7,

IHC : tissu de cancer du côlon humain,

IF : cellules HeLa,

Informations générales

Stockage

Stockage:
Stocker à -20°C. Stable pendant un an après l'expédition.
Tampon de stockage:
PBS avec azoture de sodium à 0,02 % et glycérol à 50 % pH 7,3
L'aliquotage n'est pas nécessaire pour le stockage à -20C

***** Les 20ul contiennent 0,1% de BSA.**

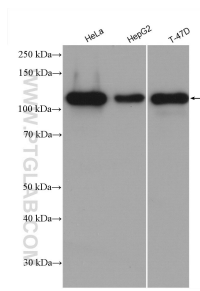
For technical support and original validation data for this product please contact:

T: 1 (888) 4PTGLAB (1-888-478-4522) (toll free in USA), or 1(312) 455-8498 (outside USA)

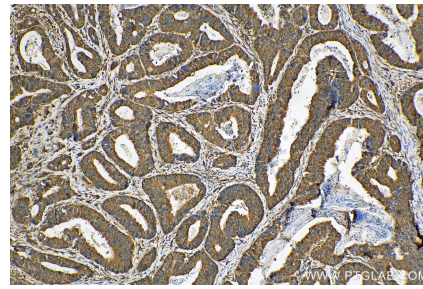
E: proteintech@ptglab.com
W: ptglab.com

This product is exclusively available under Proteintech Group brand and is not available to purchase from any other manufacturer.

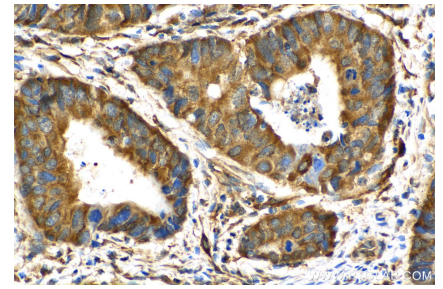
Données de validation sélectionnées



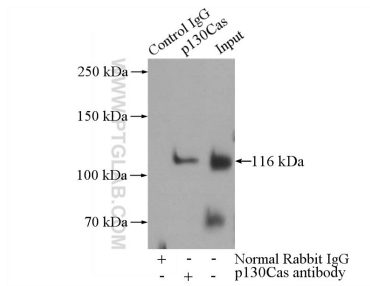
Various lysates were subjected to SDS PAGE followed by western blot with 16815-1-AP (p130Cas antibody) at dilution of 1:4000 incubated at room temperature for 1.5 hours.



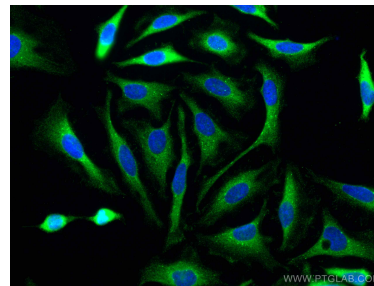
Immunohistochemical analysis of paraffin-embedded human colon cancer tissue slide using 16815-1-AP (p130Cas antibody) at dilution of 1:200 (under 10x lens). Heat mediated antigen retrieval with Tris-EDTA buffer (pH 9.0).



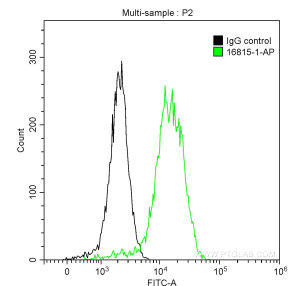
Immunohistochemical analysis of paraffin-embedded human colon cancer tissue slide using 16815-1-AP (p130Cas antibody) at dilution of 1:200 (under 40x lens). Heat mediated antigen retrieval with Tris-EDTA buffer (pH 9.0).



IP Result of anti-p130Cas (IP:16815-1-AP, 4ug; Detection:16815-1-AP 1:600) with RAW 264.7 cells lysate 4000ug.



Immunofluorescent analysis of (-20°C Methanol) fixed HeLa cells using p130Cas antibody (16815-1-AP) at dilution of 1:200 and CoraLite@488-Conjugated AffiniPure Goat Anti-Rabbit IgG(H+L).



1×10^6 A431 cells were stained with 0.2 ug Anti-Human p130Cas (16815-1-AP) and CoraLite@488-Conjugated AffiniPure Goat Anti-Rabbit IgG(H+L) at dilution 1:1000 (green), or stained with 0.2 ug isotype control and CoraLite@488-Conjugated AffiniPure Goat Anti-Rabbit IgG(H+L) at dilution 1:1000 (black). Cells were fixed with 90% MeOH.