

À des fins de recherche uniquement

Anticorps Polyclonal de lapin anti-EED



Numéro de catalogue: 16818-1-AP

15 Publications

Informations de base

Numéro de catalogue:

16818-1-AP

Taille:

150ul, Concentration: 500 µg/ml by Nanodrop and 267 µg/ml by Bradford method using BSA as the standard;

Hôte:

Lapin

Isotype:

IgG

Immunogen Catalog Number:

AG10358

Numéro d'acquisition GenBank:

BC068995

Identification du gène (NCBI):

8726

Nom complet:

embryonic ectoderm development

MW calculé

466 aa, 53 kDa

MW observés:

53 kDa

Méthode de purification:

Purification par affinité contre l'antigène

Dilutions recommandées:

WB 1:500-1:2000

IP 0.5-4.0 ug for IP and 1:500-1:1000 for WB

IHC 1:50-1:500

IF 1:50-1:500

Applications

Applications testées:

FC, IF, IHC, IP, WB, ELISA

Demandes citées:

IP, WB

Spécificité de l'espèce:

Humain

Espèces citées:

Humain, rat, souris

Remarque-IHC: il est suggéré de démasquer l'antigène avec un tampon de TE buffer pH 9,0; (*) À défaut, 'le démasquage de l'antigène peut être 'effectué avec un tampon citrate pH 6,0.

Contrôles positifs:

WB : cellules COLO 320, cellules A431, cellules HeLa, cellules HepG2, cellules K-562, cellules PC-3

IP : cellules PC-3,

IHC : tissu d'amygdalite humain,

IF : cellules HepG2, cellules HeLa

Informations générales

EED is a member of the Polycomb-group (PcG) family. PcG family members form multimeric protein complexes, which are involved in maintaining the transcriptional repressive state of genes over successive cell generations. This protein interacts with enhancer of zeste 2, the cytoplasmic tail of integrin beta7, immunodeficiency virus type 1 (HIV-1) MA protein, and histone deacetylase proteins. This protein mediates repression of gene activity through histone deacetylation, and may act as a specific regulator of integrin function. EED has three isoforms, with the molecular weight of isoforms 1/2/3: 50/53/46 kDa.

Publications notables

Autrice	Pubmed ID	Journal	Application
Yixuan Wang	36165414	Br J Pharmacol	WB,IP
Masamitsu N Asaka	27646999	Sci Rep	WB
Xiaozhen Gu	31511494	Cell Death Dis	WB

Stockage

Stockage:

Stocker à -20°C. Stable pendant un an après l'expédition.

Tampon de stockage:

PBS avec azoture de sodium à 0,02 % et glycérol à 50 % pH 7,3

L'aliquotage n'est pas nécessaire pour le stockage à -20C

*** Les 20ul contiennent 0,1% de BSA.

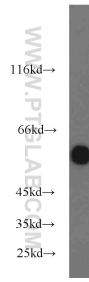
For technical support and original validation data for this product please contact:

T: 1 (888) 4PTGLAB (1-888-478-4522) (toll free in USA), or 1(312) 455-8498 (outside USA)

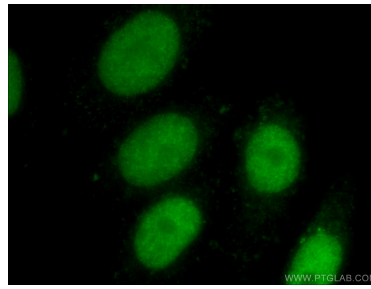
E: proteintech@ptglab.com
W: ptglab.com

This product is exclusively available under Proteintech Group brand and is not available to purchase from any other manufacturer.

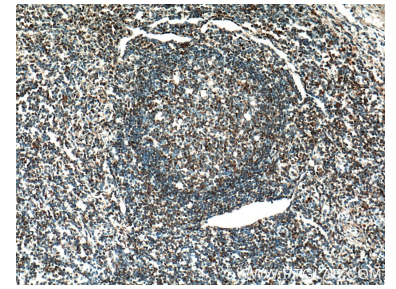
Données de validation sélectionnées



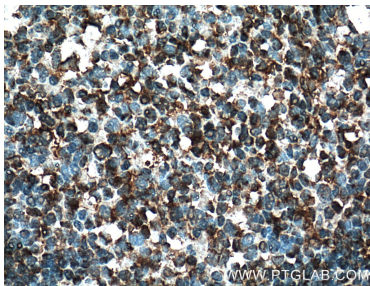
COLO 320 cells were subjected to SDS PAGE followed by western blot with 16818-1-AP (EED antibody) at dilution of 1:1000 incubated at room temperature for 1.5 hours.



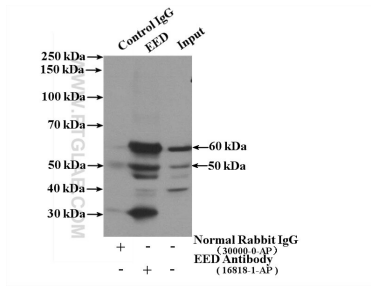
Immunofluorescent analysis of (10% Formalin) fixed HepG2 cells using 16818-1-AP (EED antibody) at dilution of 1:50 and Alexa Fluor 488-conjugated AffiniPure Goat Anti-Rabbit IgG(H+L).



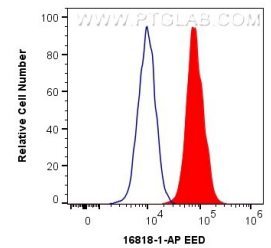
Immunohistochemical analysis of paraffin-embedded human tonsillitis tissue slide using 16818-1-AP (EED Antibody) at dilution of 1:200 (under 10x lens). Heat mediated antigen retrieval with Tris-EDTA buffer (pH 9.0).



Immunohistochemical analysis of paraffin-embedded human tonsillitis tissue slide using 16818-1-AP (EED Antibody) at dilution of 1:200 (under 40x lens). Heat mediated antigen retrieval with Tris-EDTA buffer (pH 9.0).



IP Result of anti-EED (IP:16818-1-AP, 4µg; Detection:16818-1-AP 1:500) with PC-3 cells lysate 3200µg.



1×10^6 HepG2 cells were intracellularly stained with 0.4 µg Anti-Human EED (16818-1-AP) and CoraLite®488-Conjugated AffiniPure Goat Anti-Rabbit IgG(H+L) at dilution 1:1000 (red), or 0.4 µg Isotype Control. Cells were fixed and permeabilized with Transcription Factor Staining Buffer Kit (PF00011).