

À des fins de recherche uniquement

Anticorps Polyclonal de lapin anti-SRF



Numéro de catalogue: 16821-1-AP

Phare

12 Publications

Informations de base

Numéro de catalogue:

16821-1-AP

Taille:

150ul, Concentration: 600 µg/ml by Nanodrop and 333 µg/ml by Bradford method using BSA as the standard;

Hôte:

Lapin

Isotype:

IgG

Immunogen Catalog Number:

AG10386

Numéro d'acquisition GenBank:

BC048211

Identification du gène (NCBI):

6722

Nom complet:

serum response factor (c-fos serum response element-binding transcription factor)

MW calculé

508 aa, 52 kDa

MW observés:

65-70 kDa, 40 kDa

Méthode de purification:

Purification par affinité contre l'antigène

Dilutions recommandées:

WB 1:1000-1:6000

IP 0.5-4.0 ug for IP and 1:500-1:2000 for WB

IHC 1:20-1:200

IF 1:50-1:500

Applications

Applications testées:

IF, IHC, IP, WB, ELISA

Demandes citées:

ChIP, IF, IHC, WB

Spécificité de l'espèce:

Humain

Espèces citées:

Humain, rat, souris

Remarque-IHC: il est suggéré de démasquer l'antigène avec un tampon de TE buffer pH 9.0; (*) A défaut, 'le démasquage de l'antigène peut être 'effectué avec un tampon citrate pH 6,0.

Contrôles positifs:

WB: cellules A431, cellules HEK-293, cellules HeLa, cellules K-562, cellules MCF-7, cellules NIH/3T3

IP: cellules HeLa,

IHC: tissu cérébral humain,

IF: cellules HeLa,

Informations générales

Serum response factor (SRF) is a transcription factor that binds the serum response element (SRE), a sequence that mediates the transient response of many cellular genes to growth stimulation. SRF is required for cardiac differentiation and maturation due to the role in cardiac cell growth and muscle gene regulation. The full-length SRF protein is 67 kDa and molecular weight of cleaved fragment is 50 kDa and 20 kDa (PMID: 21769134).

Publications notables

Autrice	Pubmed ID	Journal	Application
Chen-Qian Zhao	36260290	Inhal Toxicol	IF
Li Zhang	30463073	Cell Physiol Biochem	WB
Xiaogao Wang	34093747	Exp Ther Med	WB,IF

Stockage

Stockage:

Stocker à -20°C. Stable pendant un an après l'expédition.

Tampon de stockage:

PBS avec azoture de sodium à 0,02 % et glycérol à 50 % pH 7,3

L'aliquotage n'est pas nécessaire pour le stockage à -20C

*** Les 20ul contiennent 0,1% de BSA.

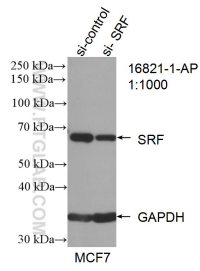
For technical support and original validation data for this product please contact:

T: 1 (888) 4PTGLAB (1-888-478-4522) (toll free in USA), or 1(312) 455-8498 (outside USA)

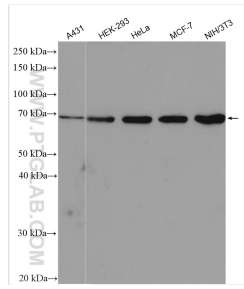
E: proteintech@ptglab.com
W: ptglab.com

This product is exclusively available under Proteintech Group brand and is not available to purchase from any other manufacturer.

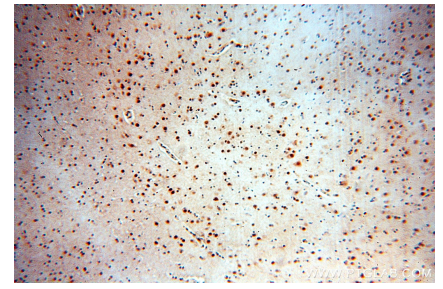
Données de validation sélectionnées



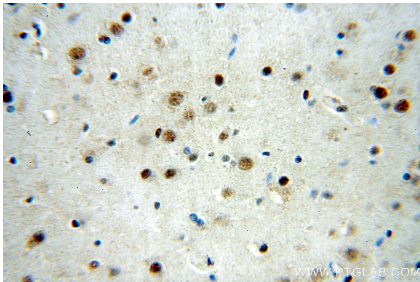
WB result of SRF antibody (16821-1-AP; 1:1000; incubated at room temperature for 1.5 hours) with sh-Control and sh-SRF transfected MCF-7 cells.



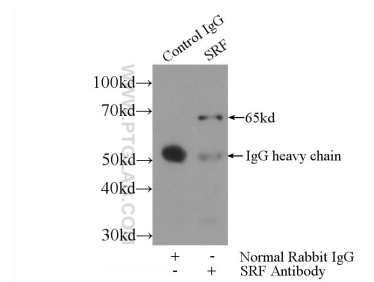
Various lysates were subjected to SDS PAGE followed by western blot with 16821-1-AP (SRF antibody) at dilution of 1:3000 incubated at room temperature for 1.5 hours.



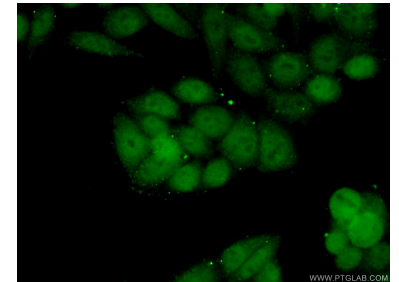
Immunohistochemical analysis of paraffin-embedded human brain using 16821-1-AP (SRF antibody) at dilution of 1:50 (under 10x lens).



Immunohistochemical analysis of paraffin-embedded human brain using 16821-1-AP (SRF antibody) at dilution of 1:50 (under 40x lens).



IP Result of anti-SRF (IP:16821-1-AP, 3ug; Detection:16821-1-AP 1:1000) with HeLa cells lysate 3000ug.



Immunofluorescent analysis of (10% Formaldehyde) fixed HeLa cells using 16821-1-AP (SRF antibody) at dilution of 1:50 and Alexa Fluor 488-conjugated AffiniPure Goat Anti-Rabbit IgG(H+L).