

À des fins de recherche uniquement

Anticorps Polyclonal de lapin anti-NIP7



Numéro de catalogue: 16839-1-AP

Informations de base

Numéro de catalogue:
16839-1-AP

Taille:
150ul, Concentration: 500 µg/ml by
Nanodrop and 333 µg/ml by Bradford
method using BSA as the standard;

Hôte:
Lapin

Isotype:
IgG

Immunogen Catalog Number:
AG10526

Numéro d'acquisition GenBank:
BC015941

Identification du gène (NCBI):
51388

Nom complet:
nuclear import 7 homolog (S.
cerevisiae)

MW calculé
180 aa, 20 kDa

MW observés:
20-22 kDa

Méthode de purification:
Purification par affinité contre
l'antigène

Dilutions recommandées:
WB 1:500-1:3000
IP 0.5-4.0 ug for IP and 1:500-1:1000
for WB

Applications

Applications testées:
IP, WB, ELISA

Spécificité de l'espèce:
Humain, rat, souris

Contrôles positifs:

WB : cellules HeLa, cellules HepG2

IP : tissu hépatique de souris,

Informations générales

Nip7 was initially identified in yeast as required for processing of the 27S pre-rRNA to form the mature 25S and 5.8S rRNAs (PMID: 9891085). It localizes to the nucleolus but was also found to sediment in the region of free 60S subunits in sucrose density gradients (PMID: 9891085). Experimental evidence suggests that the P. abyssi Nip7 may be an exosome regulatory factor. It binds preferentially to U- and AU-rich RNAs and strongly inhibits the exosome due to its association with both the exosome complex and the substrate RNA.

Stockage

Stockage:

Stocker à -20°C. Stable pendant un an après l'expédition.

Tampon de stockage:

PBS avec azoture de sodium à 0,02 % et glycérol à 50 % pH 7,3

L'aliquotage n'est pas nécessaire pour le stockage à -20C

*** Les 20ul contiennent 0,1% de BSA.

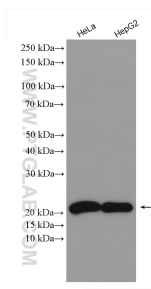
For technical support and original validation data for this product please contact:

T: 1 (888) 4PTGLAB (1-888-478-4522) (toll free
in USA), or 1(312) 455-8498 (outside USA)

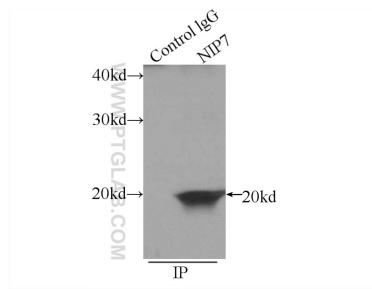
E: proteintech@ptglab.com
W: ptglab.com

This product is exclusively available under Proteintech Group brand and is not available to purchase from any other manufacturer.

Données de validation sélectionnées



Various lysates were subjected to SDS PAGE followed by western blot with 16839-1-AP (NIP7 antibody) at dilution of 1:1500 incubated at room temperature for 1.5 hours.



IP Result of anti-NIP7 (IP:16839-1-AP, 3ug; Detection:16839-1-AP 1:500) with mouse liver tissue lysate 4000ug.