

À des fins de recherche uniquement

Anticorps Polyclonal de lapin anti-Apolipoprotein A II



Numéro de catalogue: 16845-1-AP

3 Publications

Informations de base

Numéro de catalogue:

16845-1-AP

Taille:

150ul, Concentration: 600 µg/ml by Nanodrop and 333 µg/ml by Bradford method using BSA as the standard;

Hôte:

Lapin

Isotype:

IgG

Immunogen Catalog Number:

AG9863

Numéro d'acquisition GenBank:

BC005282

Identification du gène (NCBI):

336

Nom complet:

apolipoprotein A-II

MW calculé

100 aa, 11 kDa

MW observés:

7-9 kDa (monomer), 15 kDa (dimer)

Méthode de purification:

Purification par affinité contre l'antigène

Dilutions recommandées:

WB 1:500-1:2000

IP 0.5-4.0 ug par IP and 1:500-1:1000 for WB

IHC 1:50-1:500

IF 1:50-1:500

Applications

Applications testées:

IF, IHC, IP, WB, ELISA

Demandes citées:

WB

Spécificité de l'espèce:

Humain

Espèces citées:

Humain, souris

Remarque-IHC: il est suggéré de démasquer l'antigène avec un tampon de TE buffer pH 9.0; (*) A défaut, le démasquage de l'antigène peut être effectué avec un tampon citrate pH 6,0.

Contrôles positifs:

WB : tissu plasmatique humain,

IP : tissu plasmatique humain,

IHC : tissu hépatique humain, tissu de cirrhose hépatique humain

IF : cellules HepG2,

Informations générales

Apolipoprotein A-II (APOA2) is a major component of high density lipoprotein (HDL) and it plays an important role in directing the fate of lipid metabolism among HDL. It is primarily synthesized by liver. The predicted MW of ApoA2 is 11 kDa, while the mature form is smaller (7-10 kDa) since the signal peptide was cleaved. In humans, most of circulating apoA2 exist as dimer. Five types of APOA2 dimer exist: homodimer apoA2-ATQ/ATQ, heterodimer apoA2-ATQ/AT, homodimer apoA2-AT/AT, apoA2-AT/A, and apoA2-A/A. ApoA2 isoforms are considered to be some of the most promising serum/plasma biomarkers for aiding the early detection of pancreatic cancer. (PMID: 29081441, 29481802)

Publications notables

Autrice	Pubmed ID	Journal	Application
Zhonghao Li	36498935	Int J Mol Sci	WB
Yanying Wang	34728628	Nat Commun	WB
Jun-Jun Qiu	31911152	Exp Cell Res	WB

Stockage

Stockage:

Stocker à -20°C. Stable pendant un an après l'expédition.

Tampon de stockage:

PBS avec azoture de sodium à 0,02 % et glycérol à 50 % pH 7,3

L'aliquotage n'est pas nécessaire pour le stockage à -20C

*** Les 20ul contiennent 0,1% de BSA.

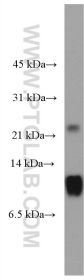
For technical support and original validation data for this product please contact:

T: 1 (888) 4PTGLAB (1-888-478-4522) (toll free in USA), or 1(312) 455-8498 (outside USA)

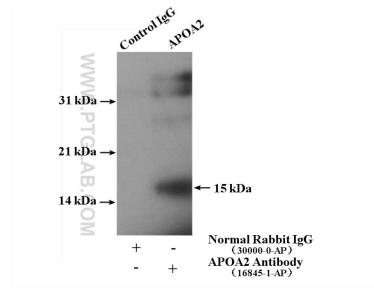
E: proteintech@ptglab.com
W: ptglab.com

This product is exclusively available under Proteintech Group brand and is not available to purchase from any other manufacturer.

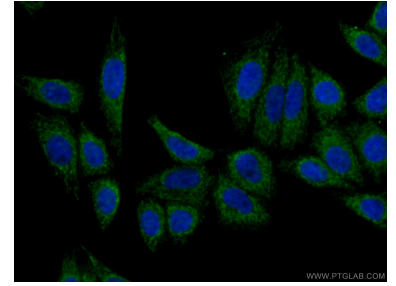
Données de validation sélectionnées



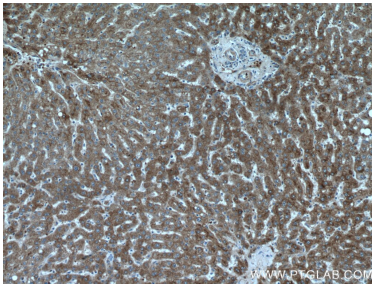
human plasma were subjected to SDS PAGE followed by western blot with 16845-1-AP (Apolipoprotein A II antibody) at dilution of 1:1000 incubated at room temperature for 1.5 hours.



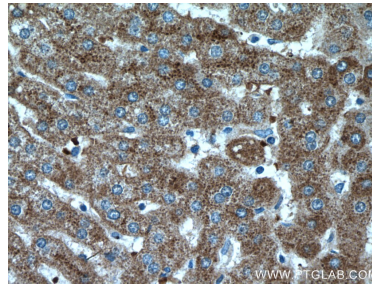
IP result of anti-Apolipoprotein A II (IP:16845-1-AP, 4ug; Detection:16845-1-AP 1:500) with human plasma lysate 4000 ug.



Immunofluorescent analysis of (4% PFA) fixed HepG2 cells using 16845-1-AP (Apolipoprotein A II antibody) at dilution of 1:50 and CoraLite488-Conjugated AffiniPure Goat Anti-Rabbit IgG(H+L).



Immunohistochemical analysis of paraffin-embedded human liver tissue slide using 16845-1-AP (Apolipoprotein A II antibody) at dilution of 1:200 (under 10x lens).



Immunohistochemical analysis of paraffin-embedded human liver tissue slide using 16845-1-AP (Apolipoprotein A II antibody) at dilution of 1:200 (under 40x lens).