

À des fins de recherche uniquement

Anticorps Polyclonal de lapin anti-GPX8



Numéro de catalogue: 16846-1-AP

4 Publications

Informations de base

Numéro de catalogue:

16846-1-AP

Taille:

150ul, Concentration: 600 µg/ml by Nanodrop and 400 µg/ml by Bradford method using BSA as the standard;

Hôte:

Lapin

Isotype:

IgG

Immunogen Catalog Number:

AG9930

Numéro d'acquisition GenBank:

BC029424

Identification du gène (NCBI):

493869

Nom complet:

glutathione peroxidase 8 (putative)

MW calculé

209 aa, 24 kDa

MW observés:

24 kDa

Méthode de purification:

Purification par affinité contre l'antigène

Dilutions recommandées:

WB 1:500-1:1000

IP 0.5-4.0 ug for IP and 1:200-1:1000 for WB

IHC 1:50-1:500

Applications

Applications testées:

IHC, IP, WB, ELISA

Demandes citées:

IF, IHC, WB

Spécificité de l'espèce:

Humain, rat, souris

Espèces citées:

Humain, rat

Remarque-IHC: il est suggéré de démasquer l'antigène avec un tampon de TE buffer pH 9,0; (*) À défaut, 'le démasquage de l'antigène peut être effectué avec un tampon citrate pH 6,0.

Contrôles positifs:

WB: cellules U-251, cellules HEK-293

IP: cellules HEK-293,

IHC: tissu de cancer de l'estomac humain,

Informations générales

GPX8 (Probable glutathione peroxidase 8) is also named as GSHPx-8 and belongs to the glutathione peroxidase family. Glutathione peroxidase (GPx) reduces hydroperoxides, including hydrogen peroxides, in the presence of reduced glutathione as a means of protecting organisms from oxidative damage. Several GPx isozymes have been identified in animal cells and these have been classified into different groups according to their cellular location and substrate specificity. In humans, eight types of GPx have been identified from GPx1 to GPx8. The full length GPX8 has 209 amino acids and the molecular weight is 24 kDa.

Publications notables

Autrice	Pubmed ID	Journal	Application
Ilir Mehmeti	28751022	Free Radic Biol Med	WB, IF
Sarah Sharifi	36468845	FASEB J	WB
Andriana Pavliuk-Karachevtseva	35208621	Medicina (Kaunas)	IHC

Stockage

Stockage:

Stocker à -20°C. Stable pendant un an après l'expédition.

Tampon de stockage:

PBS avec azoture de sodium à 0,02 % et glycérol à 50 % pH 7,3

L'aliquotage n'est pas nécessaire pour le stockage à -20C

*** Les 20ul contiennent 0,1% de BSA.

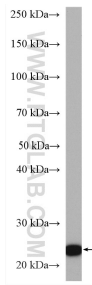
For technical support and original validation data for this product please contact:

T: 1 (888) 4PTGLAB (1-888-478-4522) (toll free in USA), or 1(312) 455-8498 (outside USA)

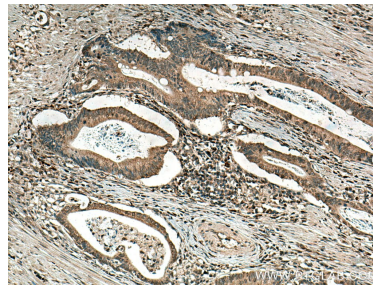
E: proteintech@ptglab.com
W: ptglab.com

This product is exclusively available under Proteintech Group brand and is not available to purchase from any other manufacturer.

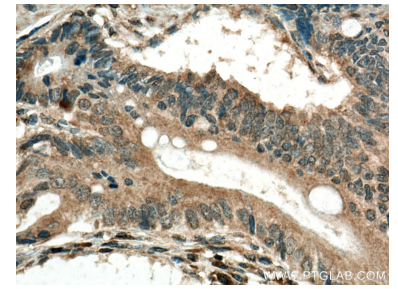
Données de validation sélectionnées



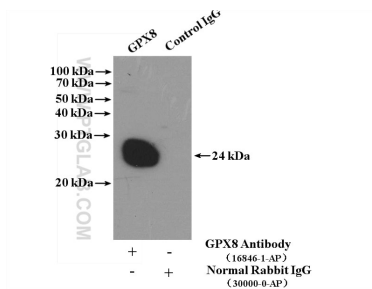
U-251 cells were subjected to SDS PAGE followed by western blot with 16846-1-AP (GPX8 antibody) at dilution of 1:600 incubated at room temperature for 1.5 hours.



Immunohistochemical analysis of paraffin-embedded human stomach cancer tissue slide using 16846-1-AP (GPX8 antibody) at dilution of 1:200 (under 10x lens). Heat mediated antigen retrieval with Tris-EDTA buffer (pH 9.0).



Immunohistochemical analysis of paraffin-embedded human stomach cancer tissue slide using 16846-1-AP (GPX8 antibody) at dilution of 1:200 (under 40x lens). Heat mediated antigen retrieval with Tris-EDTA buffer (pH 9.0).



IP Result of anti-GPX8 (IP:16846-1-AP, 4ug;
Detection:16846-1-AP 1:300) with HEK-293 cells
lysate 3000ug.