

À des fins de recherche uniquement

Anticorps Polyclonal de lapin anti-Cytokeratin 1-specific



Numéro de catalogue: 16848-1-AP

13 Publications

Informations de base

Numéro de catalogue:

16848-1-AP

Taille:

150ul, Concentration: 900 µg/ml by Nanodrop;

Hôte:

Lapin

Isotype:

IgG

Numéro d'acquisition GenBank:

NM_006121

Identification du gène (NCBI):

3848

Nom complet:

keratin 1

MW calculé

66 kDa

MW observés:

67 kDa

Méthode de purification:

Purification par affinité contre l'antigène

Dilutions recommandées:

WB 1:500-1:2000

IP 0.5-4.0 µg for IP and 1:500-1:1000 for WB

IHC 1:20-1:200

IF 1:20-1:200

Applications

Applications testées:

IF, IHC, IP, WB, ELISA

Demandes citées:

IF, IHC, WB

Spécificité de l'espèce:

Humain, rat, souris

Espèces citées:

Chèvre, Humain, rat, souris

Contrôles positifs:

WB : tissu cutané de rat, peau de souris

IP : cellules A431,

IHC : tissu cutané humain, tissu de cancer du poumon humain

IF : cellules A431,

Remarque-IHC: il est suggéré de démasquer l'antigène avec un tampon de TE buffer pH 9,0; (*) À défaut, le démasquage de l'antigène peut être effectué avec un tampon citrate pH 6,0.

Informations générales

Keratins are a large family of proteins that form the intermediate filament cytoskeleton of epithelial cells, which are classified into two major sequence types. Type I keratins are a group of acidic intermediate filament proteins, including K9-K23, and the hair keratins Ha1-Ha8. Type II keratins are the basic or neutral counterparts to the acidic type I keratins, including K1-K8, and the hair keratins, Hb1-Hb6. Keratin-1 is type II keratin. It is a specific marker for terminal differentiation in mammalian epidermis. It is specifically expressed in the spinous and granular layers of the epidermis with family member KRT10 and mutations in these genes have been associated with bullous congenital ichthyosiform erythroderma. This antibody is specifically against keratin I.

Publications notables

Autrice	Pubmed ID	Journal	Application
Yanyun Wang	34687431	Hum Cell	IHC, IF
Shidi Wu	31790685	Life Sci	IHC
Jie Zhang	34060533	Front Endocrinol (Lausanne)	WB

Stockage

Stockage:

Stocker à -20°C. Stable pendant un an après l'expédition.

Tampon de stockage:

PBS avec azoture de sodium à 0,02 % et glycérol à 50 % pH 7,3

L'aliquotage n'est pas nécessaire pour le stockage à -20C

*** Les 20ul contiennent 0,1% de BSA.

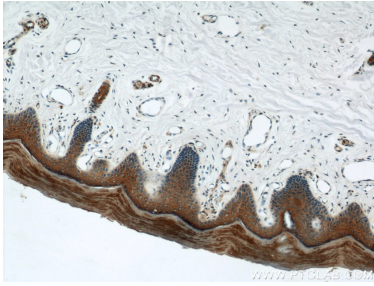
For technical support and original validation data for this product please contact:

T: 1 (888) 4PTGLAB (1-888-478-4522) (toll free in USA), or 1(312) 455-8498 (outside USA)

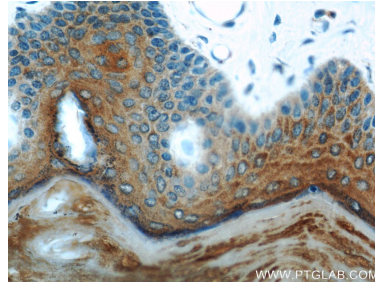
E: proteintech@ptglab.com
W: ptglab.com

This product is exclusively available under Proteintech Group brand and is not available to purchase from any other manufacturer.

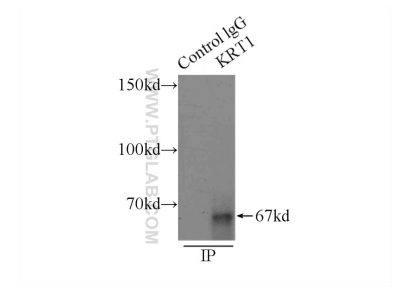
Données de validation sélectionnées



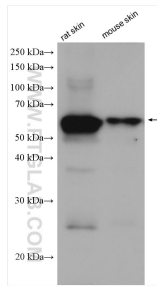
Immunohistochemical analysis of paraffin-embedded human skin using 16848-1-AP (Cytokeratin 1-specific antibody) at dilution of 1:100 (under 10x lens).



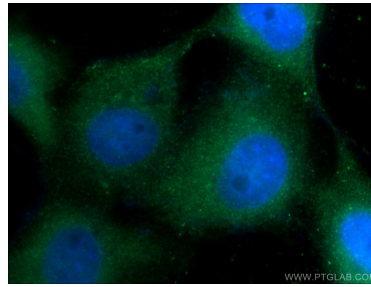
Immunohistochemical analysis of paraffin-embedded human skin using 16848-1-AP (Cytokeratin 1-specific antibody) at dilution of 1:100 (under 40x lens).



IP Result of anti-Cytokeratin 1-specific (IP:16848-1-AP, 3ug; Detection:16848-1-AP 1:500) with A431 cells lysate 3500ug.



Various lysates were subjected to SDS PAGE followed by western blot with 16848-1-AP (Cytokeratin 1-specific antibody) at dilution of 1:1000 incubated at room temperature for 1.5 hours.



Immunofluorescent analysis of A431 cells using 16848-1-AP (Cytokeratin 1-specific antibody) at dilution of 1:50 and Alexa Fluor 488-conjugated AffiniPure Goat Anti-Rabbit IgG(H+L).