

À des fins de recherche uniquement

Anticorps Polyclonal de lapin anti-Cytokeratin 6A-specific



Numéro de catalogue: 16853-1-AP

Informations de base

Numéro de catalogue:

16853-1-AP

Taille:

150ul, Concentration: 400 µg/ml by Nanodrop and 373 µg/ml by Bradford method using BSA as the standard;

Hôte:

Lapin

Isotype:

IgG

Numéro d'acquisition GenBank:

NM_005554

Identification du gène (NCBI):

3853

Nom complet:

keratin 6A

MW calculé

60 kDa

MW observés:

56 kDa

Méthode de purification:

Purification par affinité contre l'antigène

Dilutions recommandées:

WB 1:500-1:1000

IP 0.5-4.0 µg for IP and 1:200-1:1000 for WB

Applications

Applications testées:

IP, WB, ELISA

Spécificité de l'espèce:

Humain, souris

Contrôles positifs:

WB : cellules A431, cellules HeLa, tissu cutané de souris, tissu salivaire humain

IP : cellules HeLa,

Informations générales

Keratins are a large family of proteins that form the intermediate filament cytoskeleton of epithelial cells, which are classified into two major sequence types. Type I keratins are a group of acidic intermediate filament proteins, including K9-K23, and the hair keratins Ha1-Ha8. Type II keratins are the basic or neutral counterparts to the acidic type I keratins, including K1-K8, and the hair keratins, Hb1-Hb6. Keratin 6 is a type II keratin. It is used as marker for epidermal hyperproliferation and differentiation. Three keratin 6 isoforms were found, keratin 6A, 6B and 6C. They share more than 99% identical DNA sequence. This antibody is against all three isoforms of keratin 6, but it does not bind other keratins.

Stockage

Stockage:

Stocker à -20°C. Stable pendant un an après l'expédition.

Tampon de stockage:

PBS avec azote de sodium à 0,02 % et glycérol à 50 % pH 7,3

L'aliquotage n'est pas nécessaire pour le stockage à -20°C

*** Les 20ul contiennent 0,1% de BSA.

For technical support and original validation data for this product please contact:

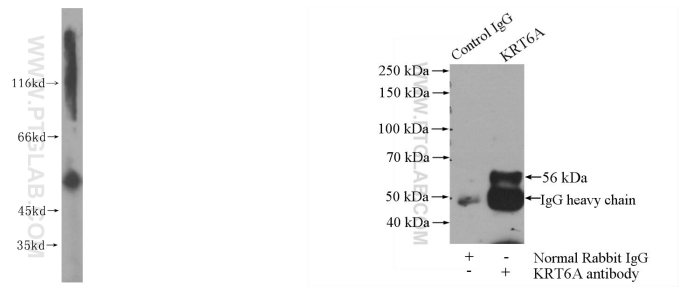
T: 1 (888) 4PTGLAB (1-888-478-4522) (toll free in USA), or 1(312) 455-8498 (outside USA)

E: proteintech@ptglab.com

W: ptglab.com

This product is exclusively available under Proteintech Group brand and is not available to purchase from any other manufacturer.

Données de validation sélectionnées



A431 cells were subjected to SDS PAGE followed by western blot with 16853-1-AP (Cytokeratin 6A-specific antibody) at dilution of 1:300 incubated at room temperature for 1.5 hours.

IP Result of anti-Cytokeratin 6A-specific (IP:16853-1-AP, 4ug; Detection:16853-1-AP 1:300) with HeLa cells lysate 520ug.