

À des fins de recherche uniquement

# Anticorps Polyclonal de lapin anti-Cytokeratin 10-specific



Numéro de catalogue: 16855-1-AP

## Informations de base

<b>Numéro de catalogue:</b> 16855-1-AP	<b>Numéro d'acquisition GenBank:</b> NM_000421	<b>Méthode de purification:</b> Purification par affinité contre l'antigène
<b>Taille:</b> 150ul, Concentration: 550 µg/ml by Nanodrop and 333 µg/ml by Bradford method using BSA as the standard;	<b>Identification du gène (NCBI):</b> 3858	<b>Dilutions recommandées:</b> IHC 1:50-1:500
<b>Hôte:</b> Lapin	<b>Nom complet:</b> keratin 10	
<b>Isotype:</b> IgG	<b>MW calculé:</b> 59 kDa	

## Applications

<b>Applications testées:</b> FC, IHC, ELISA	<b>Contrôles positifs:</b> IHC : tissu de cancer de la peau humain, tissu de cancer du sein humain
<b>Spécificité de l'espèce:</b> Humain	

**Remarque-IHC: il est suggéré de démasquer l'antigène avec un tampon de TE buffer pH 9,0; (\*) À défaut, le démasquage de l'antigène peut être effectué avec un tampon citrate pH 6,0.**

## Informations générales

Keratins are a large family of proteins that form the intermediate filament cytoskeleton of epithelial cells, which are classified into two major sequence types. Type I keratins are a group of acidic intermediate filament proteins, including K9-K23, and the hair keratins Ha1-Ha8. Type II keratins are the basic or neutral counterparts to the acidic type I keratins, including K1-K8, and the hair keratins, Hb1-Hb6. As a type I keratin, keratin 10 is a suprabasal marker of differentiation in stratified squamous epithelia. This antibody is specifically against KRT10.

## Stockage

**Stockage:**  
Stocker à -20°C. Stable pendant un an après l'expédition.  
**Tampon de stockage:**  
PBS avec azoture de sodium à 0,02 % et glycérol à 50 % pH 7,3  
L'aliquotage n'est pas nécessaire pour le stockage à -20C

\*\*\* Les 20ul contiennent 0,1% de BSA.

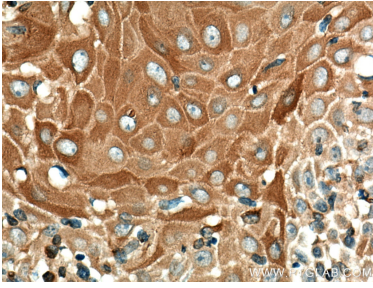
For technical support and original validation data for this product please contact:

T: 1 (888) 4PTGLAB (1-888-478-4522) (toll free in USA), or 1(312) 455-8498 (outside USA)

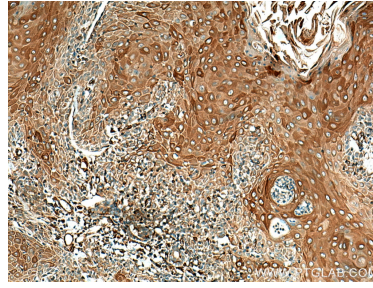
E: [proteintech@ptglab.com](mailto:proteintech@ptglab.com)  
W: [ptglab.com](http://ptglab.com)

This product is exclusively available under Proteintech Group brand and is not available to purchase from any other manufacturer.

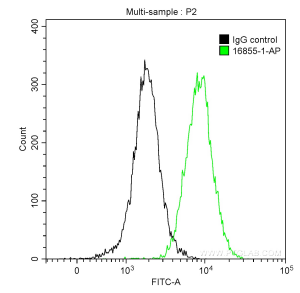
## Données de validation sélectionnées



Immunohistochemical analysis of paraffin-embedded human skin cancer tissue slide using 16855-1-AP (Cytokeratin 10-specific antibody) at dilution of 1:200 (under 40x lens). Heat mediated antigen retrieval with Tris-EDTA buffer (pH 9.0).



Immunohistochemical analysis of paraffin-embedded human skin cancer tissue slide using 16855-1-AP (Cytokeratin 10-specific antibody) at dilution of 1:200 (under 10x lens). Heat mediated antigen retrieval with Tris-EDTA buffer (pH 9.0).



1X10<sup>6</sup> A431 cells were intracellularly stained with 0.5 ug Anti-Human Cytokeratin 10-specific (16855-1-AP) and CoraLite@488-Conjugated AffiniPure Goat Anti-Rabbit IgG(H+L) at dilution 1:1000 (green), and 0.5 ug Control Antibody. Cells were fixed with 90% MeOH .