

À des fins de recherche uniquement

# Anticorps Polyclonal de lapin anti-Cytokeratin 7-specific



Numéro de catalogue: 16857-1-AP

## Informations de base

|  |  |   |
|--|--|---|
| Numéro de catalogue:<br>16857-1-AP                       | Numéro d'acquisition GenBank:<br>NM_005556 | Méthode de purification:<br>Purification par affinité contre l'antigène |
| Taille:<br>150ul , Concentration: 800 µg/ml by Nanodrop; | Identification du gène (NCBI):<br>3855     | Dilutions recommandées:<br>WB 1:500-1:1000<br>IHC 1:400-1:1600          |
| Hôte:<br>Lapin   | Nom complet:<br>keratin 7                  |   |
| Isotype:<br>IgG  | MW calculé:<br>51 kDa                      |   |
|  | MW observés:<br>51 kDa                     |   |

## Applications

Applications testées:  
IHC, WB, ELISA

Spécificité de l'espèce:  
Humain, souris

**Remarque-IHC: il est suggéré de démasquer l'antigène avec un tampon de TE buffer pH 9.0; (\*) À défaut, 'le démasquage de l'antigène peut être 'effectué avec un tampon citrate pH 6,0.**

Contrôles positifs:

WB : cellules HepG2,

IHC : tissu de cancer du poumon humain, tissu de cancer du sein humain

## Informations générales

Keratins are a large family of proteins that form the intermediate filament cytoskeleton of epithelial cells, which are classified into two major sequence types. Type I keratins are a group of acidic intermediate filament proteins, including K9-K23, and the hair keratins Ha1-Ha8. Type II keratins are the basic or neutral counterparts to the acidic type I keratins, including K1-K8, and the hair keratins, Hb1-Hb6. KRT7, also named as cytokeratin 7, is one member of type II basic cytokeratin. It is specifically expressed in the simple epithelia lining the cavities of the internal organs and in the gland ducts and blood vessels, and their neoplasms. KRT7 is marker of epithelial tissues, but not present in carcinomas of stratified squamous cell origin. This antibody is specifically against KRT7.

## Stockage

Stockage:

Stocker à -20°C. Stable pendant un an après l'expédition.

Tampon de stockage:

PBS avec azoture de sodium à 0,02 % et glycérol à 50 % pH 7,3

L'aliquotage n'est pas nécessaire pour le stockage à -20C

\*\*\* Les 20ul contiennent 0,1% de BSA.

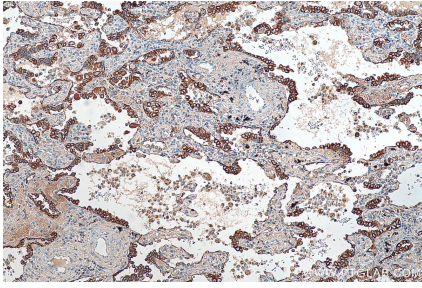
For technical support and original validation data for this product please contact:

T: 1 (888) 4PTGLAB (1-888-478-4522) (toll free in USA), or 1(312) 455-8498 (outside USA)

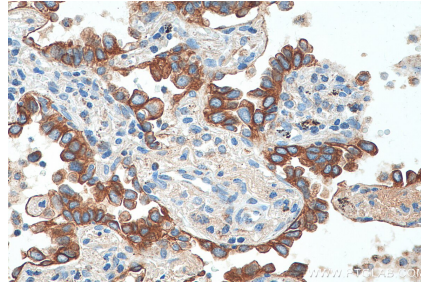
E: [proteintech@ptglab.com](mailto:proteintech@ptglab.com)  
W: [ptglab.com](http://ptglab.com)

This product is exclusively available under Proteintech Group brand and is not available to purchase from any other manufacturer.

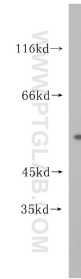
## Données de validation sélectionnées



Immunohistochemical analysis of paraffin-embedded human lung cancer tissue slide using 16857-1-AP (Cytokeratin 7-specific antibody) at dilution of 1:800 (under 10x lens). Heat mediated antigen retrieval with Tris-EDTA buffer (pH 9.0).



Immunohistochemical analysis of paraffin-embedded human lung cancer tissue slide using 16857-1-AP (Cytokeratin 7-specific antibody) at dilution of 1:800 (under 40x lens). Heat mediated antigen retrieval with Tris-EDTA buffer (pH 9.0).



HepG2 cells were subjected to SDS PAGE followed by western blot with 16857-1-AP (KRT7-specific antibody) at dilution of 1:500 incubated at room temperature for 1.5 hours.