

À des fins de recherche uniquement

# Anticorps Polyclonal de lapin anti-RAB27A-specific



Numéro de catalogue: 16868-1-AP

Phare

1 Publications

## Informations de base

Numéro de catalogue:  
16868-1-AP

Taille:  
150ul, Concentration: 133 µg/ml by  
Bradford method using BSA as the  
standard;

Hôte:  
Lapin

Isotype:  
IgG

Numéro d'acquisition GenBank:  
NM\_004580

Identification du gène (NCBI):  
5873

Nom complet:  
RAB27A, member RAS oncogene  
family

MW calculé

25 kDa

MW observés:

25 kDa

Méthode de purification:  
Purification par affinité contre  
l'antigène

Dilutions recommandées:  
WB 1:500-1:3000  
IHC 1:50-1:500

## Applications

Applications testées:  
IHC, WB, ELISA

Demandes citées:  
WB

Spécificité de l'espèce:  
Humain, rat

Espèces citées:  
souris

Contrôles positifs:

WB : cellules HL-60, cellules MG U-87, cellules PC-12

IHC : tissu de lymphome humain, tissu de cancer du  
foie humain

**Remarque-IHC: il est suggéré de démasquer  
l'antigène avec un tampon de TE buffer pH  
9,0; (\*) À défaut, le démasquage de  
l'antigène peut être effectué avec un  
tampon citrate pH 6,0.**

## Informations générales

Rab27A is a member of a large family of Ras-related small GTPases. The protein is membrane-bound and may be involved in protein transport and small GTPase mediated signal transduction. Recent studies suggest that Rab27A is associated with melanosomes in pigmented cells and regulates melanosome transport via its interaction with actin-based cellular motors such as myosin Va and myosin VIIa. RAB27A is also required for regulated secretion in cytotoxic T lymphocytes. Rab27A is implicated in several diseases, including Griscelli syndrome, choroideremia, and the Hermansky-Pudlak syndrome mouse model, gunmetal.

## Publications notables

Autrice	Pubmed ID	Journal	Application
Lay Thant	35932574	Biochem Biophys Res Commun	WB

## Stockage

Stockage:  
Stocker à -20°C. Stable pendant un an après l'expédition.

Tampon de stockage:  
PBS avec azoture de sodium à 0,02 % et glycérol à 50 % pH 7,3  
L'aliquotage n'est pas nécessaire pour le stockage à -20C

\*\*\* Les 20ul contiennent 0,1% de BSA.

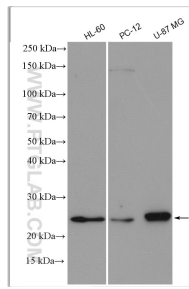
For technical support and original validation data for this product please contact:

T: 1 (888) 4PTGLAB (1-888-478-4522) (toll free  
in USA), or 1(312) 455-8498 (outside USA)

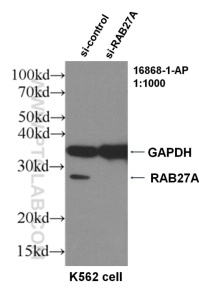
E: proteintech@ptglab.com  
W: ptglab.com

This product is exclusively available under Proteintech Group brand and is not available to purchase from any other manufacturer.

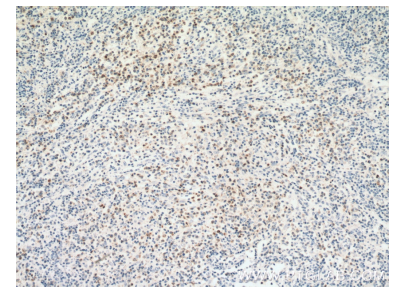
## Données de validation sélectionnées



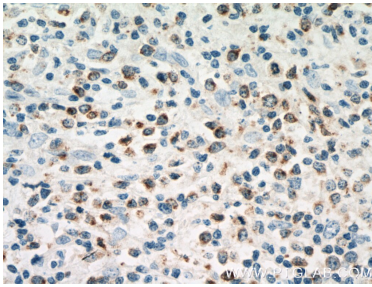
Various lysates were subjected to SDS PAGE followed by western blot with 16868-1-AP (RAB27A-specific antibody) at dilution of 1:1500 incubated at room temperature for 1.5 hours.



WB result of RAB27A antibody (16868-1-AP, 1:1000) with si-Control and si-RAB27A transfected K562 cells.



Immunohistochemical analysis of paraffin-embedded human lymphoma tissue slide using 16868-1-AP (RAB27A-specific antibody) at dilution of 1:200 (under 10x lens. Heat mediated antigen retrieval with Tris-EDTA buffer (pH 9.0).



Immunohistochemical analysis of paraffin-embedded human lymphoma tissue slide using 16868-1-AP (RAB27A-specific antibody) at dilution of 1:200 (under 40x lens. Heat mediated antigen retrieval with Tris-EDTA buffer (pH 9.0).