

À des fins de recherche uniquement

Anticorps Polyclonal de lapin anti-AMOT



Numéro de catalogue: 16870-1-AP

Phare

2 Publications

Informations de base

Numéro de catalogue:
16870-1-AP

Taille:
150ul, Concentration: 750 µg/ml by Nanodrop and 340 µg/ml by Bradford method using BSA as the standard;

Hôte:
Lapin

Isotype:
IgG

Numéro d'acquisition GenBank:
NM_001113490

Identification du gène (NCBI):

Nom complet:
angiomotin

MW calculé
118 kDa

MW observés:
130 kDa

Méthode de purification:
Purification par affinité contre l'antigène

Dilutions recommandées:
WB 1:500-1:1000

Applications

Applications testées:
WB, ELISA

Demandes citées:
IF, WB

Spécificité de l'espèce:
Humain, rat, souris

Espèces citées:
Humain, souris

Contrôles positifs:

WB : tissu d'estomac humain, cellules HEK-293

Informations générales

Angiomotin belongs to the motin family of angiotensin binding protein. The encoded protein is expressed predominantly in endothelial cells of capillaries as well as larger vessels of the placenta where it may mediate the inhibitory effect of angiotensin on tube formation and the migration of endothelial cells toward growth factors during the formation of new blood vessels. Most abundant expression was found in placenta and skeletal muscle. AMOT has two isoforms with MW 130 kDa (p130) and 80 kDa (p80). This antibody recognizes p130 only.

Publications notables

Autrice	Pubmed ID	Journal	Application
Jiajun Xiao	27875740	Int J Cardiol	WB, IF
Xue Zhang	34631281	Mol Ther Nucleic Acids	WB

Stockage

Stockage:

Stocker à -20°C. Stable pendant un an après l'expédition.

Tampon de stockage:

PBS avec azoture de sodium à 0,02 % et glycérol à 50 % pH 7,3

L'aliquotage n'est pas nécessaire pour le stockage à -20°C

*** Les 20ul contiennent 0,1% de BSA.

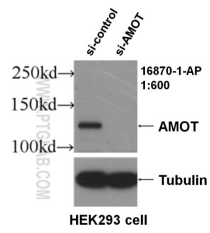
For technical support and original validation data for this product please contact:

T: 1 (888) 4PTGLAB (1-888-478-4522) (toll free in USA), or 1(312) 455-8498 (outside USA)

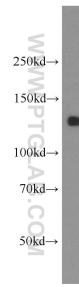
E: proteintech@ptglab.com
W: ptglab.com

This product is exclusively available under Proteintech Group brand and is not available to purchase from any other manufacturer.

Données de validation sélectionnées



WB result of AMOT antibody (16870-1-AP, 1:600) with si-Control and si-AMOT transfected HEK293 cells.



human stomach tissue were subjected to SDS PAGE followed by western blot with 16870-1-AP (AMOT antibody) at dilution of 1:500 incubated at room temperature for 1.5 hours.