

À des fins de recherche uniquement

Anticorps Polyclonal de lapin anti-IFIH1-Specific



Numéro de catalogue: 16879-1-AP

Informations de base

Numéro de catalogue: 16879-1-AP	Numéro d'acquisition GenBank: NM_022168	Méthode de purification: Purification par affinité contre l'antigène
Taille: 150ul , Concentration: 260 µg/ml by Nanodrop and 213 µg/ml by Bradford method using BSA as the standard;	Identification du gène (NCBI): 64135	Dilutions recommandées: WB 1:1000-1:4000
Hôte: Lapin	Nom complet: interferon induced with helicase C domain 1	
Isotype: IgG	MW calculé: 117 kDa	
	MW observés: 70 kDa, 90 kDa	

Applications

Applications testées: WB, ELISA	Contrôles positifs: WB : cellules HeLa, cellules Jurkat
Spécificité de l'espèce: Humain	

Informations générales

IFIH1 (Interferon-induced helicase C domain-containing protein 1) is a putative RNA helicase that is upregulated in response to treatment with IFNB or IFNB and MEZ. It is also named as MDA5 and RH116. Ectopic expression of MDA5 in melanoma cells resulted in reduced colony formation, suggesting an interaction of the CARD and apoptotic signal molecules. Functional analysis indicated that MDA5 is an RNA-dependent ATPase. IFIH1 has an apparent molecular mass of 117-130 kDa, and always other bands (70 kDa and 90 kDa) can be detected as cleaved products (PMID: 17267501). This antibody is specific to IFIH1.

Stockage

Stockage:
Stocker à -20°C. Stable pendant un an après l'expédition.
Tampon de stockage:
PBS avec azoture de sodium à 0,02 % et glycérol à 50 % pH 7,3
L'aliquotage n'est pas nécessaire pour le stockage à -20C

*** Les 20ul contiennent 0,1% de BSA.

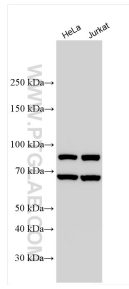
For technical support and original validation data for this product please contact:

T: 1 (888) 4PTGLAB (1-888-478-4522) (toll free in USA), or 1(312) 455-8498 (outside USA)

E: proteintech@ptglab.com
W: ptglab.com

This product is exclusively available under Proteintech Group brand and is not available to purchase from any other manufacturer.

Données de validation sélectionnées



Various lysates were subjected to SDS PAGE followed by western blot with 16879-1-AP (IFIH1-Specific antibody) at dilution of 1:2000 incubated at room temperature for 1.5 hours.