

À des fins de recherche uniquement

# Anticorps Polyclonal de lapin anti-ATAD1



Numéro de catalogue: 16882-1-AP

## Informations de base

Numéro de catalogue:  
16882-1-AP

Taille:  
150ul, Concentration: 200 µg/ml by  
Nanodrop and 173 µg/ml by Bradford  
method using BSA as the standard;

Hôte:  
Lapin

Isotype:  
IgG

Immunogen Catalog Number:  
AG10343

Numéro d'acquisition GenBank:  
BC010868

Identification du gène (NCBI):  
84896

Nom complet:  
ATPase family, AAA domain  
containing 1

MW calculé  
361 aa, 41 kDa

MW observés:  
32 kDa

Méthode de purification:  
Purification par affinité contre  
l'antigène

Dilutions recommandées:  
WB 1:500-1:2000  
IP 0.5-4.0 ug for IP and 1:500-1:2000  
for WB

## Applications

Applications testées:  
IP, WB, ELISA

Spécificité de l'espèce:  
Humain, rat, souris

Contrôles positifs:

WB : cellules HepG2, tissu cérébral de rat, tissu  
cérébral de souris

IP : tissu cérébral de souris,

## Informations générales

The mitochondrial AAA (ATPase Associated with diverse cellular Activities) protein ATAD1 (in humans; Msp1 in yeast) removes mislocalized membrane proteins, as well as stuck import substrates from the mitochondrial outer membrane, facilitating their re-insertion into their cognate organelles and maintaining mitochondria's protein import capacity.

## Stockage

Stockage:

Stocker à -20°C. Stable pendant un an après l'expédition.

Tampon de stockage:

PBS avec azoture de sodium à 0,02 % et glycérol à 50 % pH 7,3

L'aliquotage n'est pas nécessaire pour le stockage à -20C

\*\*\* Les 20ul contiennent 0,1% de BSA.

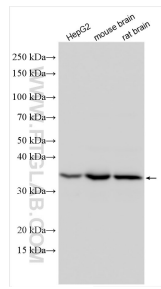
For technical support and original validation data for this product please contact:

T: 1 (888) 4PTGLAB (1-888-478-4522) (toll free  
in USA), or 1(312) 455-8498 (outside USA)

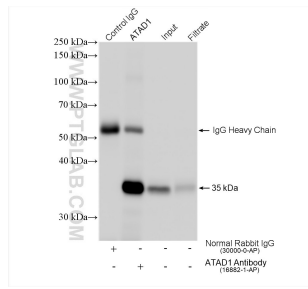
E: proteintech@ptglab.com  
W: ptglab.com

This product is exclusively available under Proteintech Group brand and is not available to purchase from any other manufacturer.

## Données de validation sélectionnées



Various lysates were subjected to SDS PAGE followed by western blot with 16882-1-AP (ATAD1 antibody) at dilution of 1:1000 incubated at room temperature for 1.5 hours.



IP result of anti-ATAD1(IP:16882-1-AP, 4ug; Detection:16882-1-AP 1:1000) with mouse brain tissue lysate 1280 ug.