

À des fins de recherche uniquement

Anticorps Polyclonal de lapin anti-SPAG16



Numéro de catalogue: 16883-1-AP

1 Publications

Informations de base

Numéro de catalogue:
16883-1-AP

Taille:
150ul, Concentration: 700 µg/ml by Nanodrop and 293 µg/ml by Bradford method using BSA as the standard;

Hôte:
Lapin

Isotype:
IgG

Immunogen Catalog Number:
AG10348

Numéro d'acquisition GenBank:
BC009614

Identification du gène (NCBI):
79582

Nom complet:
sperm associated antigen 16

MW calculé
631 aa, 71 kDa

MW observés:
71 kDa

Méthode de purification:
Purification par affinité contre l'antigène

Dilutions recommandées:
WB 1:500-1:2000
IP 0.5-4.0 ug for IP and 1:500-1:2000 for WB
IHC 1:20-1:200
IF 1:20-1:200

Applications

Applications testées:
IF, IHC, IP, WB, ELISA

Demandes citées:
WB

Spécificité de l'espèce:
Humain, rat, souris

Espèces citées:
Humain

Remarque-IHC: il est suggéré de démasquer l'antigène avec un tampon de TE buffer pH 9,0; (*) A défaut, le démasquage de l'antigène peut être effectué avec un tampon citrate pH 6,0.

Contrôles positifs:

WB : tissu testiculaire de rat, tissu testiculaire de souris

IP : tissu testiculaire de souris,

IHC : tissu cérébral humain,

IF : cellules HepG2,

Informations générales

SPAG16 (also known as PF20) is an orthologue of Chlamydomonas PF20, a component of the alga axoneme central apparatus that is required for flagellar motility. SPAG16 is highly expressed in the testis, low abundant or absent from other tissues. The SPAG16 gene encodes two major proteins, a 71-kDa SPAG16L and a smaller 35-kDa SPAG16S nuclear protein that represents the C-terminus of SPAG16L. SPAG16L was detected abundantly in the cytoplasm, while SPAG16S was detected in both cytoplasm and nucleus. This antibody was raised against the N-terminal region of SPAG16 and mainly recognizes SPAG16L.

Publications notables

Autrice	Pubmed ID	Journal	Application
Xing Guo	37001189	Ecotoxicol Environ Saf	WB

Stockage

Stockage:

Stocker à -20°C. Stable pendant un an après l'expédition.

Tampon de stockage:

PBS avec azoture de sodium à 0,02 % et glycérol à 50 % pH 7,3

L'aliquotage n'est pas nécessaire pour le stockage à -20C

*** Les 20ul contiennent 0,1% de BSA.

For technical support and original validation data for this product please contact:

T: 1 (888) 4PTGLAB (1-888-478-4522) (toll free in USA), or 1(312) 455-8498 (outside USA)

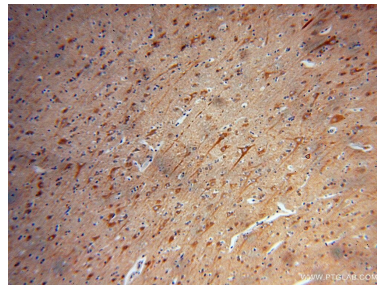
E: proteintech@ptglab.com
W: ptglab.com

This product is exclusively available under Proteintech Group brand and is not available to purchase from any other manufacturer.

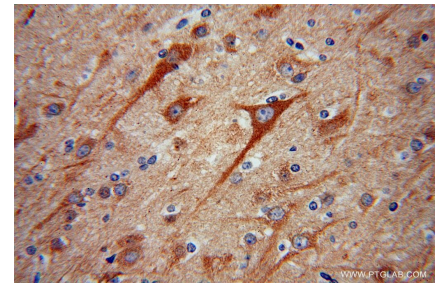
Données de validation sélectionnées



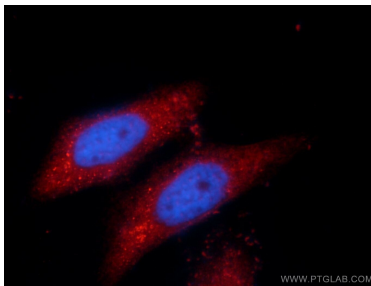
rat testis tissue were subjected to SDS PAGE followed by western blot with 16883-1-AP (SPAG16 antibody) at dilution of 1:1000 incubated at room temperature for 1.5 hours.



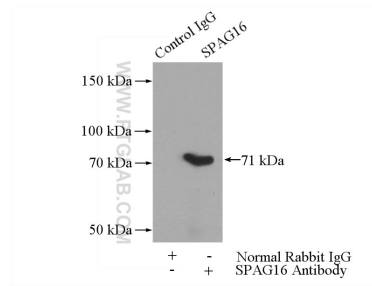
Immunohistochemical analysis of paraffin-embedded human brain using 16883-1-AP (SPAG16 antibody) at dilution of 1:100 (under 10x lens).



Immunohistochemical analysis of paraffin-embedded human brain using 16883-1-AP (SPAG16 antibody) at dilution of 1:100 (under 40x lens).



Immunofluorescent analysis of HepG2 cells, using SPAG16 antibody 16883-1-AP at 1:50 dilution and Rhodamine-labeled goat anti-rabbit IgG (red). Blue pseudocolor = DAPI (fluorescent DNA dye).



IP Result of anti-SPAG16 (IP:16883-1-AP, 4ug; Detection:16883-1-AP 1:1000) with mouse testis tissue lysate 4000ug.