

À des fins de recherche uniquement

Anticorps Polyclonal de lapin anti-RPGR



Numéro de catalogue: 16891-1-AP

2 Publications

Informations de base

Numéro de catalogue: 16891-1-AP	Numéro d'acquisition GenBank: BC031624	Méthode de purification: Purification par affinité contre l'antigène
Taille: 150ul , Concentration: 300 µg/ml by Nanodrop;	Identification du gène (NCBI): 6103	Dilutions recommandées: WB 1:500-1:1000 IHC 1:50-1:500 IF 1:10-1:100
Hôte: Lapin	Nom complet: retinitis pigmentosa GTPase regulator	
Isotype: IgG	MW calculé: 113 kDa	
Immunogen Catalog Number: AG10405	MW observés: 100-105 kDa, 70 kDa	

Applications

Applications testées:

IF, IHC, WB, ELISA

Demandes citées:

WB

Spécificité de l'espèce:

Humain, souris

Espèces citées:

Humain

Contrôles positifs:

WB : tissu oculaire de souris, cellules SH-SY5Y, cellules Y79, tissu hépatique de souris, tissu rétinien de souris

IHC : tissu oculaire de souris, tissu cardiaque humain, tissu rénal humain

IF : cellules hTERT-RPE1,

Remarque-IHC: il est suggéré de démasquer l'antigène avec un tampon de TE buffer pH 9,0; (*) À défaut, 'le démasquage de l'antigène peut être effectué avec un tampon citrate pH 6,0.

Informations générales

RPGR is a protein with a series of six RCC1-like domains (RLDs), characteristic of the highly conserved guanine nucleotide exchange factors. The encoded protein is found in the Golgi body and interacts with RPGRIP1. This protein localizes to the outer segment of rod photoreceptors and is essential for their viability. Mutations in this gene have been associated with X-linked retinitis pigmentosa (XLRP). Multiple alternatively spliced transcript variants that encode different isoforms of this gene have been reported, but the full-length nature of only some have been determined. This antibody can recognize all the isoforms of RPGR.

Publications notables

Autrice	Pubmed ID	Journal	Application
Dario Cilleros-Rodriguez	36063381	Elife	WB
Fidelle Chahine Karam	35330501	J Pers Med	WB

Stockage

Stockage:

Stocker à -20°C. Stable pendant un an après l'expédition.

Tampon de stockage:

PBS avec azoture de sodium à 0,02 % et glycérol à 50 % pH 7,3

L'aliquotage n'est pas nécessaire pour le stockage à -20C

*** Les 20ul contiennent 0,1% de BSA.

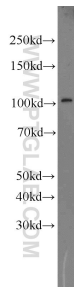
For technical support and original validation data for this product please contact:

T: 1 (888) 4PTGLAB (1-888-478-4522) (toll free in USA), or 1(312) 455-8498 (outside USA)

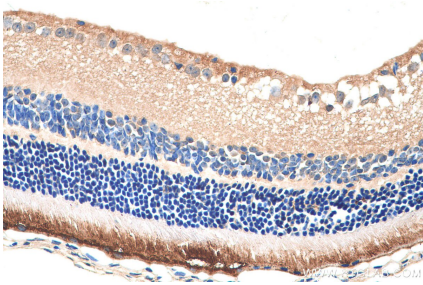
E: proteintech@ptglab.com
W: ptglab.com

This product is exclusively available under Proteintech Group brand and is not available to purchase from any other manufacturer.

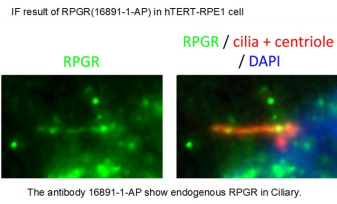
Données de validation sélectionnées



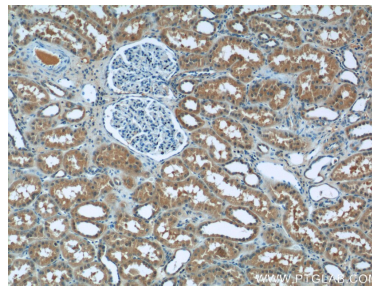
mouse eye tissue were subjected to SDS PAGE followed by western blot with 16891-1-AP (RPGR antibody) at dilution of 1:500 incubated at room temperature for 1.5 hours.



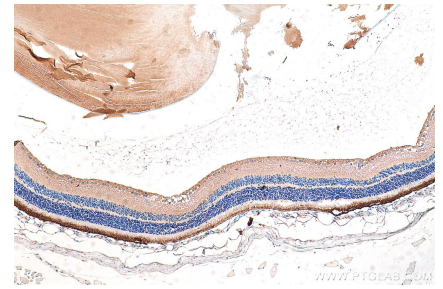
Immunohistochemical analysis of paraffin-embedded mouse eye tissue slide using 16891-1-AP (RPGR antibody) at dilution of 1:200 (under 40x lens). Heat mediated antigen retrieval with Tris-EDTA buffer (pH 9.0).



IF result of anti-RPGR (16891-1-AP) in hTERT-RPE1 cell by Dr. Seongjin Seo.



Immunohistochemical analysis of paraffin-embedded human kidney tissue slide using 16891-1-AP (RPGR Antibody) at dilution of 1:50 (under 10x lens).



Immunohistochemical analysis of paraffin-embedded mouse eye tissue slide using 16891-1-AP (RPGR antibody) at dilution of 1:200 (under 10x lens). Heat mediated antigen retrieval with Tris-EDTA buffer (pH 9.0).