

À des fins de recherche uniquement

Anticorps Polyclonal de lapin anti-GPT/ ALT1



Numéro de catalogue: 16897-1-AP

8 Publications

Informations de base

Numéro de catalogue:
16897-1-AP

Taille:
150ul , Concentration: 400 µg/ml by Nanodrop and 266 µg/ml by Bradford method using BSA as the standard;

Hôte:
Lapin

Isotype:
IgG

Immunogen Catalog Number:
AG10424

Numéro d'acquisition GenBank:
BC018207

Identification du gène (NCBI):
2875

Nom complet:
glutamic-pyruvate transaminase (alanine aminotransferase)

MW calculé
496 aa, 55 kDa

MW observés:
50-55 kDa

Méthode de purification:
Purification par affinité contre l'antigène

Dilutions recommandées:
WB 1:500-1:2000
IP 0.5-4.0 ug for IP and 1:500-1:1000 for WB

Applications

Applications testées:
IP, WB, ELISA

Demandes citées:
WB

Spécificité de l'espèce:
Humain, rat, souris

Espèces citées:
Humain, souris

Contrôles positifs:

WB : tissu hépatique de souris, tissu hépatique de rat

IP : cellules L02,

Informations générales

GPT, also known as ALT1 (glutamate-pyruvate transaminase 1), catalyzes the reversible transamination between alanine and 2-oxoglutarate to generate pyruvate and glutamate and, therefore, plays a key role in the intermediary metabolism of glucose and amino acids. Serum activity levels of this enzyme are routinely used as a biomarker of liver injury caused by drug toxicity, infection, alcohol, and steatosis. A related gene on chromosome 16 encodes a putative mitochondrial alanine aminotransaminase.

Publications notables

Autrice	Pubmed ID	Journal	Application
Weiwei Dai	36256480	J Clin Invest	WB
Shizhen Qin	27575953	J Proteome Res	WB
Shuaiwei Wang	33293898	Mediators Inflamm	WB

Stockage

Stockage:

Stocker à -20°C. Stable pendant un an après l'expédition.

Tampon de stockage:

PBS avec azoture de sodium à 0,02 % et glycérol à 50 % pH 7,3

L'aliquotage n'est pas nécessaire pour le stockage à -20C

*** Les 20ul contiennent 0,1% de BSA.

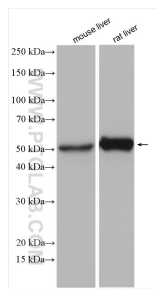
For technical support and original validation data for this product please contact:

T: 1 (888) 4PTGLAB (1-888-478-4522) (toll free in USA), or 1(312) 455-8498 (outside USA)

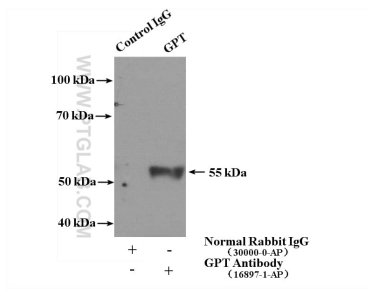
E: proteintech@ptglab.com
W: ptglab.com

This product is exclusively available under Proteintech Group brand and is not available to purchase from any other manufacturer.

Données de validation sélectionnées



Various lysates were subjected to SDS PAGE followed by western blot with 16897-1-AP (GPT antibody) at dilution of 1:1000 incubated at room temperature for 1.5 hours.



IP Result of anti-GPT (IP:16897-1-AP, 4ug; Detection:16897-1-AP 1:500) with L02 cells lysate 1800ug.