

À des fins de recherche uniquement

# Anticorps Polyclonal de lapin anti-PROS1



Numéro de catalogue: 16910-1-AP

9 Publications

## Informations de base

Numéro de catalogue:

16910-1-AP

Taille:

150ul, Concentration: 400 µg/ml by Nanodrop;

Hôte:

Lapin

Isotype:

IgG

Immunogen Catalog Number:

AG10539

Numéro d'acquisition GenBank:

BC015801

Identification du gène (NCBI):

5627

Nom complet:

protein S (alpha)

MW calculé

75 kDa

MW observés:

70 kDa

Méthode de purification:

Purification par affinité contre l'antigène

Dilutions recommandées:

WB 1:500-1:1000

IHC 1:20-1:200

IF 1:50-1:500

## Applications

Applications testées:

FC, IF, IHC, WB, ELISA

Demandes citées:

FC, IF, IHC, WB

Spécificité de l'espèce:

Humain, souris

Espèces citées:

Humain, souris, Plasmodium falciparum

**Remarque-IHC: il est suggéré de démasquer l'antigène avec un tampon de TE buffer pH 9,0; (\*) À défaut, le démasquage de l'antigène peut être effectué avec un tampon citrate pH 6,0.**

Contrôles positifs:

WB : tissu placentaire humain, cellules DU 145, cellules HepG2, cellules HuH-7, tissu placentaire de souris

IHC : tissu hépatique humain,

IF : cellules HepG2,

## Informations générales

PROS1, also named as Vitamin K-dependent protein S, is a 676 amino acid protein, which contains 4 EGF-like domains, contains one Gla (gamma-carboxy-glutamate) domain and contains 2 laminin G-like domains. PROS1 as a secreted protein platelets alpha granules is expressed in plasma. PROS1 is a cofactor to activated protein C in the degradation of coagulation factors Va and VIIIa and helps to prevent coagulation and stimulating fibrinolysis.

## Publications notables

Autrice	Pubmed ID	Journal	Application
Zhao-Hui Wang	25997409	Mol Med Rep	IF
Tang Liang L	23813890	Am J Hematol	WB,IF
Weiyu Xu	31956102	Aging (Albany NY)	WB,IHC

## Stockage

Stockage:

Stocker à -20°C. Stable pendant un an après l'expédition.

Tampon de stockage:

PBS avec azoture de sodium à 0,02 % et glycérol à 50 % pH 7,3

L'aliquotage n'est pas nécessaire pour le stockage à -20C

\*\*\* Les 20ul contiennent 0,1% de BSA.

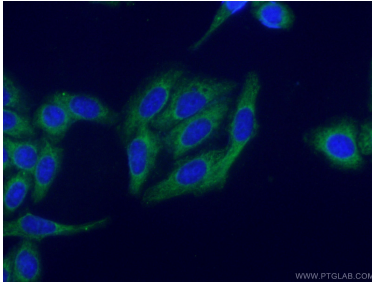
For technical support and original validation data for this product please contact:

T: 1 (888) 4PTGLAB (1-888-478-4522) (toll free in USA), or 1(312) 455-8498 (outside USA)

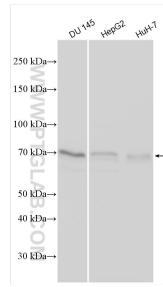
E: proteintech@ptglab.com  
W: ptglab.com

This product is exclusively available under Proteintech Group brand and is not available to purchase from any other manufacturer.

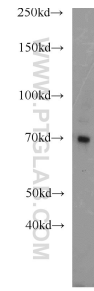
## Données de validation sélectionnées



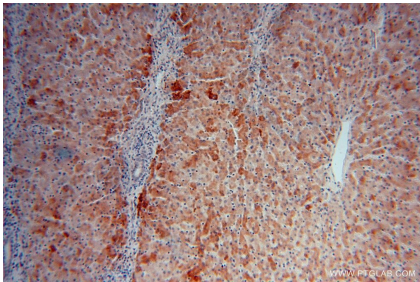
Immunofluorescent analysis of (-20°C Ethanol) fixed HepG2 cells using 16910-1-AP (PROS1 antibody) at dilution of 1:50 and Alexa Fluor 488-conjugated AffiniPure Goat Anti-Rabbit IgG(H+L).



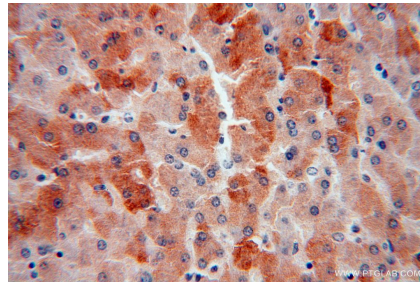
Various lysates were subjected to SDS PAGE followed by western blot with 16910-1-AP (PROS1 antibody) at dilution of 1:3000 incubated at room temperature for 1.5 hours.



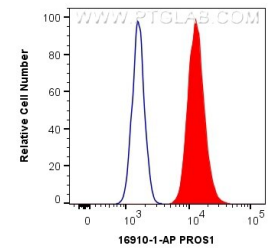
human placenta tissue were subjected to SDS PAGE followed by western blot with 16910-1-AP (PROS1 antibody) at dilution of 1:1000 incubated at room temperature for 1.5 hours.



Immunohistochemical analysis of paraffin-embedded human liver using 16910-1-AP (PROS1 antibody) at dilution of 1:100 (under 10x lens).



Immunohistochemical analysis of paraffin-embedded human liver using 16910-1-AP (PROS1 antibody) at dilution of 1:100 (under 40x lens).



$1 \times 10^6$  HepG2 cells were intracellularly stained with 0.4 ug Anti-Human PROS1 (16910-1-AP) and CoraLite®488-Conjugated AffiniPure Goat Anti-Rabbit IgG(H+L) at dilution 1:1000 (red), or 0.4 ug Isotype Control. Cells were fixed with 4% PFA and permeabilized with Flow Cytometry Perm Buffer (PF00011-C).