

À des fins de recherche uniquement

# Anticorps Polyclonal de lapin anti-HLA-G



Numéro de catalogue: 16913-1-AP

3 Publications

## Informations de base

<b>Numéro de catalogue:</b> 16913-1-AP	<b>Numéro d'acquisition GenBank:</b> BC021708	<b>Méthode de purification:</b> Purification par affinité contre l'antigène
<b>Taille:</b> 150ul, Concentration: 300 µg/ml by Nanodrop and 267 µg/ml by Bradford method using BSA as the standard;	<b>Identification du gène (NCBI):</b> 3135	<b>Dilutions recommandées:</b> WB 1:1000-1:4000
<b>Hôte:</b> Lapin	<b>Nom complet:</b> major histocompatibility complex, class I, G	
<b>Isotype:</b> IgG	<b>MW calculé:</b> 338 aa, 38 kDa	
<b>Immunogen Catalog Number:</b> AG10577	<b>MW observés:</b> 33-45 kDa	

## Applications

<b>Applications testées:</b> WB, ELISA	<b>Contrôles positifs:</b> WB : tissu placentaire humain,
<b>Demandes citées:</b> IHC, WB	
<b>Spécificité de l'espèce:</b> Humain	
<b>Espèces citées:</b> Humain	

## Informations générales

Human major histocompatibility complex (MHC) antigens, also referred to as human leukocyte antigens (HLA), are encoded by genes located on the short arm of chromosome 6 (6p21.3). HLA-G is a non-classical MHC class I molecule with multiple immunoregulatory properties. HLA-G exhibits a restricted pattern of expression that includes placental extravillous trophoblasts at the maternal-fetal interface, where it abolishes maternal immune cell activity against fetus and establishes immune tolerance. Aberrant expression of HLA-G has been found in a variety of human neoplastic diseases. It plays an important role in the escape of tumor cells from immunosurveillance.

## Publications notables

Autrice	Pubmed ID	Journal	Application
Zhi Chen	34105233	Aging Cell	IHC
Xinyuan Cui	31889361	Cell Prolif	WB
Jiayu Wang	34489969	Front Immunol	IHC

## Stockage

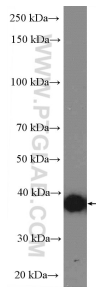
**Stockage:**  
Stocker à -20°C. Stable pendant un an après l'expédition.  
**Tampon de stockage:**  
PBS avec azoture de sodium à 0,02 % et glycérol à 50 % pH 7,3  
L'aliquotage n'est pas nécessaire pour le stockage à -20C

\*\*\* Les 20ul contiennent 0,1% de BSA.

For technical support and original validation data for this product please contact:  
T: 1 (888) 4PTGLAB (1-888-478-4522) (toll free in USA), or 1(312) 455-8498 (outside USA)  
E: proteintech@ptglab.com  
W: ptglab.com

This product is exclusively available under Proteintech Group brand and is not available to purchase from any other manufacturer.

## Données de validation sélectionnées



human placenta tissue were subjected to SDS PAGE followed by western blot with 16913-1-AP (HLA-G Antibody) at dilution of 1:2000 incubated at room temperature for 1.5 hours.