

À des fins de recherche uniquement

# Anticorps Polyclonal de lapin anti-C1qB



Numéro de catalogue: 16919-1-AP

3 Publications

## Informations de base

Numéro de catalogue:

16919-1-AP

Taille:

150ul, Concentration: 600 µg/ml by Nanodrop and 333 µg/ml by Bradford method using BSA as the standard;

Hôte:

Lapin

Isotype:

IgG

Immunogen Catalog Number:

AG10225

Numéro d'acquisition GenBank:

BC008983

Identification du gène (NCBI):

713

Nom complet:

complement component 1, q subcomponent, B chain

MW calculé

253 aa, 27 kDa

MW observés:

30 kDa

Méthode de purification:

Purification par affinité contre l'antigène

Dilutions recommandées:

WB 1:500-1:2000

## Applications

Applications testées:

WB, ELISA

Demandes citées:

WB

Spécificité de l'espèce:

Humain

Espèces citées:

Humain

Contrôles positifs:

WB : tissu plasmatique humain,

## Informations générales

The first component of complement, C1, is a calcium-dependent complex of the 3 subcomponents C1q, C1r, and C1s. C1q is composed of 18 polypeptide chains: six A-chains, six B-chains, and six C-chains. Each chain contains a collagen-like region located near the N terminus and a C-terminal globular region. Deficiency of C1q has been associated with lupus erythematosus and glomerulonephritis. This antibody is raised against C1qB which is the B-chain polypeptide of human complement subcomponent C1q.

## Publications notables

Autrice	Pubmed ID	Journal	Application
Hanji Huang	33707956	Onco Targets Ther	WB
Wei Dong	36471393	World J Surg Oncol	WB
Anika Alberts	32286427	Sci Rep	WB

## Stockage

Stockage:

Stocker à -20°C. Stable pendant un an après l'expédition.

Tampon de stockage:

PBS avec azoture de sodium à 0,02 % et glycérol à 50 % pH 7,3

L'aliquotage n'est pas nécessaire pour le stockage à -20C

\*\*\* Les 20ul contiennent 0,1% de BSA.

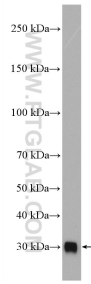
For technical support and original validation data for this product please contact:

T: 1 (888) 4PTGLAB (1-888-478-4522) (toll free in USA), or 1(312) 455-8498 (outside USA)

E: [proteintech@ptglab.com](mailto:proteintech@ptglab.com)  
W: [ptglab.com](http://ptglab.com)

This product is exclusively available under Proteintech Group brand and is not available to purchase from any other manufacturer.

## Données de validation sélectionnées



human plasma were subjected to SDS PAGE followed by western blot with 16919-1-AP (C1qB antibody) at dilution of 1:1000 incubated at room temperature for 1.5 hours.