

À des fins de recherche uniquement

Anticorps Polyclonal de lapin anti-Kir6.2



Numéro de catalogue: 16920-1-AP

1 Publications

Informations de base

Numéro de catalogue: 16920-1-AP	Numéro d'acquisition GenBank: BC064497	Méthode de purification: Purification par affinité contre l'antigène
Taille: 150ul , Concentration: 500 µg/ml by Nanodrop;	Identification du gène (NCBI): 3767	Dilutions recommandées: WB 1:200-1:1000
Hôte: Lapin	Nom complet: potassium inwardly-rectifying channel, subfamily J, member 11	
Isotype: IgG	MW calculé 390 aa, 44 kDa	
Immunogen Catalog Number: AG10262	MW observés: 48 kDa	

Applications

Applications testées:
WB, ELISA

Spécificité de l'espèce:
Humain, rat, souris

Contrôles positifs:

WB : tissu cardiaque de rat, cellules HepG2, tissu cardiaque humain, tissu de muscle squelettique de rat

Informations générales

Kir6.2 (also known as BIR or IKATP), encoded by the KCNJ11 gene, is the pore-forming unit of the ATP-sensitive K⁺ channel, an inward-rectifier potassium ion channel. Kir6.2 is controlled by G-proteins and is found associated with the sulfonylurea receptor (SUR) to constitute the ATP-sensitive K⁺ channel. The KCNJ11 gene is located at 11p15.1 and has no intron. Mutations in KCNJ11 are a cause of familial PPH1, an autosomal recessive disorder characterized by unregulated ins secretion. Defects in KCNJ11 may also contribute to autosomal dominant non-ins-dependent diabetes mellitus type II (NIDDM), transient neonatal diabetes mellitus type 3 (TNDM3), and permanent neonatal diabetes mellitus (PNDM).

Publications notables

Autrice	Pubmed ID	Journal	Application
Andrei N Tsentsevitsky	36302500	Life Sci	

Stockage

Stockage:
Stocker à -20°C. Stable pendant un an après l'expédition.
Tampon de stockage:
PBS avec azoture de sodium à 0,02 % et glycérol à 50 % pH 7,3
L'aliquotage n'est pas nécessaire pour le stockage à -20C

*** Les 20ul contiennent 0,1% de BSA.

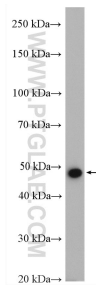
For technical support and original validation data for this product please contact:

T: 1 (888) 4PTGLAB (1-888-478-4522) (toll free in USA), or 1(312) 455-8498 (outside USA)

E: proteintech@ptglab.com
W: ptglab.com

This product is exclusively available under Proteintech Group brand and is not available to purchase from any other manufacturer.

Données de validation sélectionnées



rat heart tissue were subjected to SDS PAGE followed by western blot with 16920-1-AP (Kir6.2 antibody) at dilution of 1:300 incubated at room temperature for 1.5 hours.